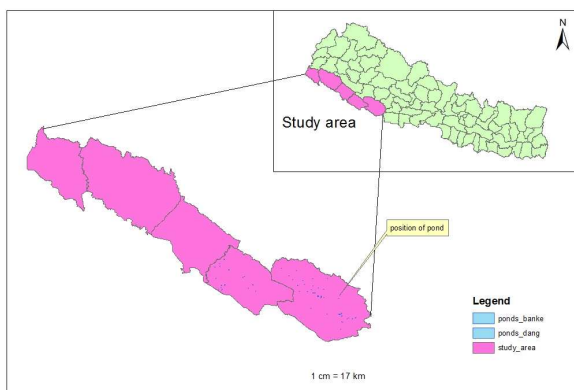




GOVERNMENT OF NEPAL
MINISTRY OF AGRICULTURAL DEVELOPMENT
DEPARTMENT OF AGRICULTURE
DIRECTORATE OF FISHERIES DEVELOPMENT
BALAJU, KATHMANDU



**FINAL REPORT
ON
“Detailed Survey and Digital Data Update
of all The Ponds of Five Selected Districts of
Terai Region of Nepal”**



2017

Submitted by the

Regd. No.:123878/70/071

PAN: 601888878



स्मार्ट इन्जिनियरीङ एण्ड डिजाईन सोलुसन प्राइवेट लिमिटेड
Smart Engineering & Design Solution Pvt. Ltd.(SEDS)

TABLE OF CONTENTS

TABLE OF CONTENTS.....	i
LIST OF FIGURES.....	ii
ABBREVIATIONS	iii
ACKNOWLEDGEMENT	iv
1. Introduction	5
1.1 Background	5
1.2 Objectives.....	6
1.3 Scope of the work	6
2. Methodology.....	7
2.1 Pre-Field Study	7
2.2 Field Study.....	9
2.3 Post Field Activities	11
3. Existing Baseline Information	12
4. Conclusion.....	21

LIST OF FIGURES

Figure 1: Flow chart of the study.....	8
Figure 2: GPS survey at the pond	10
Figure 3: Some pictures of pond in dang	11
Figure 4: Location of study area	12
Figure 5 Distribution of pond in study area.....	13
Figure 6: Distribution of pond in Dang District	13
Figure 7Distribution of pond in Dang District.....	14
Figure 8Distribution of pond in Banke District	14
Figure 9: Distribution of pond in Banke District	15
Figure 10Distribution of pond in Bardiya	15
Figure 11 : Distribution of pond in Bardiya.....	16
Figure 12 Distribution of ponds in Kailali	16
Figure 13: Distribution of pond in Kanchanpur	17
Figure 14: View from google earth showing entity of pond in Bardiya	17
Figure 15: View from google earth (Ponds in Bardiya)	18
Figure 16: View from google earth.....	18
Figure 17 Overall Distribution of Pond in the Study Ar.....	19

ABBREVIATIONS

CBEWS	Community Based Early Warning System
CBO	Community Based Organization
CBS	Central Bureau of Statistics
CFGORRP	Community Based Flood and Glacial Lake Outburst Risk Reduction Project
DDC	District Development Committee
DDP	District Disaster Plan
DEM	Digital Elevation Model
DHM	Department of Hydrology and Meteorology
DoF	Department of Forest
DoR	Department of Road
DRC	Disaster Response Committee
DSCO	Department of Soil Conservation Office
DSCWM	Department of Soil Conservation and Watershed Management
DWIDP	Department of Water Induced Disaster Program
FGD	Focus Group Discussion
F.Y	Fiscal Year
GEF	Global Environment Facility
GIS	Geographic Information System
GLOF	Glacier Lake Outburst Flooding
GoN	Government of Nepal
GS/	Gender and Social Inclusion
GTZ	German International
HZC	Heavy Zinc Coated
DOFD	Directorate of Fisheries Development
I/NGOs	Inter/National Governmental Organization
KII	Key Informant Interview
LA	Launching Apron
NCDAF	Nepal Community Development and Advocacy Forum (Mahottari)
NRCS	Nepal Red Cross Society
PRA	Participatory Rural Appraisal
RBM	River Bed Material
TOR	Terms of Reference
VDC	Village Development Committee
WECS	Water and Energy Commission Secretariat
SEDS	Smart Engineering & Design Solution Pvt. Ltd

ACKNOWLEDGEMENT

Smart Engineering and Design Solution Pvt. Ltd would like to express our sincere gratitude to the Directorate of Fisheries Development, for entrusting the responsibility of conducting the **“Detailed Survey and Digital Data Update of all the Pond of Five Selected Districts of Terai Region of Nepal”**.

We are also very grateful to Programme Directore, Mr. Baikuntha Adhikari, including all the staff of the DOFD and staff of DADO and FDC who spent their valuable time with the study team in giving their responses and have provided us immense help and cooperation during the site visit.

Finally, we are very grateful and offer our sincere appreciation to all the members who were involved in this project and have helped us in one way or another through their kind co-operation and active participation while preparing this report.

Consultant

Smart Engineering and Design Solution Pvt.Ltd
New Baneshwor, Kathmandu

1. Introduction

1.1 Background

Fish farming in Nepal is considered as one of the ancient farming system, there are lots of small scale fish farms in different villages in plain region started years ago. It provides many profitable opportunities; farmers are raising and selling fish on commercial basis. Our fish farms are sustainable and environment friendly fishes are raised in controlled system. There are more than 800,000 ha. of fresh water resources which can be utilized for fish farming. Commercial fish farming in natural water bodies is an emerging issue but it requires technical knowledge and great care to avoid biodiversity loss from natural environment.

Fish are an important source of food for people around the world, either caught wild or farmed. In recent days consumption of fish products in Nepal is increasing because of increasing health consciousness among the people. Fish is a healthy food because of the presence of protein, vitamins and minerals. In Nepal farmers have started using modern technology and raise both warm and cold-water species like Common carp, Grass carp, Silver carp, Big head carp, Rohu, Naini, Bhakur, Pangasius and trout.

Catching fish from natural water resources started long before, since the age of hunting. On the context of Nepal there are some professional ethnic groups who catch fish from natural water resources and sell in market to generate food and income to survive. The formal type of fish farming for economical purpose began in Nepal from 1947 when Agricultural Council of Nepal established a small unit to introduce fish culture in Nepal. In 1956 Fisheries section was created to introduce Fisheries Development Programme. In 1955-1966 about 6 government farms were established in the country. In 1947 the fingerlings of Indian major carps were introduced in the Water of Terai but could not be reared in hills. Therefore, exotic breeds like Common carp, Grass carp, Silver Carp and trout were introduced.

In Nepal it is considered as a profitable, occupation and reliable source of income. In Nepal the climate and nature of soil is also suitable for the construction of fish ponds in different parts of the country. As far as natural resources are concerned, Nepal has 3 main rivers i.e. Koshi, Gandaki and Karnali where many types of fishes are found. There are also many tributaries of these rivers where fishing is done. Also, there are many lakes in Nepal like Fewa, Rupa, Begnas, Rara where rich fish fauna is found. In Nepal there are about 230 species of fishes that which enrich the country in biodiversity.

Directorate of Fisheries Development is the leading government organization for the development of fisheries sector. The trend of the fish farming is growing nowadays and there are many fish ponds especially in the Terai region for the warm water species and raceways in hilly area for cold water species.

The systematic database for the existing ponds throughout the country has not been prepared yet, however this is the prime requirement for the planning and implementation of aquaculture activities. Therefore Directorate of Fisheries Development is dedicated to develop the database of the existing ponds.

The contract was signed between DOFD (hereinafter referred as client) and SEDC (hereinafter referred as consultant) to carry out work as per the Proposal and Terms of Reference (ToR).

The consultant has completed all the assigned work as mentioned in the TOR which includes

- Submission of inception report
- Field work
- Preparation and submission of draft and final Report

1.2 Objectives

The main objective of this task is to undertake a **“Detailed Survey and Digital Data Update of all the Pond of Five Selected Districts of Terai Region of Nepal”**.

- Undertake a detail study, survey and update the baseline database on current status of all the existing pond
- Based on the outcomes of surveys and GIS mapping, critically analyze the present existing fish culture pond and lakes.
- Develop a computerized GIS (ideally using the ESRI Arc suite of software)
 - Base-line data at appropriate scales, upon which DOFD and decision makers can make sound, accurate and timely decisions;
 - Available data, to quantify changing elements in the landscape, particularly vegetation, land use and population datasets.
 And
- Begin spatial analysis of the data collected, including interpretation of any available up-to-date digital satellite images.
- Carry out the location of all the pond suited in the five selected districts of Terai

To carry out the detailed GPS survey and prepare geo data base and update the digital data in the format of geo data base (i.e, .shp, .gdb, .dbf etc. file extension).

1.3 Scope of the work

The scope of the work are listed below

- Conduct detail survey of the five-selected district’s pond and natural lakes with GPS
- Verify and triangulate the available information on field/site with District Agricultural office, Fisheries Development Center, and Directorate of Fisheries Development Office.
- Develop required methodology and tools for survey, digital data update.
- Manage all required human resources, survey equipment and tools to complete the assigned task.
- Provide complete “Detail Survey, and digital data update through GIS” report with survey and digital data update.

2. Methodology

The study work has been grouped in the following major four steps:

- Project Start up Activities leading to Team Mobilization
- Pre-field study leading to Inception Report
- Fieldwork and Other Activities leading to Field Report
- Post Field Activities leading to Draft Report and Final Report

Flow Chart showing Major Tasks/Activities with deliverables is presented in Figure 1. The respective activities to be carried out in each step, are described in the following sections:

2.1 Pre-Field Study

The activities/tasks that were planned and that needed to be carried out during the pre-field study are described herein in the subsequent sections.

Collection of Reports, Maps and Review

All the relevant reports, available hardcopy and digital maps, data have been acquired. The maps include recently published topographic maps, geological maps, land utilization maps, land classification maps, soil maps, and other relevant thematic maps of the study area. The collected maps have been studied by the study team and collated them with respect to the study objectives, scope of works, and final deliverables. Relevant literatures in the internet, local libraries, government institutions (DOFD, DHM, DSCO), ICIMOD on “Detailed Survey and Digital Data Update of all the pond of five selected district of Terai region of Nepal” has been reviewed in the context of the study framework and desired output.

Collection of Baseline Information

Through the secondary sources and GIS works, baseline information was collected /generated for the five districts in terai region.

Preparation of GIS Maps

Preparation of administrative boundary map, basin delineation map, land use map, slope map study area etc. using GIS software (Arc GIS 9.3, Arc view). We used topo data provided by Department of Survey. Then DEM was prepared by 30X30 m cell size using interpolation from the point elevation data and topo layers obtained from Department of Survey.

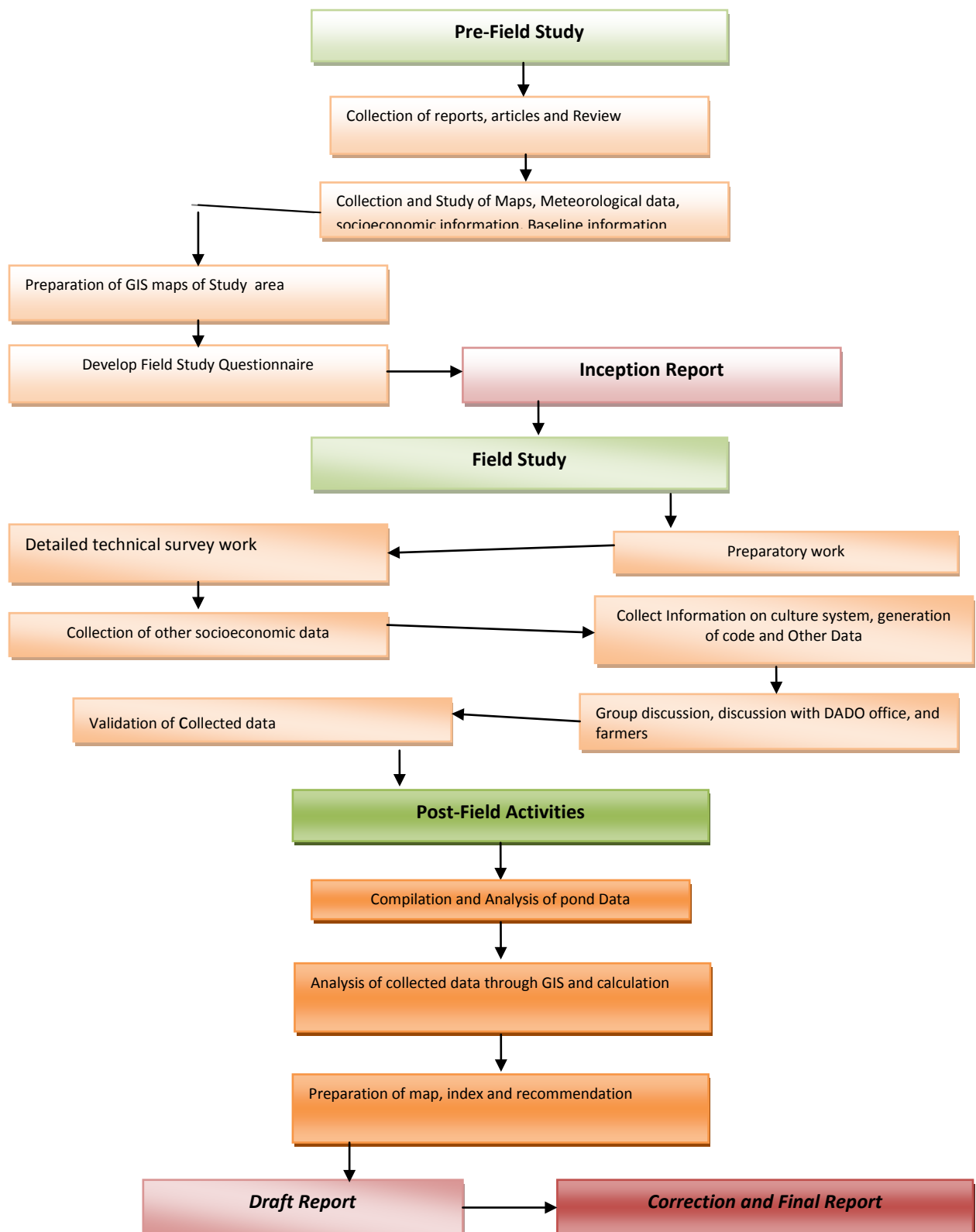


Figure 1: Flow chart of the study

Preparation of Questionnaire

Questionnaire for field survey was prepared during the inception phase to cover necessary information of the pond and system.

District	B	Name of Farmer	A	x	Code no.	y	Culture System			Ownership of pond		Z
							Carp	Pangsasis	Others	I	II	
Dang					56-01-09-01 (district-vdc/municipality-ward no-pond number)							

X: GPS Mark point

Y: GPS saved track Name

Z: Average Depth of pond

A: Photo Number

B: VDC/Municipality

I: Personal

II: Government

2.2 Field Study

Preparatory Work

After the desk study and central level works, the Consultant's team proceeded to the field. The team had visited government organizations (DADO, FDC, DDC, VDC) in the districts along with the field works.

Data Collection

Data of location of pond, their culture system, shape area, perimeter, and farmer's information were collected from field.

The collection of field data and information was done through field survey, GPS tracking and marking consultative meetings with VDCs, local government authorities, development partners to generate information on pond. Interviews, and interaction with the concerning stakeholders like individuals, done. The Field Questionnaire, Checklist and information/observation sheet developed, photographs were used to collect data/information, which will basically cover;

- Location of pond.
- Generation of code.
- Culture system.
- Depth of pond, farmers information,
- Information related to fish farming

Survey

A detailed survey was made in all the reachable pond through GPS marking and tracking.



Figure 2: GPS survey at the pond

Key Informant Interview (KII)

A checklist was prepared for collection of information from the relevant key informants. This helped in collection of the information with regards to perception of people towards the fish farming. Key personnel like old age people, social leaders, Secretary of VDCs, officials from DADO were considered.





Figure 3: Some pictures of pond in dang

2.3 Post Field Activities

Compilation and Analysis of GPS data

The data obtained during field survey were collected and compiled. The preparation of excel table filling the necessary data with GPS tracks is done.

Analysis through GIS environment

Based on the field survey and correlating the coordinate system of GPS data with topo sheet data generation of shape file is done. After that attribute table were filled in the shape file according to the information acquired. Calculation of area and perimeter is done on shape file. KML file were generate based on the shape file. After that geo-data base is generated.

Validation of the Model

For the validation of shape file the KML layer is added to the google earth and rechecks it as accordingly.

3. Existing Baseline Information

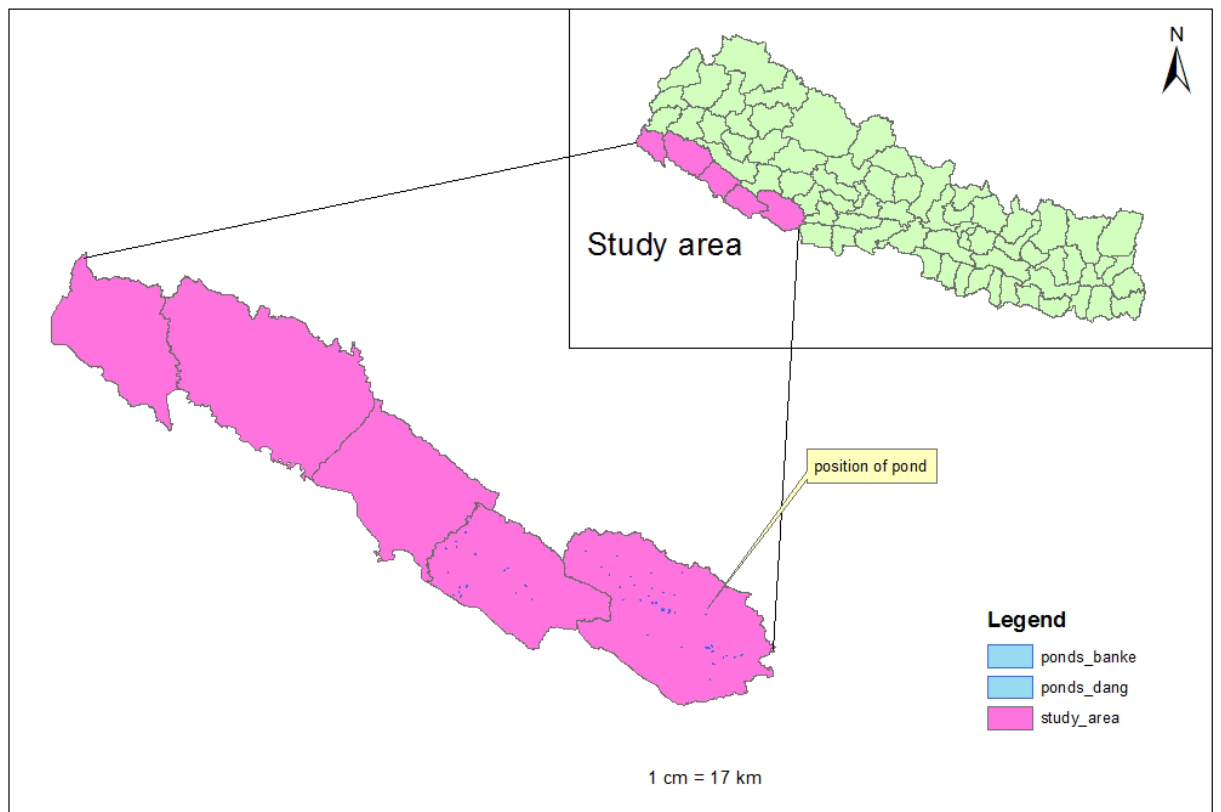


Figure 4: Location of study area

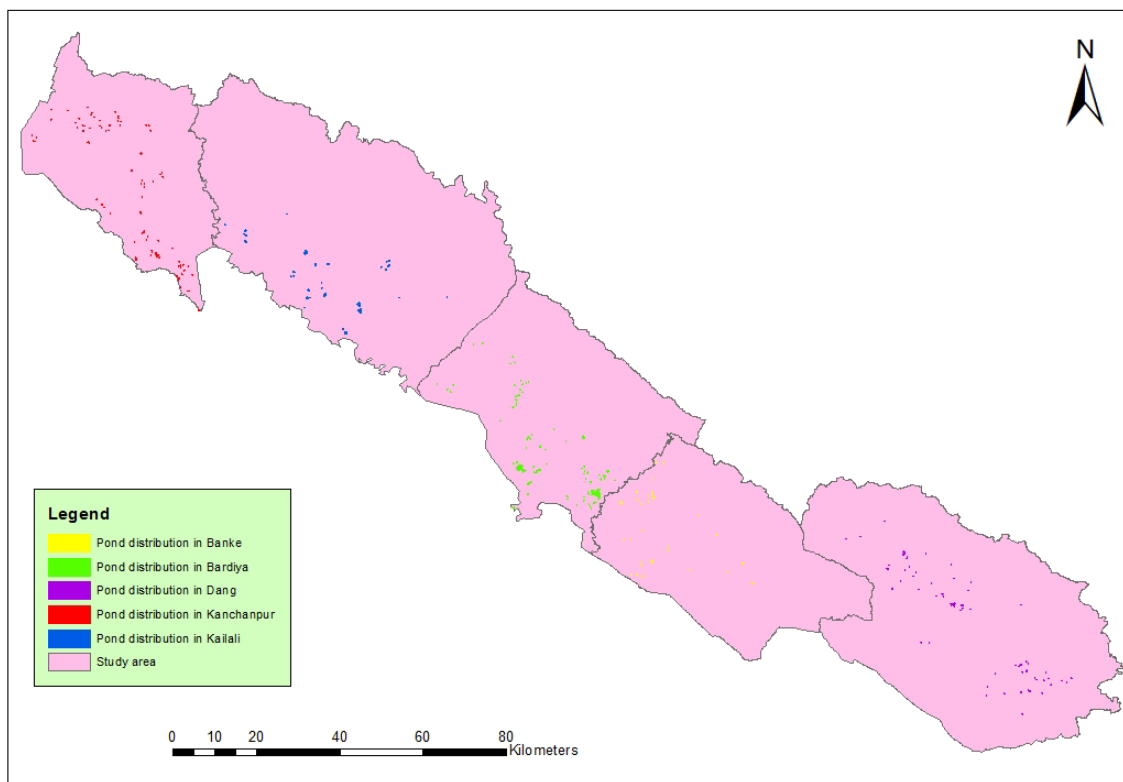


Figure 5 Distribution of pond in study area

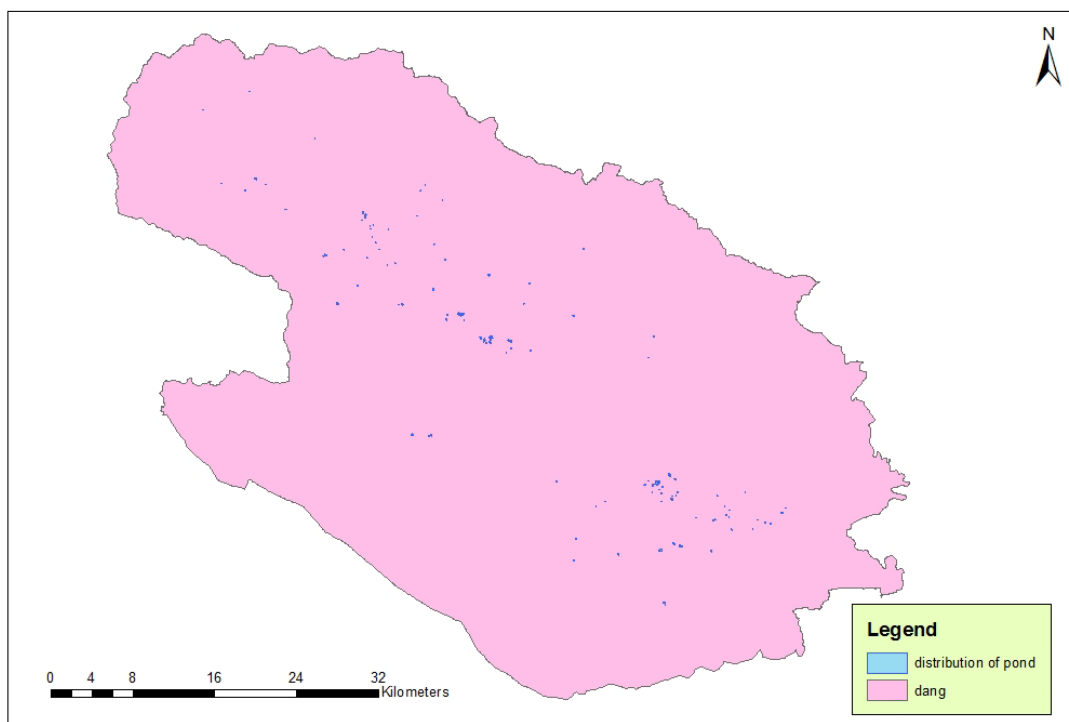


Figure 6: Distribution of pond in Dang District



Figure 7 Distribution of pond in Dang District



Figure 8 Distribution of pond in Banke District

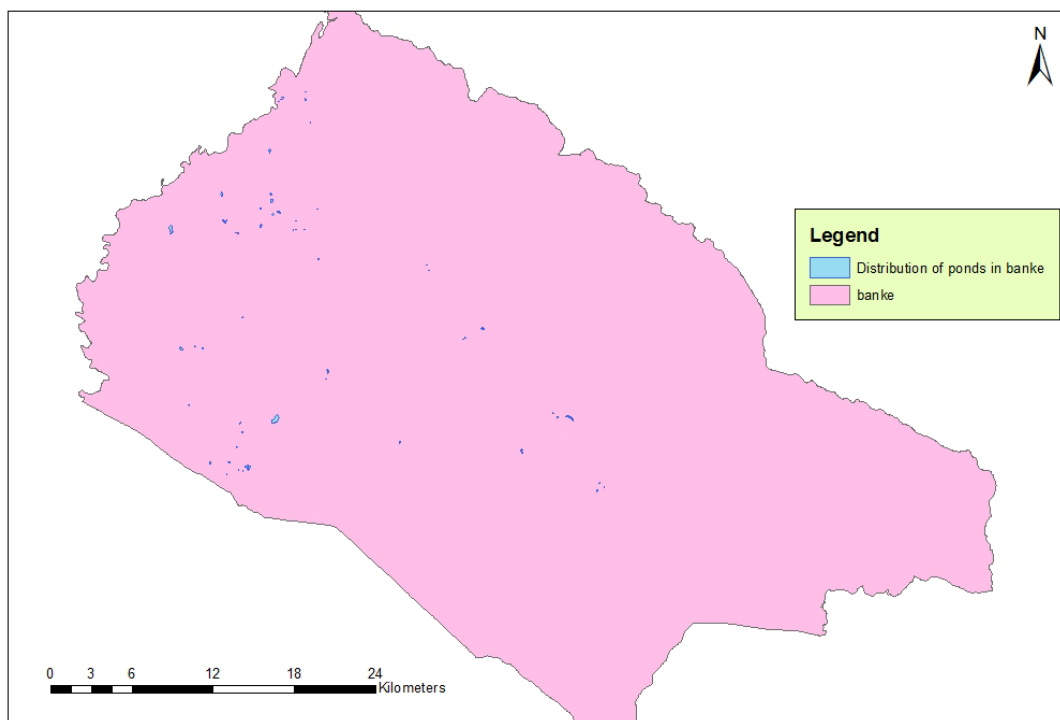


Figure 9: Distribution of pond in Banke District



Figure 10 Distribution of pond in Bardiya

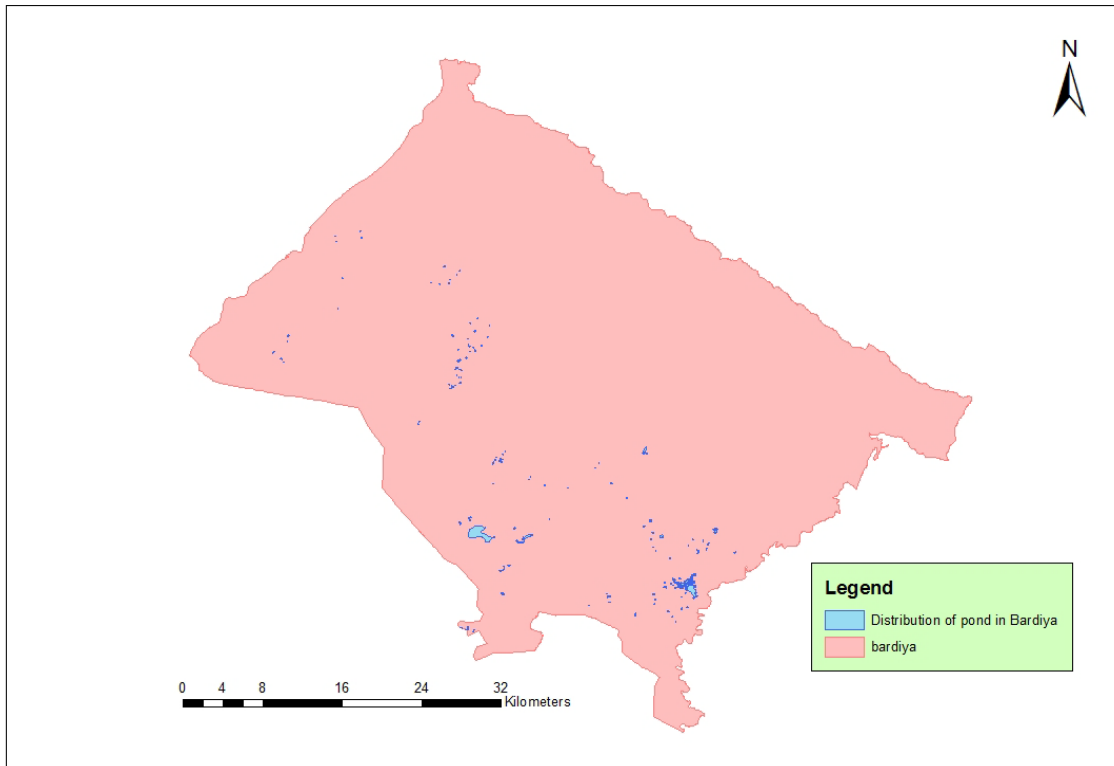


Figure 11 : Distribution of pond in Bardiya

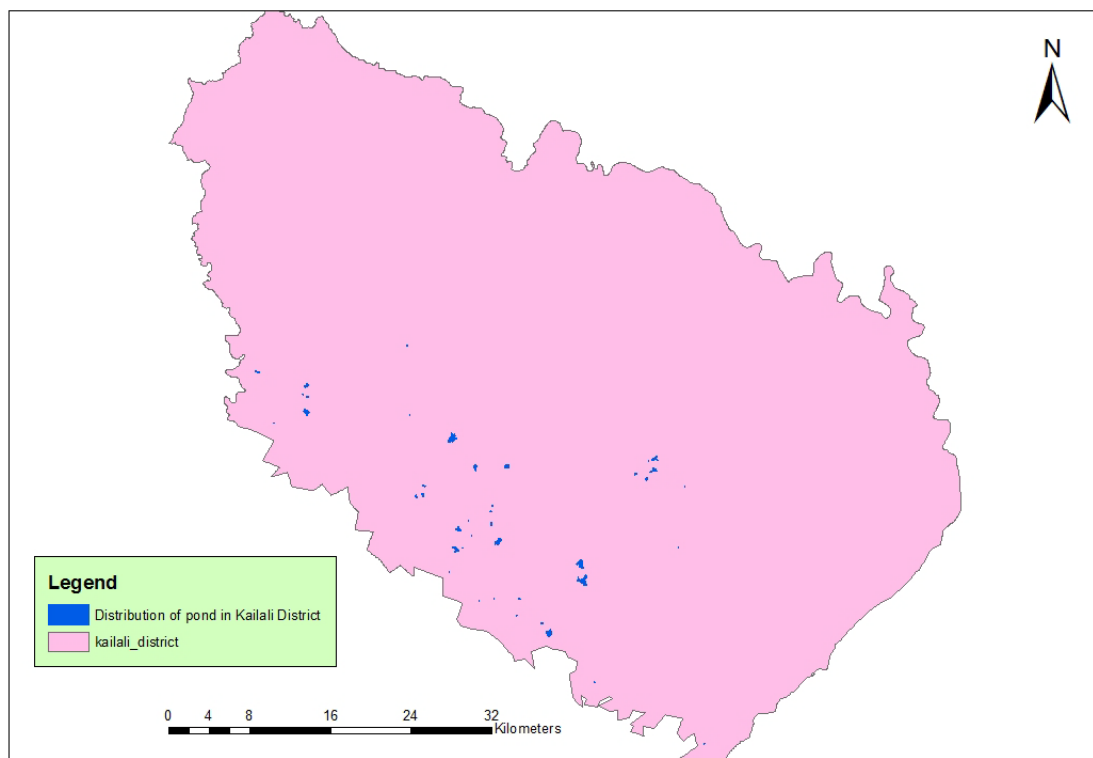


Figure 12 Distribution of ponds in Kailali

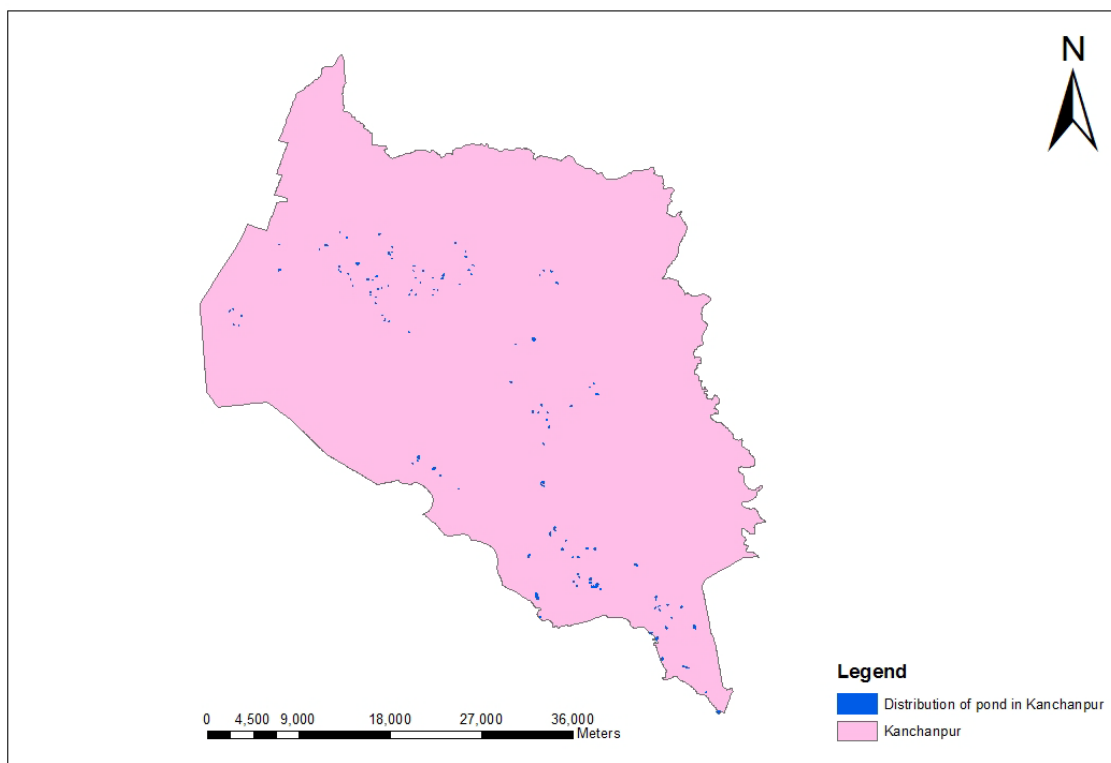


Figure 13: Distribution of pond in Kanchanpur

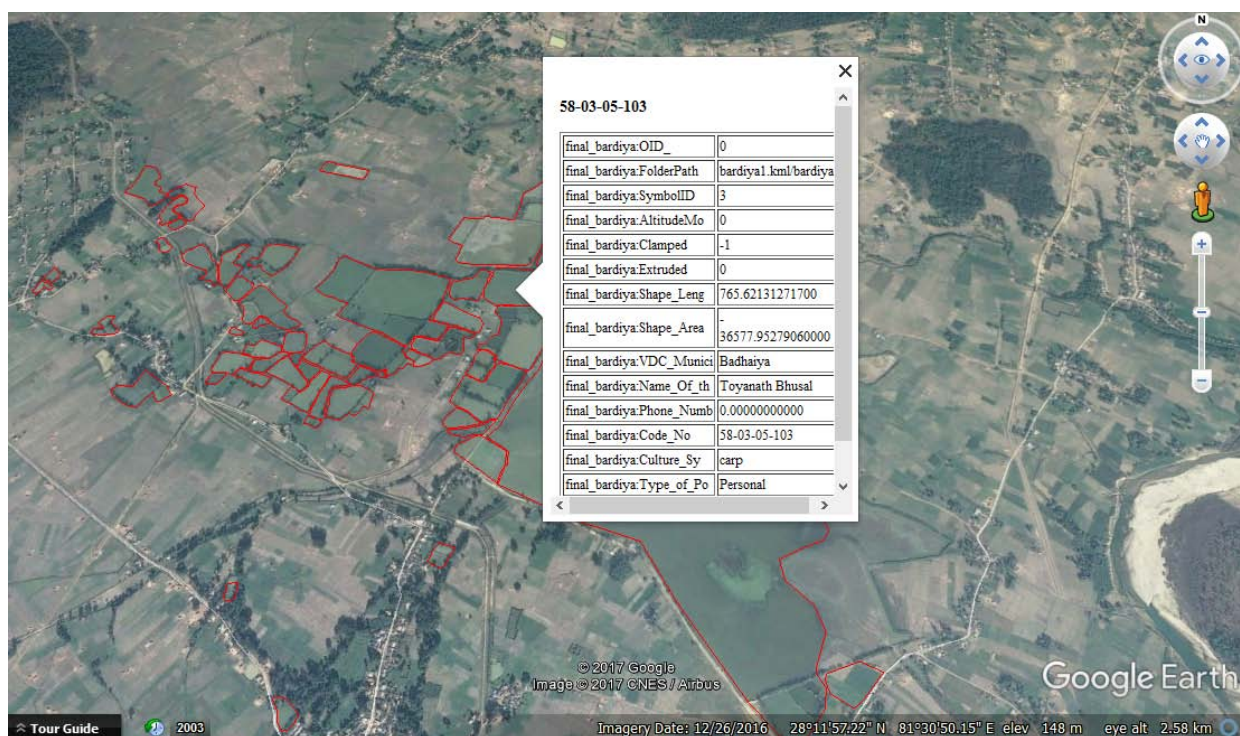


Figure 14: View from google earth showing entity of pond in Bardiya

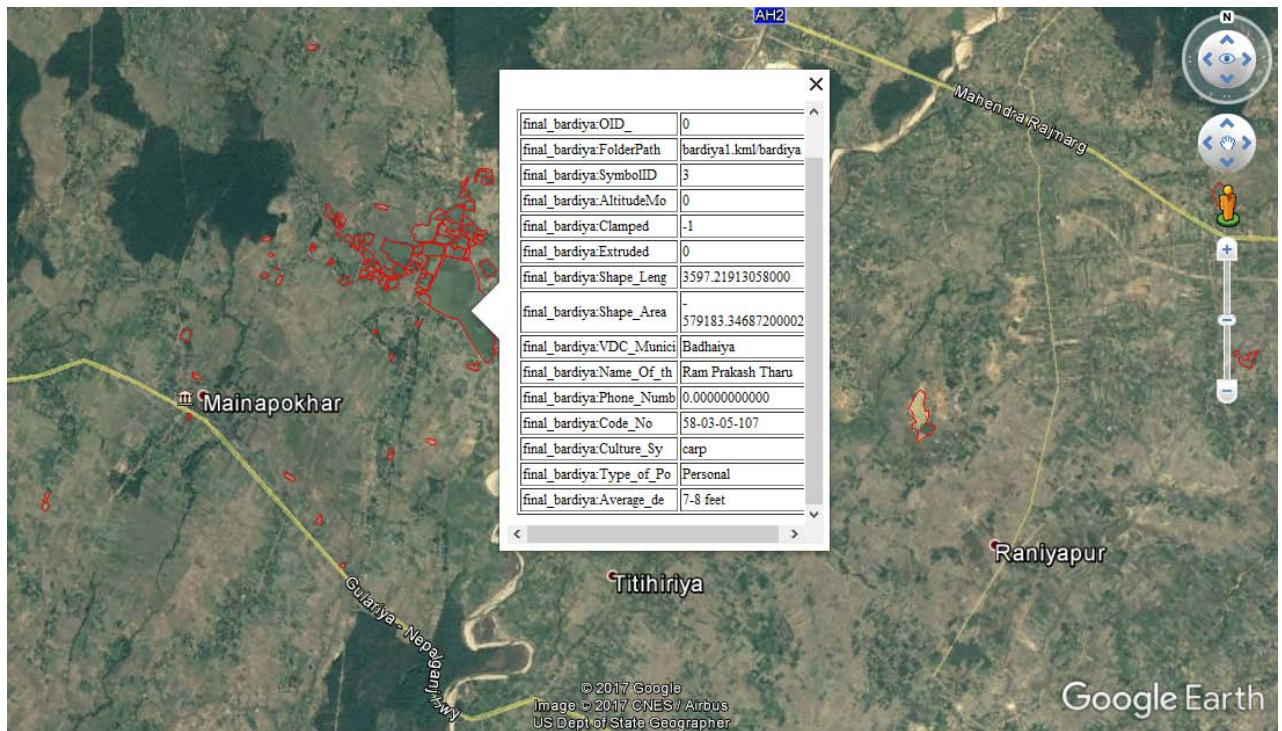


Figure 15: View from google earth (Ponds in Bardiya)

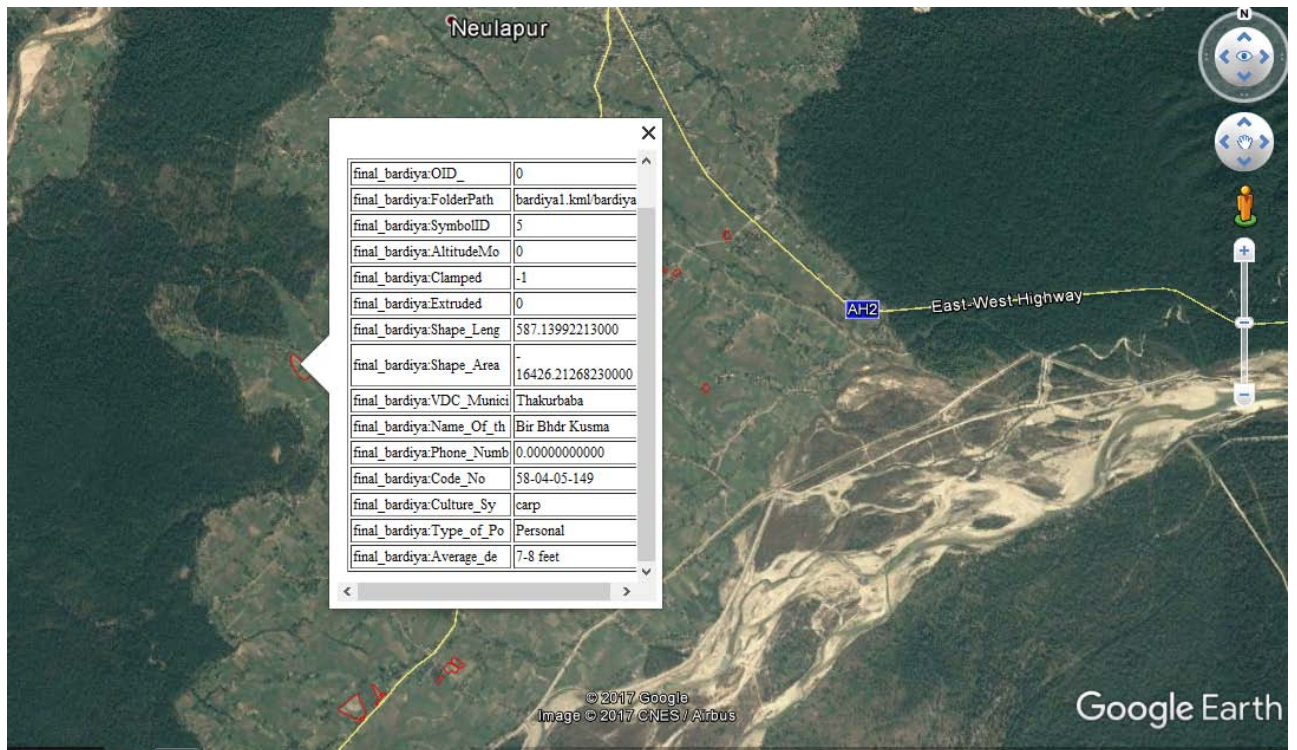


Figure 16: View from google earth

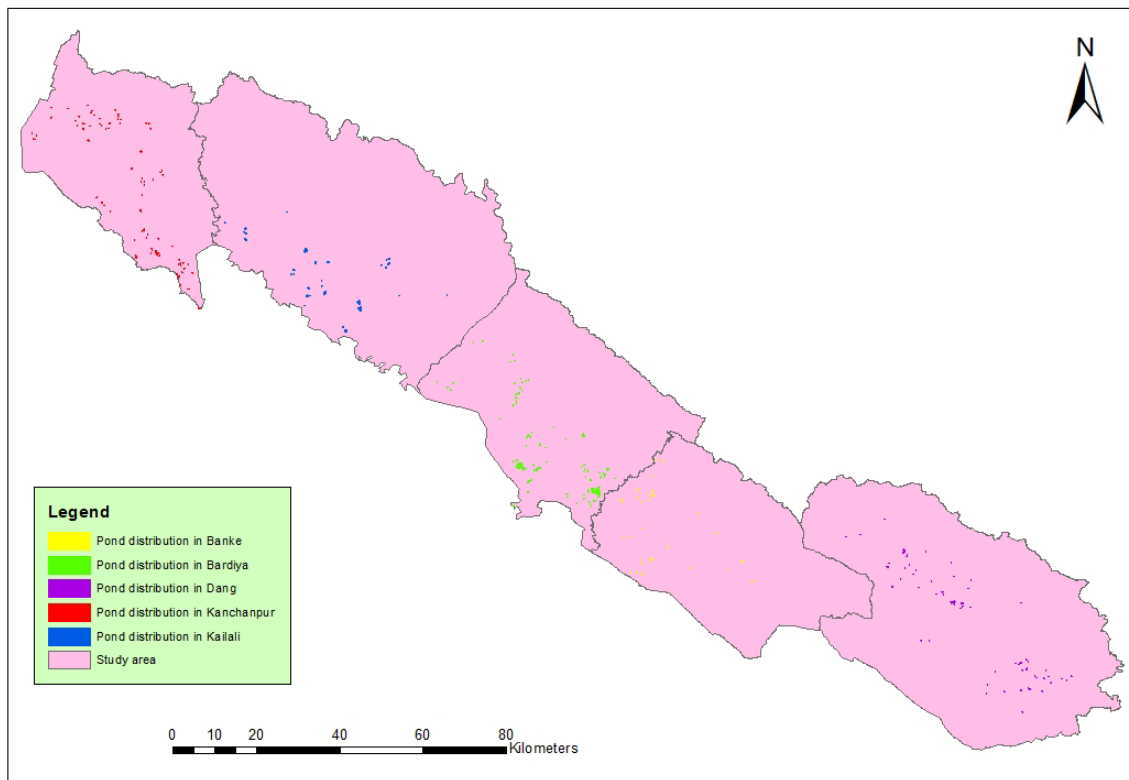


Figure 17 Overall Distribution of Pond in the Study Ar

4. Conclusion

The Fish Farming is getting enhanced by the farmer as their main business and government is also supportive for the preparation of ponds, preparation of hechary system and the many equipment which is used in fish farming. It had been found that many ponds were constructed by the help of government.

The following findings were made:

S.No.	District	Water Surfacr Area(Ha) of the Ponds	Remarks
1	Dang	115.51	
2	Banke	76.03	
3	Bardiya	363.23	
4	Kailali	890.16	
5	Kanchanpur	262.81	
	Total	1707.73	

Annex:4

Ponds distribution in Dang District									
S.nos.	Code_No	Municipality/VDC	Name of the farmer	Perimeter(m)	Water Surface Area (ha)	Culture System	Ownership	Latitude	Longitude
1	56-04-03-154	TULSIPUR SUB METRO -13	LOKMAN CHAUDHARY	261.65	0.3384	Carp	Personal	27.8708	82.5549
2	56-04-02-158	TULSIPUR SUB METRO -13	RADHEY RADHEY KRISHI FARM	172.83	0.1905	Carp	Personal	28.1235	82.3221
3	56-04-02-156	TULSIPUR SUB METRO -13	DEV NARAYAN CHAUDHARY	138.77	0.1202	Carp	Personal	28.0496	82.3907
4	56-04-02-157	TULSIPUR SUB METRO -13	HARI NARAYAN CHAUDHARY	104.57	0.0725	Carp	Personal	28.0631	82.3476
5	56-05-05-155	TULSIPUR SUB METRO -13	NIM BD GHARTI MAGAR	216.68	0.2912	Carp	Personal	27.8329	82.6731
6	56-04-03-153	TULSIPUR SUB METRO -13	DEVA OLI	240.40	0.3572	Carp	Personal	27.9927	82.3945
7	56-06-12-136	TULSIPUR SUB METRO -13	BHARAT KHADKA	138.35	0.1137	Carp	Personal	27.8365	82.6187
8	56-06-10-147	TULSIPUR SUB METRO -13	PANDAV BUDATHOKI	231.73	0.3628	Carp	Personal	27.8338	82.6325
9	56-06-10-146	TULSIPUR SUB METRO -13	BIR BD BASNET	1,003.12	3.9628	Carp	Personal	27.8282	82.6356
10	56-06-10-148	TULSIPUR SUB METRO -13	DIL BD KHATRI	542.65	1.4671	Carp	Personal	27.9832	82.4340
11	56-06-18-143	TULSIPUR SUB METRO -13	MADAN GIRI	244.13	0.3233	Carp	Personal	28.0384	82.2613
12	56-06-15-114	TULSIPUR SUB METRO-14	BAHUUDASHYA KRISHI FARM TATHA PASUPALAN	126.95	0.0734	Carp	Personal	28.0631	82.3476
13	56-06-11-121	TULSIPUR SUB METRO-14	YOGENDRA MATSHYA PALAN	225.90	0.2890	Carp	Personal	27.8329	82.6731
14	56-06-11-120	TULSIPUR SUB METRO-14	YOGENDRA MATSHYA PALAN	571.55	1.7790	Carp	Personal	27.7621	82.5686
15	56-06-07-150	TULSIPUR SUB METRO -13	CHABILAL NEUPANE	157.47	0.1203	Carp	Personal	28.2089	82.1499
16	56-06-11-122	TULSIPUR SUB METRO-14	TEK BD CHAUDHARY	180.03	0.1166	Carp	Personal	27.7621	82.5686
17	56-06-12-144	TULSIPUR SUB METRO -13	OM AGRICULTURE PVT LTD	193.61	0.2499	Carp	Personal	27.7621	82.5686
18	56-06-11-145	TULSIPUR SUB METRO -13	YAGYA FISH FARM	335.74	0.3684	Carp	Personal	27.8680	82.4618

S.nos.	Code_No	Municipality/VDC	Name of the farmer	Perimeter(m)	Water Surface Area (ha)	Culture System	Ownership	Latitude	Longitude
19	56-06-13-119	TULSIPUR SUB METRO-14	RESHAM KHADKA	738.79	2.1494	Carp	Personal	27.7627	82.5705
20	56-06-14-112	TULSIPUR SUB METRO-14	MUKESH MAMATA MACHA FARM	437.42	1.0284	Carp	Personal	27.9929	82.4118
21	56-06-14-111	TULSIPUR SUB METRO-14	KHADK MACHHA FARM	394.15	0.8907	Carp	Personal	28.1269	82.1679
22	56-06-14-110	TULSIPUR SUB METRO-14	PURNA BD KC	235.45	0.1533	Carp	Personal	28.0789	82.3817
23	56-06-14-113	TULSIPUR SUB METRO-14	KC BAHUUDASHYA KRISHI FARM	588.27	2.1083	Carp	Personal	28.0429	82.4325
24	56-06-15-118	TULSIPUR SUB METRO-14	TULSI RAM REGMI	261.48	0.1589	Carp	Personal	27.8697	82.5627
25	56-06-15-117	TULSIPUR SUB METRO-14	AMIT REGMI	96.88	0.0650	Carp	Personal	28.1171	82.4609
26	56-06-15-116	TULSIPUR SUB METRO-14	BHIM BD KHATRI	204.59	0.1310	Carp	Personal	28.1235	82.3221
27	56-06-15-115	TULSIPUR SUB METRO-14	BAHUUDASHYA KRISHI FARM TATHA PASUPALAN	129.19	0.0978	Carp	Personal	28.0496	82.3907
28	56-06-12-142	TULSIPUR SUB METRO -13	BIRBAL KHADKA	257.38	0.2245	Carp	Personal	28.0894	82.2736
29	56-06-13-139	TULSIPUR SUB METRO -13	YAMA RAJ KC	40.11	0.0095	Carp	Personal	27.8194	82.4813
30	56-06-13-140	TULSIPUR SUB METRO -13	YAMA RAJ KC	245.03	0.2330	Carp	Personal	28.2089	82.1499
31	56-06-17-152	TULSIPUR SUB METRO -13	NARAYAN REGMI	235.12	0.1869	Carp	Personal	28.0496	82.3907
32	56-06-19-151	TULSIPUR SUB METRO -13	NARAYAN REGMI	191.84	0.2490	Carp	Personal	27.7621	82.5686
33	56-06-12-135	TULSIPUR SUB METRO-12	DHAN BD BASNET	377.33	0.2352	Carp	Personal	28.0384	82.2613
34	56-06-07-149	TULSIPUR SUB METRO -13	KAMAL PD BHUSAL	91.41	0.0470	Carp	Personal	28.1171	82.4609
35	56-06-13-141	TULSIPUR SUB METRO -13	MADHUR CHAUDHARY	304.12	0.4082	Carp	Personal	28.0713	82.2817
36	56-06-13-137	TULSIPUR SUB METRO -13	RAGA BD BASNET	285.44	0.4350	Carp	Personal	28.0815	82.2751
37	56-06-13-138	TULSIPUR SUB METRO -13	LAL SHANKAR GHIMIRE	172.29	0.1881	Carp	Personal	28.0918	82.2729

S.nos.	Code_No	Municipality/VDC	Name of the farmer	Perimeter(m)	Water Surface Area (ha)	Culture System	Ownership	Latitude	Longitude
38	56-06-17-160	TULSIPUR SUB METRO -13	JANAK REGMI	259.21	0.3671	Carp	Personal	28.0922	82.2753
39	56-06-17-161	TULSIPUR SUB METRO -13	LOK BD KHATRI	119.27	0.0899	Carp	Personal	28.1269	82.1679
40	Total area(ha) in Tulsipur Sub Metro				20.0525				
41	56-02-05-36	GADUA GAUNPALIKA	DILLI RAJ SHARMA	571.92	0.9188	Carp	Personal	28.1216	82.1477
42	56-02-04-34	GADUA GAUNPALIKA	DP MATSHYA PALAN FORM	480.62	0.7614	Carp	Personal	27.9832	82.4340
43	56-02-05-34	GADUA GAUNPALIKA	GYAN PATH LAL CHAUDHARY	620.77	2.2807	Carp	Personal	28.1922	82.1044
44	56-02-05-29	GADUA GAUNPALIKA	DANGALI MACHHA PALAN FARM	875.77	4.5283	Carp	Personal	27.8194	82.4813
45	56-02-04-30	GADUA GAUNPALIKA	HEY RISHI KRISHI BAHUUDASHYA PASUPALAN FARM	176.93	0.1367	Carp	Personal	28.0894	82.2736
46	56-02-04-32	GADUA GAUNPALIKA	HEM RAJ SMIRTHI MATSHYA FARM	1,104.09	3.0516	Carp	Personal	28.0894	82.2736
47	56-02-04-31	GADUA GAUNPALIKA	HEY RISHI KRISHI BAHUUDASHYA PASUPALAN FARM	630.94	2.0153	Carp	Personal	27.8269	82.6363
48	56-02-04-37	GADUA GAUNPALIKA	RAM BAHADUR KC	195.18	0.2376	Carp	Personal	27.8599	82.5817
49	56-02-05-35	GADUA GAUNPALIKA	TUK BAHADUR KC	163.29	0.1377	Carp	Personal	27.8365	82.6187
50	56-02-05-35	GADUA GAUNPALIKA	TUK BAHADUR KC	143.21	0.1325	Carp	Personal	27.8338	82.6325
51	56-02-05-30	Gauda Gaunpalika	Ramesh Thapa	651.47	2.1481	Carp	Personal	27.7621	82.5686
52	56-02-04-33	GADUA GAUNPALIKA	BIKASH BUDHATHOKI	792.00	3.2205	Carp	Personal	27.8194	82.4813
53	Total area(ha) in GADUA GAUNPALIKA				19.5692				
54	56-07-06-128	BABAI GAUN PALIKA 8	SHER BHANDARI	173.50	0.0946	Carp	Personal	28.1014	82.3196
55	56-07-07-129	BABAI GAUN PALIKA 8	PREM BD KHATRI	125.61	0.0431	Carp	Personal	27.9929	82.4118
56	56-08-02-125	BABAI GAUN PALIKA 8	GHAMANDA KHADKA	50.50	0.0165	Carp	Personal	27.8269	82.6363
57	56-08-04-126	BABAI GAUN PALIKA 8	SHER BD OLI	138.79	0.0589	Carp	Personal	27.7621	82.5686
58	56-07-06-127	BABAI GAUN PALIKA 8	KRISHNA KC	557.27	1.4620	Carp	Personal	27.8269	82.6363
59	56-08-05-124	BABAI GAUN PALIKA 8	INDRA OLI	49.62	0.0093	Mangur	Personal	28.0229	82.3065
60	Total area(ha) in BABAI GAUNPALIKA				1.6845				
61	56-01-05-10	GORAHAI SUB METO. CITY	NARENDRA BUDHA	162.48	0.1076	Carp	Personal	27.7627	82.5705
62	56-01-05-28	GORAHAI SUB METO. CITY	KALPANA KHANAL	247.49	0.4092	Carp	Personal	28.0894	82.2736

S.nos.	Code_No	Municipality/VDC	Name of the farmer	Perimeter(m)	Water Surface Area (ha)	Culture System	Ownership	Latitude	Longitude
63	56-01-05-26	GORAHAI SUB METO. CITY	BIBEK BUDHA THOKI	172.51	0.1859	Carp	Personal	27.8708	82.5549
64	56-01-05-27	GORAHAI SUB METO. CITY	KALPANA KHANAL	121.69	0.0864	Carp	Personal	28.0384	82.2613
65	56-01-05-07,08	GORAHAI SUB METO. CITY 5	GHUMAN SINGH KARKI	241.96	0.3677	Carp	Personal	28.0384	82.2613
66	56-01-05-13	GORAHAI SUB METO. CITY	PS FARM	150.42	0.1625	Carp	Personal	28.0713	82.2817
67	56-01-05-12	GORAHAI SUB METO. CITY	PS FARM	189.63	0.2226	Carp	Personal	28.0815	82.2751
68	56-01-05-14	GORAHAI SUB METO. CITY	PS FARM	272.82	0.3833	Carp	Personal	28.0918	82.2729
69	56-01-05-20	GORAHAI SUB METO. CITY	JEET BAHADUR BUDHA	133.73	0.0888	Mangur	Personal	28.0922	82.2753
70	56-01-05-21	GORAHAI SUB METO. CITY	LILA BD. BUDHA	109.18	0.0745	Carp	Personal	28.1014	82.3196
71	56-01-05-11	GORAHAI SUB METO. CITY	PS FARM	195.98	0.2291	Carp	Personal	28.1216	82.1477
72	56-01-05-17	GORAHAI SUB METO. CITY	PS FARM	195.29	0.2077	Mangur	Personal	27.7621	82.5686
73	56-01-17-02	GORAHAI SUB METO. CITY 17	SHRINJANSHIL KRISHI TATHA PASUPALAN FORM	122.44	0.0725	Carp	Personal	27.8365	82.6187
74	56-01-17-03	GORAHAI SUB METO. CITY 17	SHRINJANSHIL KRISHI TATHA PASUPALAN FORM	103.22	0.0703	Carp	Personal	27.8338	82.6325
75	56-01-17-04	GORAHAI SUB METO. CITY 17	SHRINJANSHIL KRISHI TATHA PASUPALAN FORM	191.59	0.1478	Carp	Personal	27.8282	82.6356
76	56-01-17-05	GORAHAI SUB METO. CITY 17	SHRINJANSHIL KRISHI TATHA PASUPALAN FORM	165.85	0.1297	Carp	Personal	27.9832	82.4340
77	56-01-17-06	GORAHAI SUB METO. CITY 17	SHRINJANSHIL KRISHI TATHA PASUPALAN FORM	192.72	0.1405	Carp	Personal	28.1922	82.1044

S.nos.	Code_No	Municipality/VDC	Name of the farmer	Perimeter(m)	Water Surface Area (ha)	Culture System	Ownership	Latitude	Longitude
78	56-01-17-01	GORAHAI SUB METO. CITY 17	SHRINJANSHIL KRISHI TATHA PASUPALAN FORM	190.82	0.1456	Carp	Cooperative	28.0894	82.2736
79	56-01-05-18	GORAHAI SUB METO. CITY	PS FARM	184.44	0.1920	Mangur	Personal	27.7627	82.5705
80	56-01-05-09	GORAHAI SUB METO. CITY	NARENDRA BUDHA	164.76	0.1612	Carp	Personal	27.9929	82.4118
81	56-01-05-22	GORAHAI SUB METO. CITY	MACHHAPUCHRE KRISHI FARM	122.50	0.0842	Carp	Personal	28.1269	82.1679
82	56-01-05-19	GORAHAI SUB METO. CITY	PS FARM	129.44	0.1123	Mangur	Personal	28.0789	82.3817
83	56-01-05-25	GORAHAI SUB METO. CITY	MACHHAPUCHRE KRISHI FARM	175.26	0.1189	Mangur	Personal	28.0429	82.4325
84	56-01-05-23 56-01-05-23	GORAHAI SUB METO. CITY	MACHHAPUCHRE KRISHI FARM	262.52	0.4376	Carp	Personal	27.8697	82.5627
85	56-01-05-24	GORAHAI SUB METO. CITY	MACHHAPUCHRE KRISHI FARM	224.53	0.3041	Carp	Personal	28.1171	82.4609
86	56-01-05-24	GORAHAI SUB METO. CITY	MACHHAPUCHRE KRISHI FARM	257.93	0.3783	Carp	Personal	28.1235	82.3221
87	56-01-05-169	GHORAI-08	JUNDHA KC	315.23	0.5285	Carp	Personal	28.0631	82.3476
88	56-01-05-168	GHORAI-08	PS FARM	783.26	2.5154	Carp	Personal	27.7621	82.5686
89		DANG		841.63	1.6248	Carp	Personal	27.7621	82.5686
90	56-01-05-171	GHORAI-08	TEK CHAND KC	598.90	1.2908	Carp	Personal	27.8680	82.4618
91	56-01-05-166	GHORAI-08	SUMAN RAUT, SAMU NARAYAN SHRESTHA	730.19	2.3165	Carp	Personal	27.8510	82.5099
92	56-01-05-167	GHORAI-08	DEEPAK RAUT	867.66	2.7240	Carp	Personal	28.1055	82.1879
93	56-01-03-165	GHORAI-08	JEEVAN CHAND	255.14	0.4438	Carp	Personal	28.0789	82.3817
94	56-01-05-170	GHORAI-08	MADAN KC	1,134.71	3.4853	Carp	Personal	28.0922	82.2753
95	56-06-08-162	GHORAI-08	SHER BD GHARTI	112.02	0.0618	Carp	Personal	27.8697	82.5627
96	56-04-03-102	GHORAI-08	GAUTAM MATSHYAPALAN TATHA HACHERY	542.81	1.2760	Carp	Personal	28.0922	82.2753
97		GHORAI-09	SHREE BDH. DAHAL	154.77	0.1407	Carp	Personal	27.8282	82.6356
98	56-01-09-163	GHORAI-08	MANGAL SHAH	92.04	0.0532	Carp	Personal	27.7621	82.5686

S.nos.	Code_No	Municipality/VDC	Name of the farmer	Perimeter(m)	Water Surface Area (ha)	Culture System	Ownership	Latitude	Longitude
99	56-04-03-102	GHORAI-08	GAUTAM MATSHYAPALAN TATHA HACHERY	114.61	0.0638	Carp	Personal	27.8338	82.6325
100	56-01-09-164	GHORAI-08	NARENDRA SHAH, LARINA JALASHAYA	673.17	1.0510	Carp	Personal	28.1235	82.3221
101	Total area(ha) in GHORAI SUB METRO				22.5960				
102	56-05-07-84	LAMAHI -03	BASANTA ADHIKARI	63.25	0.0031	Carp	Personal	28.0631	82.3476
103	56-05-06-92	LAMAHI -03	RAM PD CHAUDHARY	95.76	0.0466	Carp	Personal	27.8194	82.4813
104	56-04-03-53	LAMAHI-03	OLI AGRO INDUSTRIES	1,440.87	10.9040	Carp	Personal	28.0429	82.4325
105	56-05-06-76	LAMAHI -03	LAHU RAM CHAUDHARY	127.08	0.0890	Carp	Personal	27.8269	82.6363
106	56-05-07-80	LAMAHI -03	JANAKI DEVI	80.69	0.0407	Carp	Personal	28.0229	82.3065
107	56-05-07-83	LAMAHI -03	MANOJ KUMAR CHAUDHARY	286.00	0.1882	Carp	Personal	27.9927	82.3945
108	56-05-07-85	LAMAHI -03	PREM BD GC	119.55	0.0864	Carp	Personal	27.8194	82.4813
109	56-04-02-57	LAMAHI MUNICIPALITY	SHIVA SHAKTI MATSHYA FARM	440.85	0.7454	Carp	Personal	28.0713	82.2817
110	56-05-06-91, 72	LAMAHI -03	SOMNATH CHAUDHARY, DHARMA UPRETY	259.43	0.1690	Carp	Personal	27.8194	82.4813
111	56-05-07-82	LAMAHI -03	LAL MAMOHAD MIYA	348.57	0.5362	Carp	Personal	27.8194	82.4813
112	56-05-04-90	LAMAHI -03	ROHAN PD CHAUDHARY	116.38	0.0653	Carp	Personal	27.8329	82.6731
113	56-05-06-78	LAMAHI -03	DHANYA RAM	53.89	0.0154	Carp	Personal	27.8708	82.5549
114	56-04-03-60	LAMAHI	DHURBA CHAUDHARY	88.95	0.0494	Carp	Personal	27.9929	82.4118
115	56-04-03-104	LAMAHI -03	GAUTAM MATSHYAPALAN TATHA HACHERY	132.96	0.0849	Carp	Personal	28.1269	82.1679
116	56-04-03-61	LAMAHI MUNICIPALITY	SHANKAR CHAUDHARY	112.07	0.0676	Carp	Personal	28.0789	82.3817
117	56-04-02-62	LAMAHI MUNICIPALITY	JAKHERA SHIWALAYA SAMRAKSHYAN PRATISTHAN	1,300.76	5.9505	Carp	Personal	28.0429	82.4325
118	56-05-06-75	LAMAHI -03	TARUN KUMAR CHAUDHARY	92.62	0.0501	Carp	Personal	28.0384	82.2613
119	56-05-04-89	LAMAHI -03	SHARDA GHIMIRE	194.93	0.2139	Carp	Personal	28.0384	82.2613

S.nos.	Code_No	Municipality/VDC	Name of the farmer	Perimeter(m)	Water Surface Area (ha)	Culture System	Ownership	Latitude	Longitude
120	56-04-03-104	LAMAHI -03	GAUTAM MATSHYAPALAN TATHA HACHERY	233.73	0.2969	Carp	Personal	28.0384	82.2613
121	56-05-07-81	LAMAHI -03	BHIM LAL CHAUDHARY	50.80	0.0114	Carp	Personal	28.0713	82.2817
122	56-04-07-46	LAMAHI	SWARGADWARI EKKIKRIT KRISHI FARM	380.91	0.7117	Carp	Personal	27.8680	82.4618
123	56-04-06-42	LAMAHI	PRUSOTTAM CHAUDHARY	58.77	0.0155	Carp	Personal	27.8510	82.5099
124		LAMAHI		90.44	0.0493	Carp	Personal	28.1055	82.1879
125	56-05-06-79	LAMAHI -03	KRISHNA KUMAR	62.90	0.0193	Carp	Personal	27.8680	82.4618
126	56-05-06-73	LAMAHI -03	SOMNATH CHAUDARY	47.31	0.0086	Carp	Personal	27.8510	82.5099
127	56-04-03-104	LAMAHI -03	GAUTAM MATSHYAPALAN TATHA HACHERY	101.23	0.0522	Carp	Personal	27.8599	82.5817
128	56-04-03-51	LAMAHI-03	TRISHAKTI SAMUDAIK	480.74	1.3781	Carp	Cooperative	27.8194	82.4813
129	56-04-02-58	LAMAHI MUNICIPALITY	BHARAT CHAUDHARY	220.99	0.2314	Carp	Personal	27.7627	82.5705
130	56-04-09-47	LAMAHI-09	BAGAR BABA KRISHI SAHA KARI SANSTHA	406.72	0.9687	Carp	Cooperative	27.8194	82.4813
131		DANG		350.29	0.7033	Carp	Personal	28.0894	82.2736
132	56-04-09-50	LAMAHI	HARIYALI SAMUDAIK BAN UPAVOKTA SAMUHA	662.14	2.1629	Carp	Cooperative	27.8194	82.4813
133	56-04-02-57	LAMAHI MUNICIPALITY	SHIVA SHAKTI MATSHYA FARM	0.00	0.0000	Carp	Personal	28.0894	82.2736
134	56-04-03-104	LAMAHI -03	GAUTAM MATSHYAPALAN TATHA HACHERY	123.24	0.0815	Carp	Personal	27.8365	82.6187
135	56-04-06-42	LAMAHI MUNICIPALITY	SUKRA RAJ CHAUDHARY	156.37	0.1315	Carp	Personal	27.8269	82.6363
136	56-05-04-87	LAMAHI -03	PRASIDDHI AGRO AND PROCESSING PVT LTD	166.84	0.1613	Carp	Personal	27.9832	82.4340
137	56-05-04-88	LAMAHI -03	PRASIDDHI AGRO AND PROCESSING PVT LTD	291.18	0.3454	Carp	Personal	27.8194	82.4813
138	56-05-04-86	LAMAHI -03	PRASIDDHI AGRO AND PROCESSING PVT LTD	310.52	0.2867	Carp	Personal	28.0894	82.2736
139	56-04-06-43	LAMAHI MUNICIPALITY	CHAMI HAMAL	108.62	0.0632	Carp	Personal	28.0229	82.3065
140	56-04-02-59	LAMAHI MUNICIPALITY	DAMAR CHAUDHARY	51.36	0.0041	Carp	Personal	27.9927	82.3945

S.nos.	Code_No	Municipality/VDC	Name of the farmer	Perimeter(m)	Water Surface Area (ha)	Culture System	Ownership	Latitude	Longitude
141	56-04-03-54	LAMAHI	DIGO MACHHA FARM	426.74	1.0592	Carp	Personal	27.8194	82.4813
142	56-04-03-55	LAMAHI	SHIVA ACHARYA	478.89	1.3341	Carp	Personal	27.8194	82.4813
143	56-04-03-56	LAMAHI	MAMITA MACHHA FARM	533.43	1.4087	Carp	Personal	27.8194	82.4813
144	56-04-06-45	LAMAHI MUNICIPALITY	ANNUPARNA KRISHI CHAUPAYA FARM	118.60	0.0726	Carp	Personal	27.8194	82.4813
145	56-04-03-52	LAMAHI	SWARGADWARI KRISHI FARM PVT LTD	589.18	1.2713	Carp	Personal	27.8194	82.4813
146	56-05-06-71	LAMAHI -03	SOMNATH CHAUDHARY	141.74	0.0859	Carp	Personal	27.9832	82.4340
147	56-05-06-74	LAMAHI -03	KALI PD CHAUDHARY	92.99	0.0452	Carp	Personal	28.1922	82.1044
148	56-05-06-75	LAMAHI	RAJAN CHAUDHARI	125.18	0.1063	Carp	Personal	27.8269	82.6363
149	56-05-06-76	LAMAHI	HARKA CHAUDHARI	99.05	0.0492	Carp	Personal	28.0229	82.3065
150	56-05-06-77	LAMAHI	SAPAN CHAUDHARY	152.34	0.1271	Carp	Personal	27.9927	82.3945
151	Total area(ha) in LAMAHI SUB METRO				32.5484				
152	56-01-01-175	RAPTI GAUNPALIKA	KIRA N CHAUDHARY	288.37	0.5967	Carp	Personal	27.8194	82.4813
153	56-01-01-176	RAPTI GAUNPALIKA	REWAT HUMAGAIN	278.27	0.3535	Carp	Personal	27.8194	82.4813
154	56-01-01-177	RAPTI GAUNPALIKA	JAWED ALAM	409.88	0.8034	Carp	Personal	27.8194	82.4813
155	56-01-01-178	RAPTI GAUNPALIKA	SANTOSH CHAUDHARY	81.89	0.0046	Carp	Personal	27.8194	82.4813
156	56-01-05-108	RAPTI GAUNPALIKA	BABAI MATSHYA PALAN FARM	0.00	0.0000	Carp	Personal	27.8194	82.4813
157	56-05-06-68	RAPTI GAUPALIKA	AMERENDRA CHAUDHRY	148.91	0.1597	Carp	Personal	27.8194	82.4813
158	56-01-05-107	RAPTI GAUNPALIKA	POSHAN KC	177.31	0.1871	Carp	Personal	27.9832	82.4340
159	56-01-02-173	RAPTI GAUNPALIKA	TARJAN KHADKA	221.91	0.1462	Carp	Personal	28.0496	82.3907
160	56-01-01-172	RAPTI GAUNPALIKA	CHARINGA DAHA	34.02	0.0035	Carp	Personal	27.8329	82.6731
161	56-01-01-174	RAPTI GAUNPALIKA	KIRA N CHAUDHARY	94.19	0.0519	Carp	Personal	27.8599	82.5817
162	56-01-05-108	RAPTI GAUNPALIKA	BABAI MATSHYA PALAN FARM	921.40	3.0002	Carp	Personal	27.8269	82.6363
163	56-01-05-109	RAPTI GAUNPALIKA	SAKENDRA SHAH	1,386.67	6.3274	Carp	Personal	28.2089	82.1499
164	56-05-06-65	RAPTI GAUPALIKA	SHYAM DEV CHAUDARY	342.56	0.4806	Carp	Personal	27.8194	82.4813
165	56-05-06-66	RAPTI GAUPALIKA	BAM DEV CHAUDARY	106.26	0.0617	Carp	Personal	27.8194	82.4813
166	56-05-06-67	RAPTI GAUPALIKA	BISHNU CHAUDARY	119.34	0.0896	Carp	Personal	27.8194	82.4813

S.nos.	Code_No	Municipality/VDC	Name of the farmer	Perimeter(m)	Water Surface Area (ha)	Culture System	Ownership	Latitude	Longitude
167	56-05-04-93	RAPTI GAUNPALIKA	TUNUKNATH CHAUDHARY	88.41	0.0499	Carp	Personal	28.0894	82.2736
168	56-05-04-94	RAPTI GAUNPALIKA		79.55	0.0107	Carp	Personal	27.8194	82.4813
169	56-05-06-64	RAPTI GAUNPALIKA	SARAD KUMAR CHAUDHARY	369.90	0.6365	Carp	Personal	27.8194	82.4813
170	56-05-04-94	RAPTI GAUNPALIKA	SUNIL CHAUDHARY	102.42	0.0472	Carp	Personal	27.8708	82.5549
171	56-05-05-96	RAPTI GAUNPALIKA	DINESH CHAUDHARY	146.66	0.0888	Carp	Personal	28.0384	82.2613
172	56-05-05-98	RAPTI GAUNPALIKA	GANESH KUMAR CHAUDHARY	193.31	0.1520	Carp	Personal	28.0815	82.2751
173	56-05-05-99	RAPTI GAUNPALIKA		58.37	0.0226	Carp	Personal	28.0918	82.2729
174	56-04-03-101	RAPTI GAUNPALIKA	GAUTAM MATSHYAPALAN TATHA HACHERY	608.07	1.1354	Carp	Personal	28.1014	82.3196
175	56-04-03-100	RAPTI GAUNPALIKA	TARA PD ADHIKARI	284.71	0.3825	Carp	Personal	28.1216	82.1477
176	56-04-03-103	RAPTI GAUNPALIKA	HARI POKHREL	198.67	0.2548	Carp	Personal	27.7621	82.5686
177	56-01-05-106	RAPTI GAUNPALIKA	BUDDI RAM CHAUDHARY	131.02	0.0860	Carp	Personal	27.8697	82.5627
178	56-01-07-105	RAPTI GAUNPALIKA	KHUSI RAM CHAUDHARY	269.66	0.4491	Carp	Personal	28.1171	82.4609
179	56-01-07-106	RAPTI GAUNPALIKA		33.70	0.0047	Carp	Personal	27.8510	82.5099
180	56-01-07-107	RAPTI GAUNPALIKA		21.96	0.0026	Carp	Personal	28.1055	82.1879
181	56-01-07-108	RAPTI GAUNPALIKA		248.34	0.3428	Carp	Personal	27.8599	82.5817
182	56-05-05-99	RAPTI GAUNPALIKA	KALAPANI SAMUDAIR BAN UPVOKTA SAMUHA	200.38	0.2389	Carp	Personal	27.8194	82.4813
183	56-05-06-63	RAPTI GAUNPALIKA	AATMARAM BHANDARI	163.47	0.1440	Carp	Personal	28.0815	82.2751
184	56-05-05-95	RAPTI GAUNPALIKA	NARAYAN CHAUDHARY	154.01	0.1373	Carp	Personal	28.0918	82.2729
185	56-01-01-172	RAPTI GAUNPALIKA	BHOTE DAHA BAN BATIKA	381.90	0.7001	Carp	Personal	28.1014	82.3196
186	56-01-01-173	RAPTI GAUNPALIKA		286.38	0.3284	Carp	Personal	28.1216	82.1477
187	56-05-05-97	RAPTI GAUNPALIKA	JANGEERI CHAUDHARY	86.20	0.0418	Carp	Personal	27.7621	82.5686
188	56-05-06-70	RAPTI GAUNPALIKA	RAMOUTAR	47.37	0.0160	Carp	Personal	28.1055	82.1879
189	Total area(ha) in RAPTI GAUNPALIKA				17.5383				

S.nos.	Code_No	Municipality/VDC	Name of the farmer	Perimeter(m)	Water Surface Area (ha)	Culture System	Ownership	Latitude	Longitude
190	56-03-01-40	RAJPUR GAUN PALIKA-	DEVISTHAN SAMUDAIK BAN UPAVOKTA SAMUHA	232.39	0.2798	Carp	Cooperative	27.8282	82.6356
191	56-03-01-41	RAJPUR GAUN PALIKA-	MANI RAM CHAUDHARY	55.94	0.0216	Carp	Personal	27.8194	82.4813
192	56-03-01-39	RAJPUR GAUN PALIKA-1	PARSURAM CHAUDHARY 804	226.27	0.3181	Carp	Personal	28.2089	82.1499
193	Total area(ha) in RAJPUR GAUNPALIKA				0.6195				
194	56-07-06-123	SANTINAGAR GAUNPALIKA6	DILLI BD KUWAR	135.31	0.1045	Carp	Personal	27.8194	82.4813
195	56-07-04-131	SANTINAGAR GAUNPALIKA6	PARLA MAN DAMAI	323.65	0.3253	Carp	Personal	27.9832	82.4340
196	Total area(ha) in SANTINAGAR GAUNPALIKA				0.4298				
197	56-09-06-130	DANGI SARAN -06	PRAKASH HAMAL	257.03	0.3721	Carp	Personal	28.1922	82.1044
198		DANGI SARAN-06	NARESH POUDEL	11.43	0.0006	Carp	Personal	28.0894	82.2736
199		DANGI SARAN -06	HARI SHARMA	173.50	0.0946	Carp	Personal	27.8269	82.6363
200	Total area(ha) in DANGI SARAN -06				0.4674				
201	Total area in ha				115.51				

Annex: 1

Distribution of ponds in Banke Districts										
S.no.	Code_No	VDC_Municipality	Name of the farmer	Perimeter(m)	Water surface Area(sq.m)	Water surface Area(Ha)	Culture system	Ownership	Latitude	Longitude
1	57-01-01-01	Baijyanath	Surrendra Tharu	156.27	1489.79	0.15	Carp	Personal	28.2738	81.6526
2	57-01-01-01	Baijyanath	Surrendra Tharu	156.27	1489.79	0.15	Carp	Personal	28.2734	81.6526
3	57-01-01-02	Baijyanath	Khusiram Tharu	147.96	1367.17	0.14	Carp	Personal	28.2734	81.6529
4	57-01-01-03	Baijyanath	Birkha Bdr Buda	51.90	186.06	0.02	Carp	Personal	28.2735	81.6530
5	57-01-01-04	Baijyanath	Parbati Tharu	319.17	5611.37	0.56	Carp	Personal	28.2735	81.6530
6	57-01-04-51	Baijyanath	Anil Sen Thakuri	550.29	14470.47	1.45	Carp	Personal	28.2732	81.6703
7	57-01-07-10	Baijyanath	Mjr.Rajesh Psd Khatrri	689.42	20171.51	2.02	Carp	Personal	28.2711	81.6506
8	57-01-01-05	Baijyanath	Rabindra Kmr Chaudary	134.61	1276.46	0.13	Carp	Personal	28.2738	81.6530
9	57-01-01-06	Baijyanath	Ferru Chaudary	380.04	5200.67	0.52	Carp	Personal	28.2738	81.6529
10	57-01-01-07	Baijyanath	Deepak Jaisi	157.98	1702.03	0.17	Carp	Personal	28.2738	81.6528
11	57-01-06-09	Baijyanath	Babu Sahi Thakuri	1098.67	26084.33	2.61	Carp	Personal	28.2735	81.6543
12	57-01-05-12	Baijyanath	Central Agro Farm 2	733.63	34393.19	3.44	Carp	Personal	28.2733	81.6542
13	57-01-08-11	Baijyanath	Central Agro Farm 1	1740.01	94805.89	9.48	Carp	Personal	28.2732	81.6542
	Total area(ha) in Baijyanath				208248.73	20.82				
14	57-04-02-13	Rapti-Sonari	Prem Bhdr. Bhandari	1465.49	50365.03	5.04	Carp	Personal	28.2731	81.6542
15	57-04-09-81	Rapti-Sonari	Jhuplal Oli	68.76	281.25	0.03	Carp	Personal	28.2711	81.6505
16	57-04-09-82	Rapti-Sonari	Bharat Khadka	73.99	352.57	0.04	Carp	Personal	28.2710	81.6505
17	57-04-02-14	Rapti-Sonari	Keshav Raj poudel	130.78	372.72	0.04	Carp	Personal	28.2731	81.6543
18	57-04-02-22	Rapti-Sonari	Tapta Poudel	148.98	1527.61	0.15	Carp	Personal	28.2731	81.6545
19	57-04-02-20	Rapti-Sonari	Devendra Poudel	176.14	1520.04	0.15	Carp	Personal	28.2732	81.6545
20	57-04-02-20	Rapti-Sonari	Devendra Poudel	176.14	1520.04	0.15	Carp	Personal	28.2733	81.6545
21	57-04-04-24	Rapti-Sonari	Huma Shanker Oli	126.89	1100.69	0.11	Carp	Personal	28.2733	81.6544
22	57-04-04-25	Rapti-Sonari	Guman Singh Nepali	210.42	2750.84	0.28	Carp	Personal	28.2734	81.6544
23	57-04-04-26	Rapti-Sonari	Saty Narayan Tharu	111.24	702.08	0.07	Carp	Personal	28.2735	81.6543
24	57-04-04-27	Rapti-Sonari	Bir Bhdr. Thapa	397.81	6234.20	0.62	Carp	Personal	28.2729	81.6527
25	57-04-08-31	Rapti-Sonari	ShewakRam Khadka	345.48	7242.96	0.72	Carp	Personal	28.2722	81.6708
26	57-04-05-28	Rapti-Sonari	Siddeswori Samdayk Ban Upabhota Samuha	277.61	5558.07	0.56	Carp	Forests and national parks	28.2729	81.6528
27	57-04-05-29	Rapti-Sonari	Karna Bhdr. Bura	41.76	110.94	0.01	Carp	Personal	28.2730	81.6528

S.no.	Code_No	VDC_Municipality	Name of the farmer	Perimeter(m)	Water surface Area(sq.m)	Water surface Area(Ha)	Culture system	Ownership	Latitude	Longititude
28	57-04-05-30	Rapti-Sonari	Bhola Prasad Oli	474.23	8217.63	0.82	Carp	Personal	28.2730	81.6528
29	57-04-08-36	Rapti-Sonari	Fisheries Development Centre	657.71	24803.55	2.48	Carp	Government	28.2731	81.6527
30	57-04-08-37	Rapti-Sonari	Ratiram Tharu	102.56	664.65	0.07	Carp	Personal	28.2732	81.6526
31	57-04-08-38	Rapti-Sonari	Jhotu Tharu	129.58	1017.04	0.10	Carp	Personal	28.2733	81.6525
32	57-04-08-39	Rapti-Sonari	Gorak Bhadr Hamal	61.68	242.56	0.02	Carp	Personal	28.2731	81.6523
Total area(ha) in Rapti Sonari					114584.47	11.46				
33	57-03-05-42	Kohalpur	Prithivi Pal Tharu	141.22	1063.21	0.11	Carp	Personal	28.2730	81.6524
34	57-03-06-41	Kohalpur	Pandit Tharu	78.73	364.51	0.04	Carp	Personal	28.2729	81.6526
35	57-03-06-45	Kohalpur	Sriram Tharu	50.59	168.25	0.02	Carp	Personal	28.2729	81.6527
36	57-03-05-43	Kohalpur	Palliram Tharu	96.55	676.87	0.07	Carp	Personal	28.2725	81.6516
37	57-03-05-44	Kohalpur	Khadakram Tharu	110.37	882.38	0.09	Carp	Personal	28.2722	81.6516
38	57-03-03-08	Kohalpur	Amrit Kmr. Tharu	407.06	10557.39	1.06	Carp	Personal	28.2738	81.6526
39	57-03-03-46	Kohalpur	Ajay Chaudary	637.83	22984.21	2.30	Carp	Personal	28.2711	81.6506
40	57-03-03-48	Kohalpur	Ram Shanker Tharu	774.55	35601.00	3.56	Carp	Personal	28.2711	81.6506
41	57-03-03-50	Kohalpur	Bhagwan Tharu	409.30	9750.00	0.98	Carp	Personal	28.2711	81.6506
42	57-03-11-49	Kohalpur	Bheri Seed Bhandar	151.91	1751.68	0.18	Carp	Personal	28.2730	81.6699
43	57-03-03-51	Kohalpur	Oudesh Chaudary	241.43	3825.18	0.38	Carp	Personal	28.2712	81.6506
44	57-03-15-53	Kohalpur	Chandu Chaudary	610.04	17343.08	1.73	Carp	Personal	28.2712	81.6505
45	57-03-08-55	Kohalpur	Hari Sharma	266.97	4661.12	0.47	Carp	Personal	28.2712	81.6505
Total area(ha) in Kohalpur					109628.88	10.96				
46	57-05-04-59	Janaki	Janaki Gaupalika	177.11	1969.66	0.20	Carp	Personal	28.2711	81.6504
47	57-05-04-60	Janaki	Ashok Kumar Berma	86.41	429.96	0.04	Carp	Personal	28.2727	81.6702
48	57-05-04-57	Janaki	Sarwajanik Talau	290.90	5990.95	0.60	Carp	Personal	28.2722	81.6706
49	57-05-05-56	Janaki	Sarwajanik Talau	202.38	2085.51	0.21	Carp	Personal	28.2722	81.6708
50	57-05-06-58	Janaki	Subash Ghimere	707.54	30470.26	3.05	Carp	Personal	28.2711	81.6504
Total area(ha) in Janaki					40946.34	4.09				
51	57-06-23-62	Indrapuri	Sumir Shamsher Rana	207.69	3062.03	0.31	Carp	Personal	28.2711	81.6504
52	57-07-23-63	Nepalgunj	Puraina Tal	1791.71	178104.89	17.81	Carp	Government	28.2711	81.6504
53	57-07-07-64	Nepalgunj	Rani Tal	321.13	7391.98	0.74	Carp	Government	28.2711	81.6505
54	57-07-09-72	Nepalgunj	Sarwajanik Talau	134.67	1221.20	0.12	Carp	Personal	28.2711	81.6505

S.no.	Code_No	VDC_Municipality	Name of the farmer	Perimeter(m)	Water surface Area(sq m)	Water surface Area(Ha)	Culture system	Ownership	Latitude	Longititude
55	57-07-14-68	Nepalgunj	Jay Mata Devi Mandir	191.61	2347.92	0.23	Carp	Forests and national parks	28.2711	81.6505
56	57-07-09-70	Nepalgunj	Kallu Yadav	64.83	255.31	0.03	Carp	Personal	28.2711	81.6505
57	57-07-19-75	Nepalgunj	Narendra Kumar Chaudary	195.60	2699.12	0.27	Carp	Personal	28.2711	81.6505
58	57-07-19-76	Nepalgunj	Raj Kumar Khadka	622.19	18675.86	1.87	Carp	Personal	28.2711	81.6505
59	57-07-21-65	Nepalgunj	Jamil Jaisgal	298.05	6327.09	0.63	Carp	Personal	28.2778	81.6708
60	57-07-15-66	Nepalgunj	Kismat Ali Darzi	109.06	695.16	0.07	Carp	Personal	28.2777	81.6705
61	57-07-14-67	Nepalgunj	Pappu Singh Thakur	136.40	1365.97	0.14	Carp	Personal	28.2775	81.6706
62	57-07-14-73	Nepalgunj	Sarwajanik Talau	244.56	3972.13	0.40	Carp	Government	28.2774	81.6708
63	57-07-14-74	Nepalgunj	Bankhe Lal	106.22	745.22	0.07	Carp	Personal	28.2775	81.6709
64	57-07-09-69	Nepalgunj	Bishnu Upreti	128.16	838.95	0.08	Carp	Personal	28.2777	81.6709
65	57-07-09-71	Nepalgunj	Ram Kumar Yadav	107.33	758.52	0.08	Carp	Personal	28.2778	81.6708
66	57-07-19-77	Nepalgunj	Balaram Khatri	469.04	13891.01	1.39	Carp	Personal	28.2711	81.6505
67	57-07-19-78	Nepalgunj	Tulsi Bhdr. Khadka	413.87	10081.85	1.01	Carp	Personal	28.2711	81.6505
68	57-07-19-79	Nepalgunj	Gautam Chaudary	332.88	6624.74	0.66	Carp	Personal	28.2711	81.6505
	Total area(ha) in Nepalgunj				255996.92	25.60				
69	57-02-05-32	Duduwa	Ganganath Yogi	959.10	25890.13	2.59	Carp	Personal	28.2723	81.6710
70	57-02-05-33	Duduwa	Lal Bhdr. Budathoki	128.14	1037.01	0.10	Carp	Personal	28.2724	81.6710
71	57-02-05-34	Duduwa	Dil Bhdr. Budathoki	92.32	564.34	0.06	Carp	Personal	28.2727	81.6708
72	57-02-05-35	Duduwa	Khim Bhdr Budathoki	69.86	334.15	0.03	Carp	Personal	28.2730	81.6705
	Total area(ha) in Duduwa				27825.63	2.78				
	Total area(ha)					76.03				

Annex:5

Ponds Distribution in Bardiya District

S.No.	VDC/Municipality	Name of the farmer	cell number	Code No.	Perimeter(m)	Water surface area(Ha)	Culture System	Ownership	Latitude	Longitude
1	Bara-Bardiya	Raghubir Chaudary	9,848,217,372	58-01-05-01	113.57	0.08	Carp	Personal	28.2960	81.3671
2	Bara-Bardiya	Batashi Tharu	9,855,070,012	58-01-05-02	178.39	0.14	Carp	Personal	28.2962	81.3675
3	Bara-Bardiya	Nadhu Tharu	9,868,207,396	58-01-05-03	123.36	0.10	Carp	Personal	28.2981	81.3692
4	Bara-Bardiya	Kishulal Tharu	9,819,522,600	58-01-05-04	84.77	0.04	Carp	Personal	28.2983	81.3693
5	Bara-Bardiya	Janajyoti School	-	58-01-09-225	494.99	1.49	carp	Personal	28.2034	81.5011
6	Bara-Bardiya	Lekhram Tharu	-	58-01-09-226	206.51	0.25	carp	Personal	28.2033	81.5011
7	Bara-Bardiya	Ram Psd. Tharu	-	58-01-09-227	198.52	0.21	carp	Personal	28.2032	81.5011
8	Bara-Bardiya	Bardiya National Parks(Satsuluwa Tal)	-	58-01-09-228	2,388.77	12.01	carp	forest_national	28.2031	81.5012
9	Bara-Bardiya	Khima Poudek	9,819,577,082	58-01-06-05	97.93	0.06	Carp	Personal	28.3267	81.3842
10	Bara-Bardiya	Tulsi Tharu	-	58-01-11-133	294.69	0.44	carp	Personal	28.2027	81.5026
11	Bara-Bardiya	Sarwajanik Talau	-	58-01-11-134	370.71	0.51	carp	Government	28.2026	81.5028
12	Bara-Bardiya	Krsihna Khadka	-	58-01-10-135	208.41	0.16	carp	Personal	28.2026	81.5029
13	Bara-Bardiya	Lalu Psd. Bhusal	-	58-01-07-136	178.11	0.15	carp	Personal	28.2026	81.5030
14	Bara-Bardiya	Bholaram Tharu	9,822,539,295	58-01-03-06	68.97	0.03	Carp	Personal	28.3172	81.3511
15	Bara-Bardiya	Prakash Chaudary	-	58-01-03-07	187.70	0.11	Carp	Personal	28.3184	81.3439
16	Bara-Bardiya	Nara Bhdr Bhujel	9,812,423,288	58-01-03-08	167.26	0.11	Carp	Personal	28.3116	81.3434
17	Bara-Bardiya	Bir Bhdr Rajbanshi	9,748,001,110	58-01-03-09	116.66	0.08	Carp	Personal	28.3116	81.3434
18	Bara-Bardiya	Gedhu Tharu	9,812,486,016	58-01--03-10	69.74	0.03	Carp	Personal	28.3214	81.3466
19	Bara-Bardiya	Hariram Tharu	9,748,001,109	58-01-03-11	165.51	0.16	Carp	Personal	28.3213	81.3465
20	Bara-Bardiya	Santa Tharu	9,866,764,039	58-01-03-12	162.82	0.17	Carp	Personal	28.3214	81.3466
21	Bara-Bardiya	Haliram Tharu	9,815,593,135	58-01-03-13	140.99	0.12	Carp	Personal	28.3187	81.3469
22	Bara-Bardiya	Bijay Kmr. Tharu	9,812,457,448	58-01-03-14	104.67	0.03	Carp	Personal	28.3142	81.3436
23	Bara-Bardiya	Man Bhdr. Bhujel	9,848,011,114	58-01-03-15	264.60	0.30	Carp	Personal	28.3064	81.3448
24	Bara-Bardiya	Susma Bhujel	9,866,864,189	58-01-03-16	128.94	0.08	Carp	Personal	28.3126	81.3407
25	Bara-Bardiya	Harikala Khanal	9,815,544,329	58-01-03-17	626.48	1.17	Carp	Personal	28.3117	81.3425
26	Bara-Bardiya	Ramnath Tharu	9,812,472,545	58-01-03-18	72.44	0.03	Carp	Personal	28.3136	81.3424
27	Bara-Bardiya	Ramnath Tharu	9,812,472,545	58-01-03-18-0	71.47	0.03	Carp	Personal	28.3143	81.3420
28	Bara-Bardiya	Laaxmi Psd. Tharu	9,748,004,176	58-01-03-19-0	314.94	0.42	Carp	Personal	28.3143	81.3420
29	Bara-Bardiya	Laaxmi Psd. Tharu	9,748,004,176	58-01-03-19-0	216.01	0.24	Carp	Personal	28.3131	81.3414
30	Bara-Bardiya	Phat Bhdr. Bhujel	-	58-01-03-20	214.01	0.22	Carp	Personal	28.3161	81.3379
31	Bara-Bardiya	Harishanker Tharu	-	58-01-03-21	148.83	0.13	Carp	Personal	28.3157	81.3380
Total area(ha) in Bara Bardiya						19.10				

S.No.	VDC/Municipality	Name of the farmer	cell number	Code No.	Perimeter(m)	Water surface area(Ha)	Culture System	Ownership	Latitude	Longitude
32	Gulariya	Khadka Bhdr Dangi	-	58-02-04-23	320.99	0.36	Carp	Personal	28.3101	81.3351
33	Gulariya	Basudev Sharma	-	58-02-04-24	298.03	0.50	Carp	Personal	28.3098	81.3349
34	Gulariya	Bagahar Tal	-	58-02-04-22	4,160.99	21.32	Carp	Government	28.3101	81.3351
35	Gulariya	Purshottam Gautam	-	58-02-04-25	474.57	1.14	Carp	Personal	28.3135	81.3372
36	Gulariya	Kotahi Tal	-	58-02-04-26	540.69	1.08	Carp	Personal	28.2920	81.3350
37	Gulariya	Sarwajanik Talau	-	58-02-04-27	1,669.97	3.73	Carp	Government	28.2433	81.3624
38	Gulariya	Bharat Chaudary	-	58-02-08-28	372.38	0.74	Carp	Personal	28.2427	81.3620
39	Gulariya	Sarwajanik Talau	-	58-02-08-29	793.48	1.49	Carp	Government	28.2413	81.3568
40	Gulariya	Sarwajanik Talau	-	58-02-02-43	7,222.52	156.88	Carp	Personal	28.1898	81.4384
41	Gulariya	Sarwajanik Talau	-	58-02-02-44	1,087.28	3.08	Carp	Personal	28.1855	81.4412
42	Gulariya	Krsihna adhikari	-	58-02-01-45	190.05	0.15	Carp	Personal	28.1922	81.4808
43	Gulariya	Lal Bhdr. Chaudari	9,868,155,935	58-02-01-46	408.23	0.68	Carp	Personal	28.1879	81.4817
44	Gulariya	Janajyoti Machhapalan	-	58-02-09-30-0	325.93	0.38	Carp	Personal	28.2518	81.3548
45	Gulariya	Janajyoti Machhapalan	-	58-02-09-30-0	791.53	1.22	Carp	Personal	28.2190	81.3505
46	Gulariya	Janajyoti Machhapalan	-	58-02-09-30-0	257.72	0.28	Carp	Personal	28.2144	81.3432
47	Gulariya	Pragatisil Machhpalan Samuha	9,816,546,992	58-02-09-31	99.25	0.06	Carp	Personal	28.1929	81.3438
48	Gulariya	Mane Sunar	-	58-02-09-32-0	483.21	0.52	Carp	Personal	28.1932	81.3435
49	Gulariya	Mane Sunar	-	58-02-09-32-0	227.07	0.18	Carp	Personal	28.1614	81.3123
50	Gulariya	Surya Machhapalan Samuha	9,824,515,698	58-02-09-33	499.38	0.96	Carp	Personal	28.1627	81.3125
Total area(ha) in Gulariya						194.77				
51	Badhaiya	Prachalal Napit	9,858,026,423	58-03-08-34	245.13	0.23	Carp	Personal	28.1633	81.3124
52	Badhaiya	Laxminath Poudel	-	58-03-08-35	280.27	0.43	Carp	Personal	28.1622	81.3074
53	Badhaiya	Lal Bhdr. Pun	9,848,042,398	58-03-08-36	287.89	0.30	Carp	Personal	28.1608	81.3101
54	Badhaiya	Gobinda Tharu	-	58-03-08-37	152.50	0.10	Carp	Personal	28.1590	81.3173
55	Badhaiya	Dilliram tharu	9,848,130,922	58-03-08-38	571.86	1.07	Carp	Personal	28.1825	81.4222
56	Badhaiya	Rabinchandra Gyawali	9,843,378,680	58-03-08-39	197.60	0.23	Carp	Personal	28.1907	81.4410
57	Badhaiya	Pradeep Geoli	9,848,081,252	58-03-08-40	306.25	0.29	Carp	Personal	28.1930	81.4373
58	Badhaiya	Sarwajanik Talau	-	58-03-06-41	440.64	1.21	Carp	Personal	28.1881	81.4358
59	Badhaiya	Sarwajanik Talau	-	58-03-06-42	350.53	0.49	Carp	Personal	28.1907	81.4407

S.No.	VDC/Municipality	Name of the farmer	cell number	Code No.	Perimeter(m)	Water surface area(Ha)	Culture System	Ownership	Latitude	Longitude
60	Badhaiya	Mitralal Bhattarai	9,848,198,234	58-03-06-47	330.16	0.55	Carp	Personal	28.2446	81.3369
61	Badhaiya	Gopal Lamsal	9,858,044,460	58-03-05-48	265.92	0.44	others	Personal	28.2597	81.3147
62	Badhaiya	Gopal Lamsal	9,858,044,460	58-03-05-48-0	471.70	1.09	others	Personal	28.2576	81.3046
63	Badhaiya	Chandra Prakash Lamsal	9,858,021,465	58-03-05-49	628.68	1.50	others	Personal	28.2059	81.4972
64	Badhaiya	Dev Bhdr. Gurung	-	58-03-05-50	465.37	0.75	Carp	Personal	28.2575	81.3045
65	Badhaiya	Bhim Bhdr. B.K	-	58-03-05-51	502.34	0.87	Carp	Personal	28.2574	81.3043
66	Badhaiya	Timathi Tharu	-	58-03-05-52	159.16	0.16	Carp	Personal	28.2574	81.3043
67	Badhaiya	Sumit Tharu	-	58-03-05-53	370.24	0.47	Carp	Personal	28.2573	81.3042
68	Badhaiya	Bishnu Baral	-	58-03-05-54	552.93	1.23	Carp	Personal	28.2572	81.3043
69	Badhaiya	Ganesh Sharma Lamsal	-	58-03-05-55	543.34	0.90	Carp	Personal	28.2572	81.3043
70	Badhaiya	Laxman Aacharya	-	58-03-05-56	184.43	0.17	Carp	Personal	28.2572	81.3044
71	Badhaiya	Raghunath Ghimere	-	58-03-05-57	402.55	0.64	Carp	Personal	28.2572	81.3045
72	Badhaiya	Sarwajanik Talau	-	58-03-05-58	1,460.61	6.86	Carp	Personal	28.2573	81.3046
73	Badhaiya	Goleram Tharu	-	58-03-05-60	189.63	0.16	Carp	Personal	28.2574	81.3048
74	Badhaiya	Rohina Tharu	-	58-03-05-61	217.88	0.14	Carp	Personal	28.2575	81.3050
75	Badhaiya	Lohari Tharu	-	58-03-05-62	353.44	0.41	Carp	Personal	28.2576	81.3049
76	Badhaiya	Muktakamaiya Group	-	58-03-05-63	513.49	0.93	Carp	Personal	28.2576	81.3047
77	Badhaiya	Prakash Tharu	-	58-03-05-64	411.95	0.96	Carp	Personal	28.2576	81.3047
78	Badhaiya	Golaram Tharu	-	58-03-05-65	509.33	0.91	Carp	Personal	28.2576	81.3046
79	Badhaiya	Jagraj Singh Tharu	-	58-03-05-66	680.75	1.42	Carp	Personal	28.2566	81.3057
80	Badhaiya	Ramlal Tharu	-	58-03-05-67	855.39	3.05	Carp	Personal	28.2566	81.3057
81	Badhaiya	Ram Lapton Tharu	-	58-03-05-68	412.48	0.98	Carp	Personal	28.2564	81.3055
82	Badhaiya	Gopal Tharu	-	58-03-05-69	570.63	1.45	Carp	Personal	28.2561	81.3053
83	Badhaiya	Merrallal Tharu	-	58-03-05-70	911.24	1.73	Carp	Personal	28.2559	81.3051
84	Badhaiya	Ujjowal Magar	-	58-03-05-71	383.84	0.54	Carp	Personal	28.2559	81.3051
85	Badhaiya	Govinda Tharu	-	58-03-05-72	238.40	0.29	Carp	Personal	28.2557	81.3050
86	Badhaiya	Dashrath Tharu	-	58-03-05-73	722.79	2.17	Carp	Personal	28.2556	81.3052
87	Badhaiya	Baliram Tharu	-	58-03-05-75	677.63	1.55	Carp	Personal	28.2556	81.3052
88	Badhaiya	Saraswoti Ma. Vi.	-	58-03-05-76	567.87	1.65	Carp	Government	28.2556	81.3053
89	Badhaiya	Hariram Tharu	-	58-03-05-77	486.79	0.80	Carp	Personal	28.2556	81.3053
90	Badhaiya	Asharam Tharu	-	58-03-05-78	678.36	1.63	Carp	Personal	28.2556	81.3053
91	Badhaiya	Pardeep Giri	-	58-03-05-79	120.36	0.08	Carp	Personal	28.2556	81.3054

S.No.	VDC/Municipality	Name of the farmer	cell number	Code No.	Perimeter(m)	Water surface area(Ha)	Culture System	Ownership	Latitude	Longitude
92	Badhaiya	Racharam Tharu	-	58-03-05-80	146.62	0.11	Carp	Personal	28.2556	81.3054
93	Badhaiya	Kalicharan Tharu	-	58-03-05-81	331.62	0.60	Carp	Personal	28.2556	81.3054
94	Badhaiya	Kedar Rijal	-	58-03-05-82	138.99	0.11	Carp	Personal	28.2557	81.3054
95	Badhaiya	Sudipi Subedi	-	58-03-05-83	415.38	0.46	Carp	Personal	28.2558	81.3055
96	Badhaiya	Krishna Parswal	-	58-03-05-84	437.75	0.72	Carp	Personal	28.2559	81.3056
97	Badhaiya	Gampati Rijal	-	58-03-05-85	365.03	0.63	Carp	Personal	28.2559	81.3058
98	Badhaiya	Dev Sharma Rijal	-	58-03-05-86	222.82	0.24	Carp	Personal	28.2559	81.3058
99	Badhaiya	Guru Psd. Kharel	-	58-03-05-87	230.16	0.27	Carp	Personal	28.2560	81.3060
100	Badhaiya	Kamala Gautam	-	58-03-05-88	417.66	0.98	Carp	Personal	28.2560	81.3060
101	Badhaiya	Lohari Tharu	-	58-03-05-89	94.63	0.05	Carp	Personal	28.2562	81.3061
102	Badhaiya	Puspa Bhusal	-	58-03-05-90	568.16	1.56	others	Personal	28.2561	81.3062
103	Badhaiya	Rampal Tharu	-	58-03-05-91	228.47	0.25	carp	Personal	28.2561	81.3063
104	Badhaiya	Laximiram Tharu	-	58-03-05-92	534.86	1.07	carp	Personal	28.2561	81.3063
105	Badhaiya	Chadita Bhusal	-	58-03-05-93	1,358.20	7.80	carp	Personal	28.2562	81.3064
106	Badhaiya	Surendra Tharu	-	58-03-05-94	449.14	1.01	carp	Personal	28.2563	81.3064
107	Badhaiya	Kaman Singh Tharu	-	58-03-05-95	257.63	0.44	carp	Personal	28.2566	81.3061
108	Badhaiya	Gampati Rijal	-	58-03-05-96	149.93	0.12	carp	Personal	28.2567	81.3058
109	Badhaiya	Baburam Subedi	-	58-03-05-97	292.53	0.46	carp	Personal	28.2566	81.3057
110	Badhaiya	Baliram Tharu	-	58-03-05-98	279.80	0.33	carp	Personal	28.1993	81.4922
111	Badhaiya	Ananda Giri	-	58-03-05-99	159.41	0.14	carp	Personal	28.1993	81.4920
112	Badhaiya	Banda Ram Tharu	-	58-03-05-100	278.11	0.31	carp	Personal	28.1992	81.4918
113	Badhaiya	Shova Bhusal	-	58-03-05-101	416.53	0.84	carp	Personal	28.1990	81.4917
114	Badhaiya	Minraj pangen	-	58-03-05-102	423.73	0.88	carp	Personal	28.1987	81.4916
115	Badhaiya	Toyanath Bhusal	-	58-03-05-103	765.62	3.29	carp	Personal	28.1987	81.4915
116	Badhaiya	Satya Karan Tharu	-	58-03-05-104	863.96	3.39	carp	Personal	28.1985	81.4914
117	Badhaiya	Harikusum Tharu	-	58-03-05-105	305.95	0.52	carp	Personal	28.1984	81.4914
118	Badhaiya	Kirpiram Tharu	-	58-03-05-106	675.25	2.21	carp	Personal	28.1983	81.4915
119	Badhaiya	Ram Prakash Tharu	-	58-03-05-107	3,597.22	52.13	carp	Personal	28.1982	81.4917
120	Badhaiya	Chadaram Tharu	-	58-03-05-108	348.04	0.50	carp	Personal	28.1982	81.4919
121	Badhaiya	Gyan Jyoti Ma. Vi.	-	58-03-05-109	674.37	2.48	carp	Government	28.2047	81.5115
122	Badhaiya	Sudrashan Chand	-	58-03-05-110	909.27	2.94	others	Personal	28.1987	81.4921
123	Badhaiya	Mishree Lal	-	58-03-05-111	305.41	0.28	others	Personal	28.1988	81.4923
124	Badhaiya	Bed Prakash	-	58-03-05-112	267.89	0.39	others	Personal	28.1989	81.4922
125	Badhaiya	Badaiya Lake	-	58-03-05-113	448.41	1.07	carp	Government	28.1991	81.4923
126	Badhaiya	Sarada Ma.Vi.	-	58-03-05-114	240.31	0.32	carp	Government	28.1992	81.4922

S.No.	VDC/Municipality	Name of the farmer	cell number	Code No.	Perimeter(m)	Water surface area(Ha)	Culture System	Ownership	Latitude	Longitude
127	Badhaiya	Hari tandon	-	58-03-05-115	559.29	0.92	carp	Personal	28.1993	81.4922
128	Badhaiya	Ram Krishna Tharu	-	58-03-05-116	412.53	0.65	carp	Personal	28.2023	81.5024
129	Badhaiya	Nirmal Bhusal	-	58-03-05-117	343.55	0.45	carp	Personal	28.2023	81.5023
130	Badhaiya	Damodar Psd. Adhikari	-	58-03-05-118	220.49	0.31	carp	Personal	28.2024	81.5021
131	Badhaiya	Manoj Chaudary	-	58-03-05-119	387.36	0.62	carp	Personal	28.2026	81.5019
132	Badhaiya	Meyraj Tharu	-	58-03-05-120	370.37	0.56	carp	Personal	28.2026	81.5018
133	Badhaiya	Baburam Aryal	-	58-03-05-121	376.75	0.82	carp	Personal	28.2024	81.5018
134	Badhaiya	Fatte Bhdr. K.C	-	58-03-05-122	431.85	0.84	carp	Personal	28.2023	81.5017
135	Badhaiya	Milal Tharu	-	58-03-05-123	205.46	0.25	carp	Personal	28.2022	81.5016
136	Badhaiya	Jadu Tharu	-	58-03-05-124	225.67	0.26	carp	Personal	28.2021	81.5016
137	Badhaiya	Bhole Chaudary	-	58-03-05-125	139.40	0.11	carp	Personal	28.2020	81.5016
138	Badhaiya	Dan Bhdr. Thapa	-	58-03-05-126	516.13	0.98	carp	Personal	28.2018	81.5018
139	Badhaiya	Narayan Bhattarai	-	58-03-05-127	299.88	0.30	carp	Personal	28.2018	81.5019
140	Badhaiya	Bishnu Psd. Bhandari	-	58-03-05-128	187.56	0.13	carp	Personal	28.2017	81.5019
141	Badhaiya	Loknath Bhattari	-	58-03-05-129	160.37	0.15	carp	Personal	28.2017	81.5020
142	Badhaiya	Tanka Psd. Bhattarai	-	58-03-05-130	280.69	0.47	carp	Personal	28.2017	81.5021
143	Badhaiya	Tanka Psd. Bhattarai	-	58-03-05-130	121.01	0.08	carp	Personal	28.2019	81.5022
144	Badhaiya	Raju B.K	-	58-03-05-131	184.37	0.17	carp	Personal	28.2021	81.5024
145	Badhaiya	Ram Kmr. B.K	-	58-03-05-132	281.73	0.36	carp	Personal	28.2023	81.5024
Total area(ha) in Badhaiya						138.17				
146	Thakurbaba	Naba Raj Rijal	-	58-04-05-137	601.78	1.89	carp	Personal	28.2027	81.5030
147	Thakurbaba	Pitamber Sharma	-	58-04-05-138	295.17	0.30	carp	Personal	28.2029	81.5032
148	Thakurbaba	Dhurba Raj Bam	-	58-04-05-139	312.77	0.48	carp	Personal	28.2032	81.5034
149	Thakurbaba	Ramesh Sahi	-	58-04-05-140	286.35	0.37	carp	Personal	28.2036	81.5035
150	Thakurbaba	Gita Khadka	-	58-04-05-141	183.18	0.18	carp	Personal	28.2037	81.5034
151	Thakurbaba	Rabindra Shah	-	58-04-05-142	321.28	0.37	carp	Personal	28.2037	81.5034
152	Thakurbaba	Man Bhdr. Tharu	-	58-04-03-143	272.23	0.21	carp	Personal	28.2037	81.5034
153	Thakurbaba	Bijay Shah	-	58-04-03-144	104.18	0.05	carp	Personal	28.2037	81.5031
154	Thakurbaba	Manoj Shah	-	58-04-03-145	114.19	0.06	carp	Personal	28.2038	81.5026
155	Thakurbaba	Prakash Shah	-	58-04-03-146	135.58	0.10	carp	Personal	28.2037	81.5024
156	Thakurbaba	Yubaraj Shah	-	58-04-03-147	95.10	0.06	carp	Personal	28.2034	81.5023
157	Thakurbaba	Geddulal Tharu	-	58-04-03-148	122.55	0.08	carp	Personal	28.2033	81.5023
158	Thakurbaba	Bir Bhdr Kusma	-	58-04-05-149	587.14	1.48	carp	Personal	28.2032	81.5023

S.No.	VDC/Municipality	Name of the farmer	cell number	Code No.	Perimeter(m)	Water surface area(Ha)	Culture System	Ownership	Latitude	Longitude
159	Thakurbaba	Himalaya Sahakari Sastha	-	58-04-05-150	139.40	0.10	carp	Personal	28.2033	81.5021
160	Thakurbaba	Sitaram Tharu	-	58-04-05-151	80.77	0.03	carp	Personal	28.2032	81.5020
161	Thakurbaba	Jeevan Sahi	-	58-04-05-152	607.56	1.34	carp	Personal	28.2030	81.5020
162	Thakurbaba	Usha Sharma	-	58-04-04-153	188.83	0.19	carp	Personal	28.2029	81.5023
163	Thakurbaba	Laxmi Bhandari	-	58-04-04-154	106.69	0.07	carp	Personal	28.2030	81.5024
164	Thakurbaba	Sagar Sharma	-	58-04-04-155	146.08	0.10	carp	Personal	28.2030	81.5024
165	Thakurbaba	Gajendra Bhdr. Shah	-	58-04-04-156	199.23	0.24	carp	Personal	28.2028	81.5025
166	Thakurbaba	Jagatram Tharu	-	58-04-04-157	197.62	0.21	carp	Personal	28.2027	81.5026
167	Thakurbaba	Santaram Tharu	-	58-04-04-158	134.14	0.11	carp	Personal	28.2010	81.5040
168	Thakurbaba	Chedhu Tharu	-	58-04-04-159	133.96	0.08	carp	Personal	28.2010	81.5038
169	Thakurbaba	Danbir Tharu	-	58-04-04-160	112.82	0.07	carp	Personal	28.2012	81.5036
170	Thakurbaba	Manbir Tharu	-	58-04-04-161	111.66	0.06	carp	Personal	28.2013	81.5035
171	Thakurbaba	Kashi Chaudary	-	58-04-04-162	162.95	0.11	carp	Personal	28.2015	81.5036
172	Thakurbaba	Parlad Chaudary	-	58-04-04-163	80.74	0.03	carp	Personal	28.2016	81.5034
173	Thakurbaba	Tilak Lamsal	-	58-04-04-164	264.14	0.32	carp	Personal	28.2018	81.5032
174	Thakurbaba	Ram Bharosi Tharu	-	58-04-04-165	79.66	0.04	carp	Personal	28.2021	81.5028
175	Thakurbaba	Bal Bhdr. Tharu	-	58-04-04-166	130.84	0.10	carp	Personal	28.2022	81.5027
176	Thakurbaba	Lokendra Psd. Tharu	-	58-04-04-167	132.71	0.08	carp	Personal	28.2022	81.5025
177	Thakurbaba	Jugram Tharu	-	58-04-04-168	74.61	0.03	carp	Personal	28.2021	81.5024
178	Thakurbaba	Paniya Tharu	-	58-04-04-169	101.35	0.04	carp	Personal	28.2019	81.5023
179	Thakurbaba	Raj Kmr. Shrestha	-	58-04-04-170	79.59	0.03	carp	Personal	28.2018	81.5022
180	Thakurbaba	Bam Bhdr. Hamal	-	58-04-04-171	113.80	0.08	carp	Personal	28.2017	81.5021
181	Thakurbaba	Niraj Tharu	-	58-04-04-172	200.62	0.24	carp	Personal	28.2016	81.5021
182	Thakurbaba	Vikhu Tharu	-	58-04-05-175	229.68	0.22	carp	Personal	28.2013	81.5023
183	Thakurbaba	Kantu Tharu	-	58-04-05-176	151.37	0.13	carp	Personal	28.2012	81.5023
184	Thakurbaba	Faguram Tharu	-	58-04-05-177	175.53	0.10	carp	Personal	28.2011	81.5023
185	Thakurbaba	Paitram Tharu	-	58-04-05-178	161.60	0.10	carp	Personal	28.2010	81.5023
186	Thakurbaba	Chyalturam Tharu	-	58-04-05-179	91.00	0.05	carp	Personal	28.2010	81.5024
187	Thakurbaba	Gotulal Tharu	-	58-04-05-180	69.47	0.02	carp	Personal	28.2009	81.5024
188	Thakurbaba	Gomati Psd. Tharu	-	58-04-05-181	98.62	0.05	carp	Personal	28.2008	81.5026
189	Thakurbaba	Puran Lal Tharu	-	58-04-05-182	70.89	0.03	carp	Personal	28.2008	81.5026
190	Thakurbaba	Kalicharan Tharu	-	58-04-05-183	155.41	0.11	carp	Personal	28.2009	81.5027
191	Thakurbaba	Gore Tharu	-	58-04-05-184	187.49	0.23	carp	Personal	28.2011	81.5028
192	Thakurbaba	Dauna Tharu	-	58-04-05-185	177.70	0.15	carp	Personal	28.2011	81.5028

S.No.	VDC/Municipality	Name of the farmer	cell number	Code No.	Perimeter(m)	Water surface area(Ha)	Culture System	Ownership	Latitude	Longitude
193	Thakurbaba	Lariana Tharu	-	58-04-05-186	199.57	0.25	carp	Personal	28.2011	81.5029
194	Thakurbaba	Guru Charan Tharu	-	58-04-05-187	74.50	0.03	carp	Personal	28.2011	81.5029
195	Thakurbaba	Kali Psd. Tharu	-	58-04-05-188	59.91	0.02	carp	Personal	28.2011	81.5030
196	Thakurbaba	Dakehar Tharu	-	58-04-05-189	89.50	0.04	carp	Personal	28.2010	81.5031
197	Thakurbaba	Saniram Tharu	-	58-04-05-190	91.06	0.04	carp	Personal	28.2009	81.5032
198	Thakurbaba	Daniram Tharu	-	58-04-05-191	114.07	0.06	carp	Personal	28.2008	81.5033
199	Thakurbaba	Rabinder Swar	-	58-04-05-192	132.06	0.10	carp	Personal	28.2007	81.5035
200	Thakurbaba	Agni Chaudary	-	58-04-05-193	90.86	0.05	carp	Personal	28.2007	81.5037
201	Thakurbaba	Rabin Kmr. Baidya	-	58-04-05-194	180.29	0.18	carp	Personal	28.2006	81.5038
202	Thakurbaba	Samala Tharu	-	58-04-05-195	284.40	0.39	carp	Personal	28.2007	81.5040
203	Thakurbaba	Thagga Tharu	-	58-04-05-196	93.13	0.05	carp	Personal	28.2008	81.5041
204	Thakurbaba	Ram Kishore Tharu	-	58-04-05-197	205.56	0.21	carp	Personal	28.2008	81.5041
205	Thakurbaba	Deviram Tharu	-	58-04-05-198	75.77	0.03	carp	Personal	28.2009	81.5041
206	Thakurbaba	Bharat Tharu	-	58-04-05-199	114.05	0.06	carp	Personal	28.2010	81.5040
207	Thakurbaba	Kaluram Tharu	-	58-04-05-200	79.41	0.03	carp	Personal	28.2023	81.5016
208	Thakurbaba	Kalicharan Tharu	-	58-04-05-201	79.04	0.03	carp	Personal	28.2024	81.5017
209	Thakurbaba	Jaguram Tharu	-	58-04-05-202	84.85	0.04	carp	Personal	28.2025	81.5017
210	Thakurbaba	Paryojan Tharu	-	58-04-05-203	95.64	0.05	carp	Personal	28.2025	81.5017
211	Thakurbaba	Dulluram Tharu	-	58-04-05-204	88.07	0.04	carp	Personal	28.2026	81.5018
212	Thakurbaba	Ramkiran Tharu	-	58-04-05-205	138.30	0.10	carp	Personal	28.2028	81.5018
213	Thakurbaba	Krihna Tharu	-	58-04-05-206	147.96	0.12	carp	Personal	28.2028	81.5018
214	Thakurbaba	Rajendra Sharma	-	58-04-05-207	103.04	0.05	carp	Personal	28.2029	81.5019
215	Thakurbaba	Pitamber Panthi	-	58-04-05-208	96.41	0.05	carp	Personal	28.2029	81.5018
216	Thakurbaba	Neeraj Tharu	-	58-04-01-209	75.75	0.03	carp	Personal	28.2030	81.5017
217	Thakurbaba	Bhima Rokaya	-	58-04-07-210	77.50	0.03	carp	Personal	28.2030	81.5016
218	Thakurbaba	Amar Bhdr. Rokaya	-	58-04-07-211	100.19	0.06	carp	Personal	28.2031	81.5016
219	Thakurbaba	Magu Tharu	-	58-04-07-212	84.90	0.03	carp	Personal	28.2032	81.5016
220	Thakurbaba	Dhira Bhdr. Rawat	-	58-04-07-213	175.17	0.17	carp	Personal	28.2033	81.5017
221	Thakurbaba	Man Bhdr. Tharu	-	58-04-07-214	108.40	0.06	carp	Personal	28.2034	81.5016
222	Thakurbaba	Rana Bhdr. Bohora	-	58-04-07-215	270.47	0.32	carp	Personal	28.2036	81.5018
223	Thakurbaba	Mahesh Chaudary	-	58-04-08-216	429.32	0.81	carp	Personal	28.2038	81.5019
224	Thakurbaba	Nim Psd. Tharu	-	58-04-08-217	289.03	0.26	carp	Personal	28.2038	81.5017
225	Thakurbaba	Badri Khadka	-	58-04-07-218	513.98	1.12	carp	Personal	28.2038	81.5016
	Total area(ha) in Thakurbaba					15.45				
226	Bashghari	Krishna Bhdr. Bista	-	58-08-06-219	527.28	1.04	carp	Personal	28.2038	81.5016

S.No.	VDC/Municipality	Name of the farmer	cell number	Code No.	Perimeter(m)	Water surface area(Ha)	Culture System	Ownership	Latitude	Longitude
227	Bashghari	Maheshwor Acharya	-	58-08-06-220	625.26	0.96	carp	Personal	28.2037	81.5015
228	Bashghari	Kamal Kharel	-	58-08-06-221	821.00	3.25	carp	Personal	28.2036	81.5015
229	Bashghari	Kaman Singh Tharu	-	58-08-11-222	448.61	0.88	carp	Personal	28.2036	81.5013
230	Bashghari	Juntara Mahila Samuha	-	58-08-11-223	147.89	0.11	carp	Personal	28.2036	81.5013
231	Bashghari	Jyoti Bakhrapalan Samuha	-	58-08-11-224	203.33	0.23	carp	Personal	28.2035	81.5012
232	Basghari	Min Psd. Gurung	-	58-08-06-229	160.21	0.13	carp	Personal	28.2030	81.5011
233	Basghari	Laxman Gurung	-	58-08-06-230	232.55	0.28	carp	Personal	28.2030	81.5011
234	Basghari	Ykbhdr Gurung	-	58-08-09-231	99.32	0.05	carp	Personal	28.2029	81.5011
235	Basghari	Bal Bhdr. Bote	-	58-08-09-232	226.99	0.30	carp	Personal	28.2027	81.5012
236	Basghari	Tankanath Khanal	-	58-08-06-233	1,045.88	5.80	carp	Personal	28.2027	81.5012
237	Basghari	Geddharam Tharu	-	58-08-05-234	243.04	0.34	carp	Personal	28.2026	81.5012
238	Basghari	Sher Bhdr. Khatri	-	58-08-05-235	315.64	0.42	carp	Personal	28.2025	81.5012
239	Basghari	Jagat Bhdr. Rokaya	-	58-08-05-236	655.78	0.97	carp	Personal	28.2024	81.5013
240	Basghari	Dambar Bhdr. Oli	-	58-08-05-237	266.62	0.35	carp	Personal	28.2023	81.5014
241	Basghari	Tek Bhdr. Khatri(Jatiya tal)	-	58-08-04-238	1,906.73	7.60	carp	Government	28.2022	81.5015
242	Basghari	Dhan Bhdr. Thapa	-	58-08-04-239	888.02	2.07	carp	Personal	28.2022	81.5015
243	Basghari	Tek Bhdr. Oli	-	58-08-05-240	583.45	0.82	carp	Personal	28.2022	81.5016
244	Basghari	Nimaha tal	-	58-08-05-241	647.06	1.48	carp	Government	28.2023	81.5016
245	Basghari	Indreni Krishi Farm(Santa Chand)	-	58-08-05-242	514.70	0.99	carp	Personal	28.2038	81.5004
246	Basghari	Lohari Tharu	-	58-08-05-243	535.61	0.80	carp	Personal	28.2037	81.5002
247	Basghari	Mahindra Tharu	-	58-08-05-244	353.81	0.61	carp	Personal	28.2036	81.5000
	Total area(ha) in Basghari					29.45				
248	Madhuwan	Prativa Rana	-	58-05-04-173	273.86	0.36	carp	Personal	28.2015	81.5021
249	Madhuwan	Raghav Chandra Bhdr. Singh	-	58-05-04-174	282.82	0.41	carp	Personal	28.2015	81.5022
	Total area(ha) in Madhuwan					0.77				
250	Rajapur	Shree Sapana Mahila Samuha	-	58-06-08-245	612.69	1.45	carp	Personal	28.2036	81.5000
251	Rajapur	Prakash Tharu	-	58-06-08-246	603.02	0.79	carp	Personal	28.2035	81.4999
252	Rajapur	Ram Bhdr. Chaudary	-	58-06-05-247	167.23	0.14	carp	Personal	28.2034	81.4998

S.No.	VDC/Municipality	Name of the farmer	cell number	Code No.	Perimeter(m)	Water surface area(Ha)	Culture System	Ownership	Latitude	Longitude
253	Rajapur	Khusiram Tharu	-	58-06-05-248	132.53	0.09	carp	Personal	28.2032	81.4999
254	Rajapur	Badalpur Sarwajanik Talau	-	58-06-05-249	387.72	0.73	carp	Government	28.2031	81.5001
255	Rajapur	Asharam chaudary	-	58-06-05-250	100.26	0.06	carp	Personal	28.2030	81.5001
256	Rjapur	Shiva Raj Subedi	-	58-06-04-262	146.17	0.12	carp	Personal	28.2061	81.5119
257	Rajapur	Krishna Psd. Chaudary	-	58-06-05-251	259.45	0.33	carp	Personal	28.2030	81.5002
258	Rajapur	Sanjay Shah	-	58-06-02-252	202.45	0.18	carp	Personal	28.2029	81.5005
	Total area(ha) in Rajapur					3.90				
259	Gerruwa	Gyanu Tharu	-	58-07-06-253	177.98	0.18	carp	Personal	28.2028	81.5006
260	Gerruwa	Buddiram Tharu B	-	58-07-05-254	169.69	0.12	carp	Personal	28.2028	81.5007
261	Gerruwa	Buddiram Tharu A	-	58-07-05-255	111.81	0.06	carp	Personal	28.2028	81.5008
262	Gerruwa	Krishna Tharu	-	58-07-05-256	492.31	0.80	carp	Personal	28.2027	81.5008
263	Gerruwa	Khusiram Tharu	-	58-07-05-257	333.30	0.45	carp	Personal	28.2027	81.5008
264	Gerruwa	Roshan Chalaune	-	58-07-03-258	198.52	0.16	carp	Personal	28.2027	81.5008
265	Gerruwa	Bharatram Chaudary	-	58-07-02-259	78.77	0.04	carp	Personal	28.2025	81.5007
266	Gerruwa	Hotuwa Tharu	-	58-07-02-260	152.74	0.13	carp	Personal	28.2025	81.5006
267	Gerruwa	Sudip Singh Rathore	-	58-07-02-261	90.27	0.05	carp	Personal	28.2025	81.5007
	Total area(ha) in Gerruwa					1.98				
				Total area in hectare		363.23				

Distribution of ponds in Kailali Districts

S. No.	Name of the farmer	VDC/Municipality	Code No.	Latitude	Longitude	Ownership	Water surface area(Ha)	perimeter(m)	Culture Sustum
1	Sanjibini Herb And Agro Pvt.Ltd	Dhangadi Municipality-01'	71_01_01_01	28.770	80.721	Personal	1.39	5965.39	Carp
2	Lammi Tal	Dhangadi Municipality-06'	71_01_01_53	28.665	80.973	Government/Samudayek	0.26	1105.57	Carp
3	Kohilahi Tal	Dhangadi Municipality-06'	71_01_01_54	28.647	80.745	Government/Samudayek	0.49	2119.46	Carp
4	Surkhiya Tal	Dhangadi Municipality-06'	71_01_01_55	28.670	80.980	Government/Samudayek	13.90	59760.24	Carp
5	Nathuniya Tal	Dhangadi Municipality-06'	71_01_01_56	28.550	80.823	Government/Samudayek	2.40	10331.49	Carp
6	Neharty Tal	Dhangadi Municipality-06'	71_01_01_57	28.550	80.823	Government/Samudayek	2.58	11090.04	Carp
7	Jokkhar Tal	Dhangadi Municipality-07'	71_01_01_58	28.480	80.928	Government/Samudayek	1.39	5965.39	Carp
8	Murfuttu Tal	Dhangadi Municipality-06'	71_01_01_59	28.480	80.928	Government/Samudayek	0.21	922.54	Carp
9	Murkuttu Tal	Dhangadi Municipality-06'	71_01_01_60	28.593	80.778	Government/Samudayek	0.14	585.90	Carp
10	Ntani Katani Tal	Dhangadi Municipality-06'	71_01_01_61	28.637	80.738	Government/Samudayek	2.59	11143.32	Carp
11	Sukuti Tal	Dhangadi Municipality-06'	71_01_01_62	28.666	80.959	Government/Samudayek	0.31	1312.62	Carp
12	Chokti Nathuniya Tal	Dhangadi Municipality-06'	71_01_01_63	28.637	80.738	Government/Samudayek	1.10	4715.09	Carp
13	Uttar Bedahi Tal	Dhangadi Municipality-06'	71_01_01_64	28.770	80.721	Government/Samudayek	0.10	450.57	Carp
14	Ghegdua Tal	Dhangadi Municipality-06'	71_01_01_65	28.709	80.728	Government/Samudayek	10.95	47075.96	Carp
15	Chaupheri Tal	Dhangadi Municipality-14'	71_01_01_66	28.707	80.738	Government/Samudayek	1.12	4827.42	Carp
16	Dev Tal	Dhangadi Municipality-17'	71_01_01_67	28.740	80.572	Government/Samudayek	1.82	7827.75	Carp
17	Tilke Tal	Dhangadi Municipality-12'	71_01_01_68	28.695	80.591	Government/Samudayek	0.91	3895.67	Carp
18	Tin Khande Tal	Dhangadi Municipality-12'	71_01_01_69	28.707	80.621	Government/Samudayek	6.45	27730.59	Carp
19	Total water surface area in (Ha) in Dhangadi Municipality						48.10		
20	Ramesh Bd Sahi	Chaumala 4 , Bhojpur	71_01_01_02	28.709	80.728	Personal	0.21	922.54	Carp
21	Padam Bd Chaudhary	Urma 8 ,Bhada	71_01_01_03	28.707	80.738	Personal	0.14	585.90	Carp
22	Bheda Baba Tal	Urma 4	71_01_01_169	28.536	80.847	Government/Samudayek	13.90	59760.24	Carp
23	Saha Dev Tal	Urma 4	71_01_01_170	28.603	80.826	Government/Samudayek	2.40	10331.49	Carp
24	Ramsammargra Tal	Urma5	71_01_01_171	28.627	80.814	Government/Samudayek	2.58	11090.04	Carp
25	Chakaii Tal	Urma 8	71_01_01_172	28.637	80.738	Government/Samudayek	1.39	5965.39	Carp
26	Makhar Tal	Urma 2	71_01_01_173	28.616	80.816	Government/Samudayek	0.21	922.54	Carp
27	Kusum Tal	Urma 2	71_01_01_174	28.679	80.971	Government/Samudayek	0.14	585.90	Carp
28	Chetram Chaudhary	Urma 8 ,Bhada	71_01_01_10	28.729	80.620	Personal	1.82	7827.75	Carp
29	Total water surface area in (Ha) in Urma						22.57		
30	Dhan Bd Chetri	Durgaulli 2 Bhagatpur	71_01_01_04	28.740	80.572	Personal	2.59	11143.32	Carp
31	Khadka Bd Saud	Masuriya 1 Aandaiya	71_01_01_05	28.695	80.591	Personal	0.31	1312.62	Mangur
32	Nawadurga Agriculture	Aatariya 12 Geta	71_01_01_06	28.707	80.621	Personal	1.10	4715.09	Carp
33	Tak Bd Bohora	Chua 1 Ittabhatta	71_01_01_07	28.705	80.625	Personal	0.10	450.57	Pangas
34	Khadak Bd Mahato	Pratapur 1 Banabasa	71_01_01_08	28.720	80.624	Personal	10.95	47075.96	Carp

S. No.	Name of the farmer	VDC/Municipality	Code No.	Latitude	Longitude	Ownership	Water surface area(Ha)	perimeter(m)	Culture Systeem
35	Badayak Matshya Palan	Joshiapur 8 Ghusari	71_01_01_09	28.722	80.619	Personal	1.12	4827.42	Carp
36	Dirga Bd Thakulla	Dhana Singha Pur	71_01_01_11	28.670	80.979	Personal	0.91	3895.67	Carp
37	Dhana Bd Bhandari	Dhangadi 13	71_01_01_12	28.672	80.977	Personal	6.45	27730.59	Carp
38	Jalapa Devi Unnat Krishai Farm	Lamkhi Chua 7	71_01_01_13	28.672	80.977	Personal	1.67	7180.93	Carp
39	Maptiko Tal	Basauti 5	71_01_01_14	28.670	80.975	Government/Samudayek	0.30	1290.60	Carp
40	Murgi Tal	Basauti 8	71_01_01_16	28.637	80.738	Government/Samudayek	0.58	2478.13	Carp
41	Motihari Tal	Basauti 2	71_01_01_17	28.662	80.970	Government/Samudayek	0.45	1940.71	Carp
42	Majaura Tal	Basauti 8	71_01_01_18	28.664	80.971	Government/Samudayek	6.94	29856.88	Carp
43	Matgrawa Tal	Basauti 9	71_01_01_19	28.671	80.977	Government/Samudayek	1.64	7035.10	Carp
44	Lalpura Tal	Basauti3	71_01_01_20	28.666	80.828	Government/Samudayek	0.82	3509.36	Carp
45	Mandran Tal	Basauti9	71_01_01_21	28.600	80.821	Government/Samudayek	0.34	1467.05	Carp
46	Laathua Tal	Basauti8	71_01_01_22	28.680	80.981	Government/Samudayek	12.11	52063.06	Carp
47	Sano Laathua Tal	Basauti 3	71_01_01_23	28.618	80.793	Government/Samudayek	1.72	7408.51	Carp
48	Hurraiya Tal	Basauti 8	71_01_01_24	28.663	80.796	Government/Samudayek	0.46	1965.66	Carp
49	Sano Huraiya Tal	Basauti 8	71_01_01_25	28.572	80.777	Government/Samudayek	0.21	919.20	Carp
50	Danga Tal	Basauti 4	71_01_01_26	28.571	80.777	Government/Samudayek	8.88	38167.44	Carp
51	Total water surface area in (Ha) in Basauti						34.44		
52	Bhagan Pura Tal	Pabera 7	71_01_01_27	28.571	80.777	Government/Samudayek	0.30	1269.40	Carp
53	Badka Magahar Tal	Pabera 2	71_01_01_28	28.585	80.906	Government/Samudayek	29.30	125976.32	Carp
54	Chamriya Tal	Pasauri 2	71_01_01_15	28.670	80.975	Government/Samudayek	1.20	5143.55	Carp
55	Chotki Gulariya Tal	Pabera 2	71_01_01_29	28.585	80.906	Government/Samudayek	1.31	5638.28	Carp
56	Chotki Maghar Tal	Pabera 2	71_01_01_30	28.632	80.816	Government/Samudayek	0.04	172.10	Carp
57	Rakhauna Tal	Pabera 6	71_01_01_31	28.632	80.816	Government/Samudayek	0.30	1277.70	Carp
58	Jabdahuha Tal	Pabera 4	71_01_01_32	28.547	80.808	Government/Samudayek	37.34	160581.10	Carp
59	Total water surface area in (Ha) in Pabera						69.78		
60	Puraina Tal	Hasuliya 6	71_01_01_33	28.571	80.776	Government/Samudayek	2.78	11964.50	Carp
61	Jhigarhua Tal	Hasuliya 5	71_01_01_34	28.687	80.769	Government/Samudayek	9.02	38764.61	Carp
62	Lokiniya Tal	Hasuliya 5	71_01_01_35	28.529	80.872	Government/Samudayek	0.48	2049.59	Carp
63	Kamal Pokhari Tal	Hasuliya 1	71_01_01_36	28.610	80.781	Government/Samudayek	24.82	106738.42	Carp
64	Rakhauli Tal	Hasuliya 9	71_01_01_37	28.658	81.010	Government/Samudayek	0.73	3129.93	Carp
65	Bhajaniya Tal	Hasuliya 8	71_01_01_38	28.658	81.009	Government/Samudayek	0.06	277.35	Carp
66	Bhulkahawa Tal	Hasuliya 8	71_01_01_39	28.521	80.878	Government/Samudayek	30.28	130217.27	Carp
67	Chotki Jana Neheta Tal	Hasuliya 8	71_01_01_40	28.431	81.042	Government/Samudayek	0.84	3611.68	Carp
68	Ghar Kutua Tal	Hasuliya 8	71_01_01_41	28.593	80.788	Government/Samudayek	14.81	63664.10	Carp
69	Jhyala Tal	Hasuliya 8	71_01_01_42	28.569	80.906	Government/Samudayek	0.79	3381.58	Carp
70	Gularua Tal	Hasuliya 4	71_01_01_43	28.536	80.847	Government/Samudayek	0.04	190.17	Carp

S. No.	Name of the farmer	VDC/Municipality	Code No.	Latitude	Longitude	Ownership	Water surface area(Ha)	perimeter(m)	Culture Systeem
71	Pueeda Tal	Hasuliya 8	71_01_01_44	28.603	80.826	Government/Samudayek	1.98	8501.12	Carp
72	Total water surface area in (Ha) in Hasuliya						86.63		
73	Khairahawa Tal	Ratnapur 6	71_01_01_45	28.627	80.814	Government/Samudayek	0.66	2818.32	Carp
74	Late Kutauha Tal	Ratnapur 6	71_01_01_46	28.637	80.738	Government/Samudayek	0.33	1426.48	Carp
75	Magahar Tal	Ratnapur 2	71_01_01_47	28.616	80.816	Government/Samudayek	0.06	266.15	Carp
76	Sweety Tal	Ratanpur 5	71_01_01_48	28.679	80.971	Government/Samudayek	3.50	15045.08	Carp
77	Paktharya Tal	Ratanpur 7	71_01_01_49	28.603	81.006	Government/Samudayek	1.51	6501.19	Carp
78	Karluha Tal	Ratnapur 7	71_01_01_50	28.609	81.122	Government/Samudayek	0.26	1125.03	Carp
79	Dodraiya Tal	Ratanpnur 7	71_01_01_51	28.639	80.744	Government/Samudayek	2.28	9809.15	Carp
80	Sigua Tal	Ratnapur 4	71_01_01_52	28.551	80.848	Government/Samudayek	0.47	2021.32	Carp
81	Total water surface area in (Ha) in Ratnapur						9.07		
82	Shree Kedarnath Ghol	Joshiapur 9	71_01_01_70	28.705	80.625	Government/Samudayek	1.67	7180.93	Carp
83	Mithuniya Tal	Joshiapur 9	71_01_01_71	28.720	80.624	Government/Samudayek	0.30	1290.60	Carp
84	Jaglinath Manthi Tal	Joshiapur 3	71_01_01_72	28.722	80.619	Government/Samudayek	1.20	5143.55	Carp
85	Shankar Samudaya Tal	Joshiapur 3	71_01_01_73	28.729	80.620	Government/Samudayek	0.58	2478.13	Carp
86	Prerara Tal	Joshiapur 3	71_01_01_74	28.670	80.979	Government/Samudayek	0.45	1940.71	Carp
87	Jangalisath Samudaikk Ban Ghol	Joshiapur 3	71_01_01_75	28.672	80.977	Government/Samudayek	6.94	29856.88	Carp
88	Total water surface area in (Ha) in Joshipur						11.14		
89	Baherua Ghol	Bauniya 5	71_01_01_76	28.672	80.977	Government/Samudayek	1.64	7035.10	Carp
90	Khaladashin Ghol	Bauniya 4	71_01_01_77	28.670	80.975	Government/Samudayek	0.82	3509.36	Carp
91	Utter Purba Chairiya Tal	Bauniya 4	71_01_01_78	28.670	80.975	Government/Samudayek	0.34	1467.05	Carp
92	Total water surface area in (Ha) in Bauniya						2.79		
93	Trisakti Samudaik Tal	Balea 8	71_01_01_79	28.637	80.738	Government/Samudayek	12.11	52063.06	Carp
94	Mohan Lal Samu Tal	Balea 6	71_01_01_80	28.662	80.970	Government/Samudayek	1.72	7408.51	Carp
95	Total water surface area in (Ha) in Balea						13.83		
96	Sarbajinaik Tal	Kota Tulsipur	71_01_01_81	28.664	80.971	Government/Samudayek	0.46	1965.66	Carp
97	Purniya Tal	Kota Tulsipur	71_01_01_82	28.671	80.977	Government/Samudayek	0.21	919.20	Carp
98	Bhurua Tal	Kota Tulsipur 9	71_01_01_83	28.666	80.828	Government/Samudayek	8.88	38167.44	Carp
99	Bhurua Tal	Kota Tulsipur 8	71_01_01_84	28.600	80.821	Government/Samudayek	0.30	1269.40	Carp
100	Kapa Tal	Kota Tulsipur 2	71_01_01_85	28.680	80.981	Government/Samudayek	29.30	125976.32	Carp
101	Jagat Pur	Kota Tulsipur 6	71_01_01_86	28.618	80.793	Government/Samudayek	1.31	5638.28	Carp
102	Total water surface area in (Ha) in Kota tulsipur						40.45		
103	Lamki Tal	Ramsikhar Jahal 7	71_01_01_87	28.663	80.796	Government/Samudayek	0.04	172.10	Carp
104	Purauna Tal	Ramsikhar Jahal 8	71_01_01_88	28.572	80.777	Government/Samudayek	0.30	1277.70	Carp
105	Badhan Tal	Ramsikhar Jahal 9	71_01_01_89	28.571	80.777	Government/Samudayek	37.34	160581.10	Carp
106	Hattikunda Tal	Ramsikhar Jahal 8	71_01_01_90	28.571	80.777	Government/Samudayek	2.78	11964.50	Carp

S. No.	Name of the farmer	VDC/Municipality	Code No.	Latitude	Longitude	Ownership	Water surface area(Ha)	perimeter(m)	Culture Systeem
107	Pasupati Tal	Ramsikhar Jahal 3	71_01_01_91	28.585	80.906	Government/Samudayek	9.02	38764.61	Carp
108	Tedi Tal	Ramsikhar Jahal 7	71_01_01_92	28.585	80.906	Government/Samudayek	0.48	2049.59	Carp
109	Persani Tal	Ramsikhar Jahal 7	71_01_01_93	28.632	80.816	Government/Samudayek	24.82	106738.42	Carp
110	Materi Tal	Ramsikhar Jahal 7	71_01_01_94	28.632	80.816	Government/Samudayek	0.73	3129.93	Carp
111	Bhhum Kawat Tal	Ramsikhar Jahal 8	71_01_01_95	28.547	80.808	Government/Samudayek	0.06	277.35	Carp
112	Bhumkai Tal	Ramsikhar Jahal 9	71_01_01_96	28.571	80.776	Government/Samudayek	30.28	130217.27	Carp
113	Sheru Kaliya Tal	Ramsikhar Jahal 9	71_01_01_97	28.687	80.769	Government/Samudayek	0.84	3611.68	Carp
114	Total water surface area in (Ha) in Ramsikhar Jahal						106.69		
115	Pawari Tal	SANDEPANI 3	71_01_01_98	28.529	80.872	Government/Samudayek	14.81	63664.10	Carp
116	Bhalu Tal	SANDEPANI2	71_01_01_99	28.610	80.781	Government/Samudayek	0.79	3381.58	Carp
117	Mauwa Tal	SANDEPANI3	71_01_01_100	28.658	81.010	Government/Samudayek	0.04	190.17	Carp
118	Wichky Tal	SANDEPANI3	71_01_01_101	28.658	81.009	Government/Samudayek	1.98	8501.12	Carp
119	Durbaja Tal	SANDEPANI3	71_01_01_102	28.521	80.878	Government/Samudayek	0.66	2818.32	Carp
120	Sangruha Tal	SANDEPANI3	71_01_01_103	28.431	81.042	Government/Samudayek	0.33	1426.48	Carp
121	Aauraha Tal	SANDEPANI33	71_01_01_104	28.593	80.788	Government/Samudayek	0.06	266.15	Carp
122	Gudua Tal	SANDEPANI3	71_01_01_105	28.569	80.906	Government/Samudayek	3.50	15045.08	Carp
123	Sundar Tal	SANDEPANI3	71_01_01_106	28.536	80.847	Government/Samudayek	1.51	6501.19	Carp
124	Majhrua Tal	SANDEPANI	71_01_01_107	28.603	80.826	Government/Samudayek	0.26	1125.03	Carp
125	Chiripa Tal	SANDEPANI-04	71_01_01_108	28.627	80.814	Government/Samudayek	2.28	9809.15	Carp
126	Bagal Hawa Thulo Tal	SANDEPANI-01	71_01_01_109	28.637	80.738	Government/Samudayek	0.47	2021.32	Carp
127	Bagal Hawa Sano Tal	SANDEPANI-01	71_01_01_110	28.616	80.816	Government/Samudayek	0.26	1105.57	Carp
128	Khar Kuttua Tal	SANDEPANI-04	71_01_01_111	28.679	80.971	Government/Samudayek	0.49	2119.46	Carp
129	Patthar Pipla Tal	SANDEPANI-04	71_01_01_112	28.603	81.006	Government/Samudayek	13.90	59760.24	Carp
130	Puirena Tal	SANDEPANI-05	71_01_01_113	28.609	81.122	Government/Samudayek	2.40	10331.49	Carp
131	Maukatta Tal	SANDEPANI-04	71_01_01_114	28.639	80.744	Government/Samudayek	2.58	11090.04	Carp
132	Sigua Tal	SANDEPANI-09	71_01_01_115	28.551	80.848	Government/Samudayek	1.39	5965.39	Carp
133	Wawa Tal	SANDEPANI-09	71_01_01_116	28.665	80.973	Government/Samudayek	0.21	922.54	Carp
134	Sano Pokhari Tal	SANDEPANI-08	71_01_01_117	28.647	80.745	Government/Samudayek	0.14	585.90	Carp
135	Ramfal Tal	SANDEPANI-08	71_01_01_118	28.670	80.980	Government/Samudayek	2.59	11143.32	Carp
136	Whicky Tal	SANDEPANI-08	71_01_01_119	28.550	80.823	Government/Samudayek	0.31	1312.62	Carp
137	Budiya Tal	SANDEPANI-08	71_01_01_120	28.550	80.823	Government/Samudayek	1.10	4715.09	Carp
138	Khorahi Tal	SANDEPANI-08	71_01_01_121	28.480	80.928	Government/Samudayek	0.10	450.57	Carp
139	Somahawa Tal	SANDEPANI-08	71_01_01_122	28.480	80.928	Government/Samudayek	10.95	47075.96	Carp
140	Nakrol Tal	SANDEPANI-08	71_01_01_123	28.593	80.778	Government/Samudayek	1.12	4827.42	Carp
141	Botahi Tal	SANDEPANI-08	71_01_01_124	28.637	80.738	Government/Samudayek	1.82	7827.75	Carp
142	Total water surface area in (Ha) in Sandepani						66.04		

S. No.	Name of the farmer	VDC/Municipality	Code No.	Latitude	Longitude	Ownership	Water surface area(Ha)	perimeter(m)	Culture Systeem
143	Ghodaghodi Tal	Darakh 5	71_01_01_125	28.666	80.959	Government/Samudayek	0.91	3895.67	Carp
144	Ojhowa Tal	Darakh5	71_01_01_126	28.637	80.738	Government/Samudayek	6.45	27730.59	Mangur
145	Badka Charipal Tal	Darakh 5	71_01_01_127	28.770	80.721	Government/Samudayek	1.67	7180.93	Carp
146	Maurahan Chariya Tal	Darakh 5	71_01_01_128	28.709	80.728	Government/Samudayek	0.30	1290.60	Carp
147	Ram Tal	Darakh 7	71_01_01_129	28.707	80.738	Government/Samudayek	1.20	5143.55	Carp
148	Total water surface area in (Ha) in Darakh						10.52		
149	Ghor Tal	Khailad 9	71_01_01_130	28.740	80.572	Government/Samudayek	0.58	2478.13	Carp
150	Laukaha Baukaha Tal	Khailad 8	71_01_01_131	28.695	80.591	Government/Samudayek	0.45	1940.71	Carp
151	Nukli Tal	Khailad 8	71_01_01_132	28.707	80.621	Government/Samudayek	6.94	29856.88	Carp
152	Soniya Tal	Khailad 8	71_01_01_133	28.705	80.625	Government/Samudayek	1.64	7035.10	Carp
153	Rupeya Tal	Khailad 8	71_01_01_134	28.720	80.624	Government/Samudayek	0.82	3509.36	Carp
154	Bhakari Tal	Khailad 3	71_01_01_135	28.722	80.619	Government/Samudayek	0.34	1467.05	Carp
155	Dodrahawa Tal	Khailad 8	71_01_01_136	28.729	80.620	Government/Samudayek	12.11	52063.06	Carp
156	Jermuna Tal	Khailad 6	71_01_01_137	28.670	80.979	Government/Samudayek	1.72	7408.51	Carp
157	Lamki Tal	Khailad 8	71_01_01_138	28.672	80.977	Government/Samudayek	0.46	1965.66	Carp
158	Dhobiniya Tal	Khailad 4	71_01_01_139	28.672	80.977	Government/Samudayek	0.21	919.20	Carp
159	Lal Pariya Tal	Khailad 1	71_01_01_140	28.670	80.975	Government/Samudayek	8.88	38167.44	Carp
160	Koltala Tal	Khailad 6	71_01_01_141	28.670	80.975	Government/Samudayek	0.30	1269.40	Carp
161	Dugrahawa Tal	Khailad 9	71_01_01_142	28.637	80.738	Government/Samudayek	29.30	125976.32	Carp
162	Khultim Ripari Tal	Khailad 2	71_01_01_143	28.662	80.970	Government/Samudayek	1.31	5638.28	Carp
163	Garmani Tal	Khailad 2	71_01_01_144	28.664	80.971	Government/Samudayek	0.04	172.10	Carp
164	Jhaljhaliya Tal	Khailad 6	71_01_01_145	28.671	80.977	Government/Samudayek	0.30	1277.70	Carp
165	Chutihak Tal	Khailad 8	71_01_01_146	28.666	80.828	Government/Samudayek	37.34	160581.10	Carp
166	Sosua Tal	Khailad 4	71_01_01_147	28.600	80.821	Government/Samudayek	2.78	11964.50	Carp
167	Cholraya Tal	Khailad 4	71_01_01_148	28.680	80.981	Government/Samudayek	9.02	38764.61	Carp
168	Chirahiya Tal	Khailad 8	71_01_01_149	28.618	80.793	Government/Samudayek	0.48	2049.59	Carp
169	Dokhanha Tal	Khailad 6	71_01_01_150	28.663	80.796	Government/Samudayek	24.82	7446.87	Carp
170	Bhathanchamka Tal	Khailad 5	71_01_01_151	28.572	80.777	Government/Samudayek	0.73	218.37	Carp
171	Dd Baini Tal	Kahailad 4	71_01_01_152	28.571	80.777	Government/Samudayek	0.06	277.35	Carp
172	Total water surface area in (Ha) in Kahailad						140.62		
173	Piparhua Tal	Lalbhoji 8 9	71_01_01_153	28.571	80.777	Government/Samudayek	30.28	130217.27	Carp
174	Godhua Tal	Lalbhoji 5	71_01_01_154	28.585	80.906	Government/Samudayek	0.84	3611.68	Carp
175	Khayer Matti Tal	Lalbhoji 5	71_01_01_155	28.585	80.906	Government/Samudayek	14.81	63664.10	Carp
176	Uohada Tal	Lalbhoji 6	71_01_01_156	28.632	80.816	Government/Samudayek	0.79	3381.58	Carp
177	Lakharya Tal	Lalbhoji 4	71_01_01_157	28.632	80.816	Government/Samudayek	0.04	190.17	Carp
178	Chamrauda Tal	Lalbhoji 4	71_01_01_158	28.547	80.808	Government/Samudayek	1.98	8501.12	Carp

S. No.	Name of the farmer	VDC/Municipality	Code No.	Latitude	Longitude	Ownership	Water surface area(Ha)	perimeter(m)	Culture Systeem
179	Bajhriya Tal	Lalbhoji 2	71_01_01_159	28.571	80.776	Government/Samudayek	0.66	2818.32	Carp
180	Puraina Tal	Lalbhoji 1	71_01_01_160	28.687	80.769	Government/Samudayek	0.33	1426.48	Carp
181	Pahala Tal	Lalbhoji 1	71_01_01_161	28.529	80.872	Government/Samudayek	0.06	266.15	Carp
182	Bansa Tal	Lalbhoji 1	71_01_01_162	28.610	80.781	Government/Samudayek	3.50	15045.08	Carp
183	Charra Tal	Lalbhoji 1	71_01_01_163	28.658	81.010	Government/Samudayek	1.51	6501.19	Carp
184	Garmahi Tal	Lalbhoji 1	71_01_01_164	28.658	81.009	Government/Samudayek	0.26	1125.03	Carp
185	Panmarna Tal	Lalbhoji 1	71_01_01_165	28.521	80.878	Government/Samudayek	2.28	9809.15	Carp
186	Khurda Tal	Lalbhoji 1	71_01_01_166	28.431	81.042	Government/Samudayek	0.47	2021.32	Carp
187	Total water surface area in (Ha) in Lalbhoji						57.81		
188	Duad Tal	Dasipur 7	71_01_01_167	28.593	80.788	Government/Samudayek	0.26	1105.57	Carp
189	Chamriya Tal	Udashipur 5	71_01_01_168	28.569	80.906	Government/Samudayek	0.49	2119.46	Carp
190	Latuhawa Tal	Bhajani 1	71_01_01_175	28.603	81.006	Government/Samudayek	2.59	11143.32	Carp
191	Tribani Tal	Chaumala 1	71_01_01_176	28.609	81.122	Government/Samudayek	0.31	1312.62	Carp
192	Rara Tal	Chaumala 1	71_01_01_177	28.639	80.744	Government/Samudayek	1.10	4715.09	Carp
193	Simi Tal	Chaumala 7	71_01_01_178	28.551	80.848	Government/Samudayek	0.10	450.57	Carp
194	Gauri Thimi Tal	Chaumala 1	71_01_01_179	28.665	80.973	Personal	10.95	47075.96	Carp
195	Lauri Tal	Chaumala 6	71_01_01_180	28.647	80.745	Personal	1.12	4827.42	Carp
196	Khairani Tal	Chaumala 6	71_01_01_181	28.670	80.980	Personal	1.82	7827.75	Carp
197	Materia Tal	Chaumala 6	71_01_01_182	28.550	80.823	Personal	0.91	3895.67	Carp
198	Malmanch Tal	Chaumala 6	71_01_01_183	28.550	80.823	Personal	6.45	27730.59	Carp
199	Total water surface area in (Ha) in Chaumala						22.45		
200	Shiva Tal	Fulbari 7	71_01_01_184	28.480	80.928	Personal	1.67	7180.93	Carp
201	Chuunchua Tal	Fulbari 1	71_01_01_185	28.480	80.928	Personal	0.30	1290.60	Carp
202	Puirena Tal	Fulbari 3	71_01_01_186	28.593	80.778	Government/Samudayek	1.20	5143.55	Carp
203	Takulle Tal	Fulbari 7	71_01_01_187	28.637	80.738	Government/Samudayek	0.58	2478.13	Carp
204	Sauniya Tal	Fulbari 1	71_01_01_188	28.666	80.959	Government/Samudayek	0.45	1940.71	Carp
205	Baktaiya Tal	Fulbari 8	71_01_01_189	28.637	80.738	Government/Samudayek	6.94	29856.88	Carp
206	Wastolata Tal	Fulbari 6	71_01_01_190	28.770	80.721	Government/Samudayek	1.64	7035.10	Carp
207	Sunhiya Tal	Fulbari 1	71_01_01_191	28.709	80.728	Government/Samudayek	0.82	3509.36	Carp
208	Janmaitha Tal	Fulbari 8	71_01_01_192	28.707	80.738	Government/Samudayek	0.34	1467.05	Carp
209	Ghorlahawa Tal	Fulbari 1	71_01_01_193	28.740	80.572	Government/Samudayek	12.11	52063.06	Carp
210	Simraiya Tal	Fulbari 7	71_01_01_194	28.695	80.591	Government/Samudayek	1.72	7408.51	Carp
211	Wakthya Tal	Fulbari 8	71_01_01_195	28.707	80.621	Government/Samudayek	0.46	1965.66	Carp
212	Baijriya Tal	Fulbari 7	71_01_01_196	28.705	80.625	Government/Samudayek	0.21	919.20	Carp
213	Ramlaxman	Fulbari 8	71_01_01_197	28.720	80.624	Government/Samudayek	8.88	38167.44	Carp
214	Total water surface area in (Ha) in Fulbari						37.31		

S. No.	Name of the farmer	VDC/Municipality	Code No.	Latitude	Longitude	Ownership	Water surface area(Ha)	perimeter(m)	Culture Sustem
215	Dubi Tal	Gadariya 8	71_01_01_198	28.722	80.619	Government/Samudayek	0.30	1269.40	Carp
216	Puraina Tal	Gadariya 2	71_01_01_199	28.729	80.620	Government/Samudayek	29.30	8789.05	Carp
217	Sukliya Tal	Gardiya 2	71_01_01_200	28.670	80.979	Government/Samudayek	1.31	5638.28	Carp
218	Nathuniya Tal	Gadariya 2	71_01_01_201	28.672	80.977	Government/Samudayek	0.04	172.10	Carp
219	Narang Buba Tal	Gadariya 2	71_01_01_202	28.672	80.977	Government/Samudayek	0.30	1277.70	Carp
220	Kailiya Tal	Gadariya 8	71_01_01_203	28.670	80.975	Government/Samudayek	37.34	3734.44	Carp
221	Jaganiya Tal	Gadariya 9	71_01_01_204	28.670	80.975	Government/Samudayek	2.78	278.24	Carp
222	Katahari Tal	Gadariya 4	71_01_01_205	28.637	80.738	Government/Samudayek	9.02	38764.61	Carp
223	Sheetal Jhadi Tal	Gadariya 1	71_01_01_206	28.662	80.970	Government/Samudayek	0.48	2049.59	Carp
	Total water surface area in (Ha) in Gadariya						80.86		
	Total water surface area in (Ha)						890.16		

Annex: 2

Ponds distribution in KanchaMunicipalityur District

S.No.	Municipality/VDC	Name of Farmer	Code No.	Ownership	Latitude	Longitude	Perimeter(m)	Water surface area(Ha)	Culture System
1	Kalika-9	Gangala Tal	72-01-01-01	Government	28.9471	80.1302	756.18	2.36	Carp
2	Kalika-9	Naini Tal	72-01-01-02	Government	28.9471	80.1300	194.41	0.19	Carp
3	Parasan-9	Kakad Tal	72-01-01-03	Government	28.9468	80.1299	533.78	1.42	Carp
4	Jhalari Pipaladi Municipality	Surakhya Tal	72-01-01-11	Government	28.9459	80.1302	917.93	1.73	Carp
5	Jhalari Pipaladi Municipality-09	Jetendra Rana	72-01-01-169	Personal	28.6715	80.4073	66.35	0.03	Carp
6	Jhalari Pipaladi Municipality-09	Surat Bista	72-01-01-170	Personal	28.6719	80.4072	218.67	0.18	Carp
7	Jhalari Pipaladi Municipality-10	Naini Singh Thakulla	72-01-01-161	Personal	28.6708	80.4052	323.34	0.44	Carp
8	Jhalari Pipaladi Municipality N.P 9	Thamman Bd Kc	72-01-01-288	Personal	28.7808	80.2542	715.67	1.73	Carp
9	Jhalari Pipaladi Municipality N.P -10	Dipak Sahu	72-01-01-289	Personal	28.7810	80.2537	117.15	0.07	Carp
10	Jhalari Pipaladi Municipality N.P -11	Ran Bd Bista	72-01-01-290	Personal	28.7795	80.2531	189.24	0.17	Carp
11	Jhalari Pipaladi Municipality -4	Arjun Nepali	72-01-01-291	Personal	28.7793	80.2538	384.20	0.88	Carp
12	Jhalari Pipaladi Municipality 11	Rajendra Ayer	72-01-01-292	Personal	28.7763	80.2529	188.58	0.20	Carp
13	Jhalari Pipaladi Municipality 11	Deepak Ayer	72-01-01-293	Personal	28.7766	80.2533	81.56	0.04	Carp
14	Jhalari Pipaladi Municipality 11	Bhim Datta Bhat	72-01-01-294	Personal	28.7770	80.2526	643.60	2.72	Carp
15	Jhalari Pipaladi Municipality 12	Kalpana Panta	72-01-01-295	Personal	28.7768	80.2524	571.99	1.46	Carp
16	Jhalari Pipaladi Municipality 13	Ishowari Panta	72-01-01-296	Personal	28.9701	80.2868	396.23	0.57	Carp
17	Jhalari Pipaladi Municipality 7	Himmat Chaudhary	72-01-01-297	Personal	28.7741	80.2487	264.61	0.29	Carp
18	Jhalari Pipaladi Municipality 10	Lal Bd Ayer	72-01-01-298	Personal	28.7745	80.2490	194.96	0.25	Carp
19	Jhalari Pipaladi Municipality 6	Bej Nath Ma B Kasaroul	72-01-01-299	Personal	28.7746	80.2487	112.55	0.07	Carp
20	Jhalari Pipaladi Municipality-01	Bimal Sahu	72-01-01-300	Personal	28.7742	80.2484	133.37	0.10	Carp
21	Jhalari Pipaladi Municipality-02	Baijanath Tal Samudaik Ban	72-01-01-301	Personal	28.6230	80.4599	70.55	0.03	Carp
22	Jhalari Pipaladi Municipality-03	Kul Kumali Chaudhary	72-01-01-302	Personal	28.9706	80.2865	198.24	0.24	Carp
23	Jhalari Pipaladi Municipality-04	Dhana Singh Saud	72-01-01-303	Personal	28.9705	80.2865	666.19	0.98	Carp
24	Jhalari Pipaladi Municipality-05	Chanda Kumari Chaudhary	72-01-01-304	Personal	28.9705	80.2865	355.11	0.81	Carp
25	Jhalari Pipaladi Municipality-06	Om Ayer	72-01-01-305	Personal	28.9702	80.2864	565.37	1.89	Carp
26	Jhalari Pipaladi Municipality-07	Balaram Rana	72-01-01-306	Personal	28.9701	80.2868	366.73	0.71	Carp
27	Jhalari Pipaladi Municipality-08	Surendra Chand	72-01-01-307	Personal	28.9700	80.2870	437.64	0.92	Carp

S.No.	Municipality/VDC	Name of Farmer	Code No.	Ownership	Latitude	Longitude	Perimeter(m)	Water surface area(Ha)	Culture System
28	Jhalari Pipaladi Municipality-09	Swaraswati Ma Bi	72-01-01-308	Personal	28.9702	80.2871	292.77	0.45	Carp
29	Jhalari Pipaladi Municipality-10	Ramesh Thakulla	72-01-01-162	Personal	28.6708	80.4061	200.45	0.16	Carp
30	Jhalari Pipaladi Municipality-10	Ganesh Thakulla	72-01-01-163	Personal	28.6708	80.4065	267.05	0.35	Carp
31	Jhalari Pipaladi Municipality-09	Nrip Sunar	72-01-01-164	Personal	28.6710	80.4068	131.15	0.09	Carp
32	Jhalari Pipaladi Municipality-09	Jag Bd Luhar	72-01-01-165	Personal	28.6711	80.4069	164.87	0.13	Mangur
33	Jhalari Pipaladi Municipality-07	Dependra Prasad Panta	72-01-01-171	Personal	28.6722	80.4072	69.78	0.03	Carp
34	Jhalari Pipaladi Municipality-07	Bhoj Saut	72-01-01-172	Personal	28.6725	80.4069	102.03	0.06	Carp
35	Jhalari Pipaladi Municipality-10	Min Bd Ayer	72-01-01-173	Personal	28.6727	80.4066	165.50	0.16	Carp
36	Jhalari Pipaladi Municipality-11	Tek Bd Bhandari	72-01-01-174	Personal	28.6727	80.4061	173.80	0.13	Carp
37	Jhalari Pipaladi Municipality-11	Dipak Bd Ayer	72-01-01-175	Personal	28.8837	80.3550	292.84	0.15	Carp
38	Jhalari Pipaladi Municipality-11	Jaya Raj Ayer	72-01-01-176	Personal	28.7516	80.2890	149.45	0.10	Carp
39	Jhalari Pipaladi Municipality-11	Prakash Ayer	72-01-01-177	Personal	28.7515	80.2890	715.67	1.73	Carp
40	Jhalari Pipaladi Municipality-11	Basu Dev Bhat	72-01-01-178	Personal	28.7514	80.2891	117.15	0.07	Carp
41	Jhalari Pipaladi Municipality-11	Bhairab Singh Ayer	72-01-01-179	Personal	28.7514	80.2892	189.24	0.17	Carp
42	Jhalari Pipaladi Municipality-07	Jagat Singh	72-01-01-180	Personal	28.7513	80.2894	384.20	0.88	Carp
43	Jhalari Pipaladi Municipality-10	Lal Singh Ayer	72-01-01-181	Personal	28.7513	80.2894	188.58	0.20	Carp
44	Jhalari Pipaladi Municipality-07	Dalba Chaudhary	72-01-01-182	Personal	28.7514	80.2895	81.56	0.04	Carp
45	Jhalari Pipaladi Municipality-07	Deepak Sahu	72-01-01-183	Personal	28.7514	80.2895	643.60	2.72	Carp
46	Jhalari Pipaladi Municipality-01	Puran Rana	72-01-01-184	Personal	28.7516	80.2896	571.99	1.46	Carp
47	Jhalari Pipaladi Municipality-05	Bhagawati Chand	72-01-01-185	Personal	28.7517	80.2895	396.23	0.57	Carp
48	Jhalari Pipaladi Municipality 5	Tapta Singh Thakulla	72-01-01-331	Personal	0.0000	0.0000	643.60	2.72	Carp
49	Jhalari Pipaladi Municipality-04	Birman Dhami	72-01-01-186	Personal	28.7517	80.2891	264.61	0.29	Carp
50	Jhalari Pipaladi Municipality-01	Tek Bd Hamal	72-01-01-187	Personal	28.7517	80.2890	194.96	0.25	Carp
51	Jhalari Pipaladi Municipality	Tara Tal	72-01-01-12	Government	28.9460	80.1305	457.73	1.33	Carp
52	Jhalari Pipaladi Municipality	Kankadi Tal	72-01-01-14	Government	28.9461	80.1314	226.77	0.29	Carp
53	Jhalari Pipaladi Municipality	Purauna Tal	72-01-01-15	Government	28.9464	80.1315	155.44	0.14	Carp
54	Jhalari Pipaladi Municipality	Aagi Gaur Tal	72-01-01-16	Government	28.9467	80.1316	260.60	0.40	Carp
55	Jhalari Pipaladi Municipality	Lwangdwara Tal	72-01-01-17	Government	28.9468	80.1316	106.65	0.07	Carp
56	Jhalari Pipaladi Municipality	Bantariya Tal	72-01-01-18	Government	28.9471	80.1317	234.45	0.34	Carp
57	Jhalari Pipaladi Municipality	Lama Tal	72-01-01-19	Government	28.9473	80.1311	684.40	3.01	Carp
58	Jhalari Pipaladi Municipality	Shova Tal	72-01-01-20	Government	28.9473	80.1307	135.56	0.11	Carp
59	Jhalari Pipaladi Municipality	Banda Tal	72-01-01-21	Government	28.9474	80.1303	128.40	0.10	Carp
60	Jhalari Pipaladi Municipality	Gudariya Tal	72-01-01-22	Government	28.9241	80.2461	152.77	0.14	Carp
61	Jhalari Pipaladi Municipality	Kutaha Tal	72-01-01-23	Government	28.9687	80.1301	77.29	0.04	Carp

S.No.	Municipality/VDC	Name of Farmer	Code No.	Ownership	Latitude	Longitude	Perimeter(m)	Water surface area(Ha)	Culture System
62	Jhalari Pipaladi Municipality	Bedkot Tal	72-01-01-24	Government	28.9687	80.1302	357.07	0.54	Carp
63	Jhalari Pipaladi Municipality	Siddha Sarobar Tal	72-01-01-25	Government	28.9687	80.1304	129.27	0.09	Carp
64	Jhalari Pipaladi Municipality-05	Jhinjharay Tal	72-01-01-42	Government	28.6630	80.4159	83.05	0.04	Carp
65	Jhalari Pipaladi Municipality-03	Makura Tal	72-01-01-35	Government	28.6619	80.4149	136.62	0.10	Carp
66	Jhalari Pipaladi Municipality-06	Purauna Tal Kha	72-01-01-36	Government	28.6620	80.4150	1172.25	2.38	Carp
67	Jhalari Pipaladi Municipality	Matakrani Ta;	72-01-01-30	Government	28.9689	80.1308	122.53	0.06	Carp
68	Jhalari Pipaladi Municipality	Sunadev Tal	72-01-01-31	Government	28.9689	80.1301	1014.81	3.54	Carp
69	Total area(ha) in Jhalari Pipaladi Municipality							40.4052	
70	Dodhara Chandani Municipality	Mahakali Tala	72-01-01-32	Government	28.9688	80.1300	473.25	1.50	Carp
71	Dodhara Chadani Municipality 9	Prem Singh Khadka	72-01-01-278	Personal	28.7783	80.2546	138.29	0.11	Carp
72	Dodhara Chadani Municipality 9	Krishna Pd Joshi Aam Bhoj	72-01-01-279	Personal	28.7785	80.2547	126.50	0.05	Carp
73	Dodhara Chadani Municipality 8	Khadak Bd Magar Bajahadi To	72-01-01-280	Personal	28.7788	80.2548	66.35	0.03	Carp
74	Dodhara Chadani Municipality 9	Prem Bd Bista	72-01-01-281	Personal	28.7791	80.2549	218.67	0.18	Carp
75	Dodhara Chadani Municipality 10	Chandra Bahadur Singh	72-01-01-282	Personal	28.7796	80.2550	69.78	0.03	Carp
76	Dodhara Chadani -10	Chandra Bd Singh	72-01-01-285	Personal	28.7803	80.2549	173.80	0.13	Carp
77	Dodhara Chandani -9	Ramesh Bd Thapa	72-01-01-286	Personal	28.7807	80.2550	292.84	0.15	Carp
78	Dodhara Chandani Municipality	Mahakali Tal	72-01-01-33	Government	28.9286	80.2705	540.97	2.03	Carp
79	Total area(ha) in Dodhara Chandani Municipality							4.2125	
80	Sankarpur-06	Balami Tal	72-01-01-41	Government	28.6621	80.4158	93.00	0.05	Carp
81	Bhimdatta Municipality-02	Bharat Rawal Mulhiya	72-01-01-43	Personal	28.6632	80.4155	289.43	0.47	Carp
82	Bhimdatta Municipality-18	Motilal Bhandari	72-01-01-44	Personal	28.6633	80.4148	242.78	0.38	Carp
83	Bhimdatta Municipality-18	Chandra Singh Maini	72-01-01-45	Personal	28.6629	80.4147	772.06	3.45	Carp
84	Bhimdatta Municipality-19	Tej Bahadur Chand	72-01-01-46	Personal	28.6628	80.4147	484.03	0.91	Carp
85	Bhimdatta Municipality-19	Lachi Chand	72-01-01-47	Personal	28.6624	80.4147	339.16	0.71	Carp
86	Bhimdatta Municipality	Jagat Bd, Chaudhary	72-01-01-48	Personal	28.6621	80.4145	128.19	0.07	Carp
87	Bhimdatta Municipality	Buddi Narayan Chaudhary	72-01-01-49	Personal	28.6620	80.4146	115.76	0.08	Carp
88	Bhimdatta Municipality	Durbari Rana	72-01-01-50	Personal	28.9246	80.2515	527.73	1.27	Carp
89	Bhimdatta Municipality	Ramesh Chaudhary	72-01-01-51	Personal	28.6649	80.4110	676.21	0.72	Carp
90	Bhimdatta Municipality	Kallu Chaudhary	72-01-01-52	Personal	28.6647	80.4114	1762.66	5.96	Carp
91	Bhimdatta Municipality	Hari Dagaura	72-01-01-53	Personal	28.6646	80.4117	446.56	1.24	Carp

S.No.	Municipality/VDC	Name of Farmer	Code No.	Ownership	Latitude	Longitude	Perimeter(m)	Water surface area(Ha)	Culture System
92	Bhimdatta Municipality	Kuwar Chaudhary	72-01-01-54	Personal	28.6649	80.4119	193.07	0.23	Carp
93	Bhimdatta Municipality	Madanlal Chudhary	72-01-01-55	Personal	28.6649	80.4121	1059.29	6.84	Carp
94	Bhimdatta Municipality	Fulchandra Chudhary	72-01-01-56	Personal	28.6650	80.4122	189.59	0.22	Carp
95	Bhimdatta Municipality	Mansa Dagaure	72-01-01-57	Personal	28.6653	80.4118	424.29	0.82	Carp
96	Bhimdatta Municipality	Man Bd. Chaudhary	72-01-01-58	Personal	28.6655	80.4114	166.46	0.20	Carp
97	Bhimdatta Municipality 19	Badri Narayan Chaudhary	72-01-01-332	Personal	28.9685	80.1709	571.99	1.46	Carp
98	Bhimdatta Municipality 1	Ballu Chaudhary	72-01-01-333	Personal	28.9682	80.1712	396.23	0.57	Carp
99	Bhimdatta Municipality 2	Hari Pd Chaudhary	72-01-01-334	Personal	28.9681	80.1712	264.61	0.29	Carp
100	Bhimdatta Municipality 3	Laxman Chaudhary	72-01-01-335	Personal	28.9680	80.1713	194.96	0.25	Carp
101	Bhimdatta Municipality 4	Chandra Bd Chudhary	72-01-01-336	Personal	28.9678	80.1714	112.55	0.07	Carp
102	Bhimdatta Municipality 5	Madan Rana	72-01-01-337	Personal	28.9676	80.1719	133.37	0.10	Carp
103	Bhimdatta Municipality 6	Pasad Chaudhary	72-01-01-338	Personal	28.9676	80.1723	70.55	0.03	Carp
104	Bhimdatta Municipality 7	Shiva Dutta Rana	72-01-01-339	Personal	28.9676	80.1724	198.24	0.24	Carp
105	Bhimdatta Municipality 8	Bhule Rana	72-01-01-340	Personal	28.9676	80.1724	666.19	0.98	Carp
106	Bhimdatta Municipality 9	Bot Rana	72-01-01-341	Personal	28.9676	80.1729	355.11	0.81	Carp
107	Bhimdatta Municipality 3	Chaula Rana	72-01-01-342	Personal	28.9676	80.1730	565.37	1.89	Carp
108	Bhimdatta Municipality 4	Joshi Rana	72-01-01-343	Personal	28.9677	80.1733	366.73	0.71	Carp
109	Bhimdatta Municipality 5	Chet Raj Bhatta	72-01-01-344	Personal	28.9677	80.1733	437.64	0.92	Carp
110	Bhimdatta Municipality 6	Thagi Ayer	72-01-01-345	Personal	28.9678	80.1733	292.77	0.45	Carp
111	Bhimdatta Municipality 7	Sita Ram Rana	72-01-01-346	Personal	28.9681	80.1733	323.34	0.44	Carp
112	Bhimdatta Municipality 19	Farka Bd Chaubhari	72-01-01-311	Personal	28.9705	80.2870	267.05	0.35	Carp
113	Bhimdatta Municipality 02	Prakash Bokati	72-01-01-312	Personal	28.9705	80.2870	131.15	0.09	Carp
114	Bhimdatta Municipality 02	Suman Bokati	72-01-01-313	Personal	28.9706	80.2870	164.87	0.13	Carp
115	Bhimdatta Municipality 02	Prem Bd Ayer	72-01-01-314	Personal	28.9707	80.2870	162.40	0.16	Carp
116	Bhimdatta Municipality 02	Padam Bogati	72-01-01-315	Personal	28.9708	80.2868	138.29	0.11	Carp
117	Bhimdatta Municipality 02	Dammar Karki	72-01-01-316	Personal	28.9709	80.2866	126.50	0.05	Carp
118	Bhimdatta Municipality 02	Srijana Rawal	72-01-01-317	Personal	28.9706	80.2865	66.35	0.03	Carp
119	Bhimdatta Municipality 02	Narendra Raj Bohara	72-01-01-318	Personal	0.0000	0.0000	218.67	0.18	Carp
120	Bhimdatta Municipality 03	Gelu Ram Chaudhary	72-01-01-319	Personal	28.9685	80.2783	69.78	0.03	Carp
121	Bhimdatta Municipality 03	Jamura Rana	72-01-01-320	Personal	28.9685	80.2784	102.03	0.06	Carp
122	Bhimdatta Municipality 03	Khyali Rana	72-01-01-321	Personal	28.9684	80.2786	165.50	0.16	Carp
123	Bhimdatta Municipality 03	Hari Krishna Rana	72-01-01-322	Personal	28.9684	80.2787	173.80	0.13	Carp
124	Bhimdatta Municipality 03	Chetraj Ojha	72-01-01-323	Personal	28.9685	80.2787	292.84	0.15	Carp

S.No.	Municipality/VDC	Name of Farmer	Code No.	Ownership	Latitude	Longitude	Perimeter(m)	Water surface area(Ha)	Culture System
125	Bhimdatta Municipality 03	Manni Chathuri	72-01-01-324	Personal	28.9687	80.2784	149.45	0.10	Carp
126	Bhimdatta Municipality 10	Hira Singh Ayer	72-01-01-325	Personal	28.9686	80.2783	715.67	1.73	Carp
127	Bhimdatta Municipality 10	Chandra Singa Ayer	72-01-01-326	Personal	28.9013	80.2236	117.15	0.07	Carp
128	Bhimdatta Municipality 10	Narendra Dev Bhat	72-01-01-327	Personal	28.8906	80.2459	189.24	0.17	Carp
129	Bhimdatta Municipality 10	Mangar Chanda Rajendra Diyal	72-01-01-328	Personal	28.8911	80.2460	384.20	0.88	Carp
130	Bhimdatta Municipality 10	Dipendra Bhandari	72-01-01-329	Personal	28.8913	80.2455	188.58	0.20	Carp
131	Bhimdatta Municipality 3	Rup Singh Dagaura	72-01-01-330	Personal	28.8907	80.2454	81.56	0.04	Carp
132	Bhimdatta Municipality 8	Srijana Rawal	72-01-01-347	Personal	28.9682	80.1733	200.45	0.16	Carp
133	Bhimdatta Municipality 9	Hira Singha Ayer	72-01-01-348	Personal	28.9682	80.1733	267.05	0.35	Carp
134	Bhimdatta Municipality 10	Chandra Singha Ayer	72-01-01-349	Personal	28.9683	80.1733	131.15	0.09	Carp
135	Bhimdatta Municipality 11	Narendra Raj Bohara	72-01-01-350	Personal	28.9684	80.1732	164.87	0.13	Carp
136	Bhimdatta Municipality 12	Gopal Bhandari	72-01-01-351	Personal	28.9684	80.1732	162.40	0.16	Carp
137	Bhimdatta Municipality 13	Kishan Bhandari	72-01-01-352	Personal	28.9685	80.1732	138.29	0.11	Carp
138	Bhimdatta Municipality 14	Upadesh Singh	72-01-01-353	Personal	28.9686	80.1731	126.50	0.05	Carp
139	Bhimdatta Municipality 15	Naradev Bhatta	72-01-01-354	Personal	28.9686	80.1730	66.35	0.03	Carp
140	Bhimdatta Municipality 16	Dipendra Bhandari	72-01-01-355	Personal	28.9688	80.1728	218.67	0.18	Carp
141	Bhimdatta Municipality 17	Rajendra Diyal	72-01-01-356	Personal	28.9688	80.1728	69.78	0.03	Carp
142	Bhimdatta Municipality	Puran Chaudhary	72-01-01-59	Personal	28.6656	80.4114	268.51	0.45	Mangur
143	Bhimdatta Municipality-19	Tankaraj Uprety	72-01-01-60	Personal	28.6657	80.4113	460.10	1.34	Carp
144	Bhimdatta Municipality-19	Takendra Ayer/ Gangalal	72-01-01-61	Personal	28.6662	80.4115	295.91	0.62	Carp
145	Bhimdatta Municipality-19	Chetraj Bhatta	72-01-01-62	Personal	28.6661	80.4116	238.07	0.35	Carp
146	Bhimdatta Municipality-18	Padam Bd Thapa	72-01-01-63	Personal	28.6662	80.4120	547.80	1.04	Carp
147	Bhimdatta Municipality-02	Narendra Raj Bohora	72-01-01-64	Personal	28.6666	80.4122	260.62	0.45	Carp
148	Bhimdatta Municipality-03	Nirmala Devi	72-01-01-65	Personal	28.6665	80.4125	384.98	0.53	Carp
149	Bhimdatta Municipality-03	Gita Devi	72-01-01-66	Personal	28.6665	80.4125	395.87	0.76	Carp
150	Bhimdatta Municipality-03	Ram Bd Chudhary	72-01-01-67	Personal	28.6667	80.4127	469.28	1.25	Carp
151	Bhimdatta Municipality-03	Prem Bd Khadka	72-01-01-68	Personal	28.6670	80.4129	399.86	0.99	Carp
152	Bhimdatta Municipality-08	Karna Bd. Khadka	72-01-01-69	Personal	28.6668	80.4134	158.08	0.12	Carp
153	Bhimdatta Municipality-08	Nar Bd. Dhanuk	72-01-01-70	Personal	28.6670	80.4135	185.11	0.20	Carp
154	Bhimdatta Municipality-08	Rabindra Bikram Kc	72-01-01-71	Personal	28.6671	80.4135	164.10	0.17	Carp
155	Bhimdatta Municipality-16	Padam Bd Thapa	72-01-01-72	Personal	28.6675	80.4130	191.44	0.15	Carp
156	Bhimdatta Municipality-15	Daulat Singh Bhandari	72-01-01-73	Personal	28.6677	80.4127	144.88	0.11	Carp
157	Bhimdatta Municipality-06	Karan Chand	72-01-01-74	Personal	28.6678	80.4125	172.31	0.18	Carp

S.No.	Municipality/VDC	Name of Farmer	Code No.	Ownership	Latitude	Longitude	Perimeter(m)	Water surface area(Ha)	Culture System
158	Bhimdatta Municipality-06	Megha Rana	72-01-01-75	Personal	28.6680	80.4120	441.77	0.72	Carp
159	Bhimdatta Municipality-15	Dependra Bhandari	72-01-01-76	Personal	28.6680	80.4120	482.49	1.22	Carp
160	Total area(ha) in Bhimdatta Municipality							49.5481	
161	Bedkot	Lal Bd. Dagaura	72-01-01-77	Personal	28.6679	80.4119	335.65	0.60	Carp
162	Bedkot 13	Prakash Bd. Dagauri	72-01-01-78	Personal	28.6679	80.4118	398.69	0.63	Carp
163	Bedkot Municipality	Saulu Gadi Tal	72-01-01-29	Government	28.9688	80.1308	240.35	0.28	Carp
164	Bedkot 13	Tej Bd. Dagauri	72-01-01-79	Personal	28.6673	80.4116	420.75	0.98	Carp
165	Bedkot 13	Bir Bd. Dagauri	72-01-01-80	Personal	28.6670	80.4113	252.18	0.39	Carp
166	Bedkot	Raju Dagauri	72-01-01-81	Personal	28.6670	80.4109	637.49	1.20	Carp
167	Bedkot	Sita Devi Dagari	72-01-01-82	Personal	28.6669	80.4106	355.40	0.79	Carp
168	Bedkot	Sher Bd Dagauri	72-01-01-83	Personal	28.6668	80.4107	272.36	0.44	Carp
169	Bedkot	Dal Bd Rana	72-01-01-84	Personal	28.6663	80.4111	452.93	1.27	Carp
170	Bedkot	Kamal Dagaura	72-01-01-85	Personal	28.6651	80.4105	289.90	0.37	Carp
171	Bedkot	Laptan Rana	72-01-01-86	Personal	28.6650	80.4108	328.09	0.46	Carp
172	Bedkot	Tin Khande Tal	72-01-01-08	Government	28.9452	80.1298	451.87	1.36	Carp
173	Bedkot	Nursury Tal 'A'	72-01-01-09	Government	28.9452	80.1298	731.80	3.46	Carp
174	Bedkot Municipality	Rani Tal	72-01-01-28	Government	28.9687	80.1308	205.75	0.18	Carp
175	Bedkot	Nursury Tal 'B'	72-01-01-10	Government	28.9456	80.1300	166.91	0.19	Carp
176	Bedkot	Burani Dagaura	72-01-01-87	Personal	28.9246	80.2462	568.17	1.37	Carp
177	Bedkot	Gagan Dagaura	72-01-01-88	Personal	28.6642	80.4116	444.02	1.03	Carp
178	Bedkot-05	Lokendra Singha	72-01-01-89	Personal	28.6646	80.4118	244.40	0.37	Carp
179	Bedkot-06	Laxmi Bista	72-01-01-90	Personal	28.6647	80.4114	667.34	2.59	Carp
180	Bedkot-07	Ganesh Bista	72-01-01-91	Personal	28.6649	80.4111	333.69	0.51	Carp
181	Bedkot-08	Haris Sethi	72-01-01-92	Personal	28.6650	80.4107	999.66	3.24	Carp
182	Bedkot-09	Prem Singh Bista	72-01-01-93	Personal	28.6648	80.4107	765.02	2.11	Carp
183	Bedkot-10	Pradeshu Dagaura	72-01-01-94	Personal	28.6647	80.4109	355.51	0.66	Carp
184	Bedkot-07	Bipata Chudhary	72-01-01-95	Personal	28.6642	80.4106	470.57	0.88	Carp
185	Bedkot-07	Buddiram Dagaura	72-01-01-96	Personal	28.6639	80.4110	398.37	0.97	Carp
186	Bedkot	Bambi Dagaura	72-01-01-97	Personal	28.6638	80.4113	291.59	0.51	Carp
187	Bedkot	Bandhuras Dagaura	72-01-01-98	Personal	28.9201	80.2451	399.57	0.71	Carp
188	Bedkot	Ramparsad Dagaura	72-01-01-99	Personal	28.6647	80.4108	450.57	1.20	Carp
189	Bedkot-07	Suman Malla	72-01-01-100	Personal	28.6648	80.4106	221.92	0.30	Carp
190	Bedkot-08	Dhirendra Dagaura	72-01-01-101	Personal	28.6650	80.4107	1723.46	13.24	Carp
191	Bedkot-09	Ram Bd Dagaura	72-01-01-102	Personal	28.6651	80.4104	817.59	2.25	Carp

S.No.	Municipality/VDC	Name of Farmer	Code No.	Ownership	Latitude	Longitude	Perimeter(m)	Water surface area(Ha)	Culture System
192	Bedkot-10	Bir Bd.Dagaura	72-01-01-103	Personal	28.6652	80.4101	975.33	2.58	Mangur
193	Bedkot-07	Jog Ram Dagaura	72-01-01-104	Personal	28.6653	80.4099	716.45	3.30	Carp
194	Bedkot-07	Rambharose Rana	72-01-01-105	Personal	28.6654	80.4095	967.48	5.84	Carp
195	Bedkot-08	Mohan Rana	72-01-01-106	Personal	28.6656	80.4090	425.92	1.20	Carp
196	Bedkot Municipality	Banda Tal	72-01-01-27	Government	28.9687	80.1308	82.24	0.04	Mangur
197	Bedkot-09	Suresh Rokaya	72-01-01-107	Personal	28.6656	80.4089	608.51	2.59	Carp
198	Bedkot-10	Bharat Rokaya	72-01-01-108	Personal	28.6653	80.4087	939.92	4.25	Carp
199	Bedkot-09	Daya Ram Rana	72-01-01-109	Personal	28.6650	80.4087	643.60	2.72	Carp
200	Bedkot-10	Ck Singh	72-01-01-110	Personal	28.6650	80.4090	571.99	1.46	Carp
201	Bedkot-11	Madhu Singh	72-01-01-111	Personal	28.6648	80.4089	396.23	0.57	Carp
202	Bedkot-09	Dev Raj Pandey	72-01-01-112	Personal	28.6646	80.4088	264.61	0.29	Carp
203	Bedkot-09	Tirtha Raj Pandey	72-01-01-113	Personal	28.6645	80.4088	194.96	0.25	Carp
204	Bedkot-09	Puran Singh	72-01-01-114	Personal	28.6643	80.4106	112.55	0.07	Carp
205	Bedkot-09	Tek Prasad Pandey	72-01-01-115	Personal	28.7906	80.3655	133.37	0.10	Carp
206	Bedkot	Prakash Thapa	72-01-01-116	Personal	28.6651	80.4069	70.55	0.03	Carp
207	Bedkot	Gopal Singh	72-01-01-117	Personal	28.6649	80.4069	198.24	0.24	Carp
208	Bedkot	Min Bd Dagaura	72-01-01-118	Personal	28.6646	80.4070	666.19	0.98	Carp
209	Bedkot	Ram Pd Rana	72-01-01-119	Personal	28.6645	80.4073	355.11	0.81	Carp
210	Bedkot	Nirmala Dharmi	72-01-01-120	Personal	28.6646	80.4075	565.37	1.89	Carp
211	Bedkot	Asanidhar Bd. Bohara	72-01-01-121	Personal	28.6646	80.4079	366.73	0.71	Carp
212	Bedkot	Basmati Rana	72-01-01-122	Personal	28.6646	80.4083	437.64	0.92	Carp
213	Bedkot	Arjun Chand	72-01-01-123	Personal	28.6646	80.4085	292.77	0.45	Carp
214	Bedkot	Dipika Chudhary	72-01-01-124	Personal	28.6645	80.4085	323.34	0.44	Carp
215	Bedkot	Lokendra Singha	72-01-01-125	Personal	28.6645	80.4087	200.45	0.16	Carp
216	Bedkot	Laxmi Bista	72-01-01-126	Personal	28.6647	80.4089	267.05	0.35	Carp
217	Bedkot	Ganesh Bista	72-01-01-127	Personal	28.6649	80.4089	131.15	0.09	Carp
218	Bedkot	Haris Sethi	72-01-01-128	Personal	28.6649	80.4086	164.87	0.13	Carp
219	Bedkot 10	Arjun Chanda	72-01-01-373	Personal	28.9425	80.1914	112.55	0.07	Carp
220	Bedko T 7	Rajib Sharmakekhak	72-01-01-374	Personal	28.9425	80.1914	133.37	0.10	Carp
221	Bedkot 7	Indra Dev Bhat	72-01-01-375	Personal	28.9426	80.1916	70.55	0.03	Carp
222	Bedkot	Prem Singha Bista	72-01-01-129	Personal	28.6650	80.4086	162.40	0.16	Carp
223	Bedkot	Pradeshu Dagaura	72-01-01-130	Personal	28.6651	80.4082	138.29	0.11	Carp
224	Bedkot	Bipata Chudhary	72-01-01-131	Personal	28.6651	80.4078	126.50	0.05	Carp
225	Bedkot	Buddhiram Dagaura	72-01-01-132	Personal	28.6652	80.4075	66.35	0.03	Carp

S.No.	Municipality/VDC	Name of Farmer	Code No.	Ownership	Latitude	Longitude	Perimeter(m)	Water surface area(Ha)	Culture System
226	Bedkot	Bambi Dagaura	72-01-01-133	Personal	28.6654	80.4074	218.67	0.18	Carp
227	Bedkot	Bandhuraam Dagaura	72-01-01-134	Personal	28.6656	80.4074	69.78	0.03	Carp
228	Bedkot	Suresh Dagaura	72-01-01-135	Personal	28.6656	80.4073	102.03	0.06	Carp
229	Bedkot	Hariram Dagaura	72-01-01-136	Personal	28.6656	80.4071	165.50	0.16	Carp
230	Bedkot	Ramprasad Rana	72-01-01-137	Personal	28.6656	80.4070	173.80	0.13	Carp
231	Bedkot	Saheb Rana	72-01-01-138	Personal	28.6655	80.4069	292.84	0.15	Carp
232	Bedkot	Fatti Rana	72-01-01-139	Personal	28.6655	80.4068	149.45	0.10	Carp
233	Bedkot	Daya Kc	72-01-01-140	Personal	28.6654	80.4068	715.67	1.73	Carp
234	Bedkot	Anil Dhami	72-01-01-141	Personal	28.9381	80.1942	117.15	0.07	Carp
235	Bedkot	Talak Singha Bhat	72-01-01-142	Personal	28.6682	80.4058	189.24	0.17	Carp
236	Bedkot	Man Bd. Saud	72-01-01-143	Personal	28.6680	80.4063	384.20	0.88	Carp
237	Bedkot-10	Madan Rana	72-01-01-144	Personal	28.6681	80.4064	188.58	0.20	Carp
238	Bedkot	Jit Bahadur Chaudhary	72-01-01-145	Personal	28.6684	80.4066	81.56	0.04	Carp
239	Bedkot-10	Tula Ram Sahu	72-01-01-146	Personal	28.6684	80.4066	643.60	2.72	Carp
240	Bedkot-10	Narayan Rana	72-01-01-147	Personal	28.6688	80.4068	571.99	1.46	Carp
241	Bedkot-10	Bhajura Rana	72-01-01-148	Personal	28.6689	80.4068	396.23	0.57	Carp
242	Bedkot-01	Dan Bd Ayer	72-01-01-149	Personal	28.6691	80.4069	264.61	0.29	Carp
243	Bedkot-02	Dilip Bhat	72-01-01-150	Personal	28.6692	80.4066	194.96	0.25	Carp
244	Bedkot-03	Prakash Singh	72-01-01-151	Personal	28.6693	80.4060	112.55	0.07	Carp
245	Bedkot-04	Bikki Bhandari	72-01-01-152	Personal	28.6693	80.4058	133.37	0.10	Carp
246	Bedkot-05	Bhalu Ram Rana	72-01-01-153	Personal	28.6687	80.4055	70.55	0.03	Carp
247	Bedkot-06	Sudiram Dagaura	72-01-01-154	Personal	28.6683	80.4054	198.24	0.24	Carp
248	Bedkot-07	Man Bd Dagaura	72-01-01-155	Personal	28.9519	80.2011	666.19	0.98	Carp
249	Bedkot-08	Buddi Ram Dagaura	72-01-01-156	Personal	28.6727	80.4061	355.11	0.81	Carp
250	Bedkot-09	Narendra Bohora	72-01-01-157	Personal	28.6720	80.4056	565.37	1.89	Carp
251	Bedkot-10	Karan Singh Saud	72-01-01-158	Personal	28.6714	80.4052	366.73	0.71	Carp
252	Bedkot-11	Jit Bahadur Chaudhary	72-01-01-159	Personal	28.6714	80.4052	437.64	0.92	Carp
253	Bedkot-10	Tularam Chudhary	72-01-01-160	Personal	28.6711	80.4051	292.77	0.45	Carp
254	Bedkot	Baij Nath Machha Palan Samuha	72-01-01-167	Personal	28.6711	80.4074	138.29	0.11	Carp
255	Bedkot	Bal Ram Rana	72-01-01-168	Personal	28.6714	80.4074	126.50	0.05	Carp
256	Bedkot-03	Amar Bd Singh	72-01-01-188	Personal	28.9387	80.2749	112.55	0.07	Carp
257	Bedkot-02	Dilip Swar	72-01-01-189	Personal	28.7687	80.2677	133.37	0.10	Carp
258	Bedkot-02	Prem Ballab Bhatta	72-01-01-190	Personal	28.7689	80.2677	70.55	0.03	Carp

S.No.	Municipality/VDC	Name of Farmer	Code No.	Ownership	Latitude	Longitude	Perimeter(m)	Water surface area(Ha)	Culture System
259	Bedkot-01	Sudarsan Bam	72-01-01-191	Personal	28.7690	80.2675	198.24	0.24	Carp
260	Bedkot-01	Ram Bd Bohora	72-01-01-192	Personal	28.7691	80.2673	666.19	0.98	Carp
261	Bedkot-01	Hari Das Joshi	72-01-01-193	Personal	28.7691	80.2672	355.11	0.81	Carp
262	Bedkot-01	Paltu Dagaure	72-01-01-194	Personal	28.7692	80.2671	565.37	1.89	Carp
263	Total area(ha) in Bedkot							97.2396	
264	Belaure-01	Bunana Chaudhary	72-01-01-195	Personal	28.7693	80.2670	366.73	0.71	Carp
265	Belaure-01	Aasa Ram Chaudhary	72-01-01-196	Personal	28.7694	80.2670	437.64	0.92	Carp
266	Belaure-01	Ram Kishan Chudhary	72-01-01-197	Personal	28.7695	80.2669	292.77	0.45	Carp
267	Belaure-01	Dhana Bd Chudhary	72-01-01-198	Personal	28.7697	80.2668	323.34	0.44	Carp
268	Belaure-01	Ful Ram Chaudhary	72-01-01-199	Personal	28.7699	80.2668	200.45	0.16	Carp
269	Belaure-07	Bantariya Machha Palan Samuha	72-01-01-200	Personal	28.7699	80.2668	267.05	0.35	Carp
270	Belaure-07	Sobha Tal Machha Palan Samuhga	72-01-01-201	Personal	28.7700	80.2669	131.15	0.09	Carp
271	Belaure-10	Dan Bd Pandey	72-01-01-204	Personal	28.7703	80.2673	138.29	0.11	Carp
272	Belaure-09	Sambhu Rana	72-01-01-205	Personal	28.7703	80.2673	126.50	0.05	Carp
273	Belaure-09	Palta Chudhary	72-01-01-206	Personal	28.7703	80.2676	66.35	0.03	Carp
274	Belaure-10	Bal Bahadur Pandey	72-01-01-207	Personal	28.7702	80.2681	218.67	0.18	Carp
275	Belaure-01	Banda Tal	72-01-01-13	Government	28.9461	80.1310	856.97	3.68	Carp
276	Belaure-4	Ramlal Rana	72-01-01-263	Personal	28.7639	80.2725	133.37	0.10	Carp
277	Belaure-2	Soba Ran Bhaisori	72-01-01-264	Personal	28.7639	80.2724	70.55	0.03	Carp
278	Belaure-3	Yama Bd Chettri	72-01-01-265	Personal	28.7638	80.2724	198.24	0.24	Carp
279	Belaure-4	Prem Singh Rana	72-01-01-266	Personal	28.7638	80.2724	666.19	0.98	Carp
280	Belaure-5	Raghunath Rana Khiriya	72-01-01-267	Personal	28.7636	80.2725	355.11	0.81	Carp
281	Belaure-6	Bandhu Ram Chudhary	72-01-01-268	Personal	28.7635	80.2726	565.37	1.89	Carp
282	Belaure-11	Dip Jyoti Krishak Machha Palan	72-01-01-208	Personal	28.7702	80.2682	69.78	0.03	Carp
283	Belaure-14	Som Lal Chudhary	72-01-01-209	Personal	28.7701	80.2684	102.03	0.06	Carp
284	Belaure-13	Sidheshowr Machha Palan	72-01-01-210	Personal	28.7701	80.2684	165.50	0.16	Carp
285	Belaure-14	Lal Bd Sahi	72-01-01-211	Personal	28.7700	80.2686	173.80	0.13	Carp
286	Belaure-03	Dipendra Budhathoki	72-01-01-212	Personal	28.7700	80.2687	292.84	0.15	Carp
287	Belaure Municipality-05	Syali Nala	72-01-01-37	Government	28.6622	80.4151	280.99	0.50	Carp
288	Belaure Municipality	Kalikiya Tal	72-01-01-38	Government	28.6623	80.4151	192.55	0.18	Carp

S.No.	Municipality/VDC	Name of Farmer	Code No.	Ownership	Latitude	Longitude	Perimeter(m)	Water surface area(Ha)	Culture System
289	Belaury Municipality	Chariya Kunda Tal	72-01-01-39	Government	28.6622	80.4154	197.03	0.20	Carp
290	Belaury-14	Tharu Kalyan Kari Machha Palan	72-01-01-213	Personal	28.7701	80.2687	149.45	0.10	Carp
291	Belaury-13	Bir Bd Chaudhary	72-01-01-214	Personal	28.7703	80.2687	715.67	1.73	Carp
292	Belaury Municipality	Purauna Tal	72-01-01-26	Government	28.9687	80.1306	280.59	0.49	Carp
293	Belaury-11	Srijanshil Machha Kalayankari	72-01-01-215	Personal	28.7703	80.2687	117.15	0.07	Carp
294	Total area(ha) in Belaury							15.0167	
295	Beldadi-05	Ammar Rana Tharu	72-01-01-216	Personal	28.7704	80.2686	189.24	0.17	Carp
296	Beldadi-6	Markhapta Tal	72-01-01-04	Government	28.9467	80.1300	1268.73	4.21	Carp
297	Beldadi	Chawali Tal	72-01-01-06	Government	28.9455	80.1296	634.68	2.08	Carp
298	Beldadi	Kullaha Tal	72-01-01-07	Government	28.9453	80.1296	586.34	1.44	Carp
299	Beldadi-06	Kluwa Rana	72-01-01-217	Personal	28.7704	80.2685	384.20	0.88	Carp
300	Beldadi-07	Paulad Rana	72-01-01-218	Personal	28.7705	80.2683	188.58	0.20	Carp
301	Beldadi-08	Lal Bd Chaudhary	72-01-01-219	Personal	28.7705	80.2683	81.56	0.04	Carp
302	Beldadi-09	Min Bd Kathyat	72-01-01-220	Personal	28.7706	80.2681	643.60	2.72	Carp
303	Beldadi-05	Lalu Giri	72-01-01-221	Personal	28.7707	80.2679	571.99	1.46	Carp
304	Beldadi-06	Bir Bd Bista	72-01-01-222	Personal	28.7707	80.2675	396.23	0.57	Carp
305	Beldadi-07	Krishna Bista	72-01-01-223	Personal	28.7707	80.2672	264.61	0.29	Carp
306	Beldadi-08	Bala Ram Rana	72-01-01-224	Personal	28.7706	80.2669	194.96	0.25	Carp
307	Beldadi-09	Dayalu Rana	72-01-01-225	Personal	28.7704	80.2666	112.55	0.07	Carp
308	Beldadi-06	Bharosa Rana	72-01-01-226	Personal	28.7701	80.2664	133.37	0.10	Carp
309	Beldadi-07	Bhalua Rana	72-01-01-227	Personal	28.7699	80.2664	70.55	0.03	Carp
310	Beldadi-08	Khadak Thapa	72-01-01-228	Personal	28.7696	80.2664	198.24	0.24	Carp
311	Total area(ha) in Beldadi							14.7506	
312	Krishnapur-01	Jagadis Panta	72-01-01-229	Personal	28.7693	80.2666	666.19	0.98	Carp
313	Krishnapur-02	Ram Bd Mahata Domilla	72-01-01-230	Personal	28.7691	80.2667	355.11	0.81	Carp
314	Krishnapur-03	Tul Bd Budha	72-01-01-231	Personal	28.7689	80.2669	565.37	1.89	Carp
315	Krishnapur-04	Jit Bd Chaudhary	72-01-01-232	Personal	28.7688	80.2671	366.73	0.71	Carp
316	Krishnapur-03	Bir Bd Sahi	72-01-01-233	Personal	28.7687	80.2672	437.64	0.92	Carp
317	Krishnapur-01	Min Bhandari	72-01-01-234	Personal	28.7686	80.2676	292.77	0.45	Carp
318	Krishnapur-02	Dan Bd Saud	72-01-01-235	Personal	28.6535	80.3598	323.34	0.44	Carp
319	Krishnapur-03	Kamman Singh Chaudhary	72-01-01-236	Personal	28.7636	80.2728	200.45	0.16	Carp

S.No.	Municipality/VDC	Name of Farmer	Code No.	Ownership	Latitude	Longitude	Perimeter(m)	Water surface area(Ha)	Culture System
320	Krishnapur Municipality	Shant Ma Bi Tal	72-01-01-34	Government	28.6618	80.4148	977.38	4.41	Carp
321	Krishnapur-04	Manis Chudhary	72-01-01-237	Personal	28.7634	80.2729	267.05	0.35	Carp
322	Krishnapur-05	Brinda Rana	72-01-01-238	Personal	28.7634	80.2729	131.15	0.09	Carp
323	Krishnapur-06	Deb Raj Pathak	72-01-01-239	Personal	28.7632	80.2732	164.87	0.13	Carp
324	Krishnapur-02	Hem Raj Ojha	72-01-01-240	Personal	28.7632	80.2732	162.40	0.16	Carp
325	Krishnapur-03	Jaya Bd Sahi	72-01-01-241	Personal	28.7630	80.2735	138.29	0.11	Carp
326	Krishnapur-04	Gadabijula Surendra Bam	72-01-01-242	Personal	28.7630	80.2735	126.50	0.05	Carp
327	Krishnapur-05	Jana Hit Mahakali Samuha	72-01-01-243	Personal	28.7632	80.2737	66.35	0.03	Carp
328	Krishnapur-06	Gabansi Samudaik	72-01-01-244	Personal	28.7636	80.2739	218.67	0.18	Carp
329	Krishnapur-07	Tanka Pd Joshi	72-01-01-245	Personal	28.7636	80.2739	69.78	0.03	Carp
330	Krishnapur-05	Ama Samuha Badi 2	72-01-01-246	Personal	28.7638	80.2739	102.03	0.06	Carp
331	Krishnapur-06	Shila Rana	72-01-01-247	Personal	28.7638	80.2739	165.50	0.16	Carp
332	Total area(ha) in Krishnapur							12.1279	
333	Raukbar-09	Janaki Samudaik Ban	72-01-01-248	Personal	28.7638	80.2739	173.80	0.13	Carp
334	Raukbar-01	Swaraswati Aadharbut Bidhyalaya	72-01-01-249	Personal	28.7640	80.2738	292.84	0.15	Carp
335	Raukbar-02	Banadevi Samudaik Ban	72-01-01-250	Personal	28.7641	80.2736	149.45	0.10	Carp
336	Raukbar-03	Gaura Devi Samudaik Ban	72-01-01-251	Personal	28.7641	80.2735	715.67	1.73	Carp
337	Raukbar-04	Sher Bd Singh	72-01-01-252	Personal	28.7642	80.2734	117.15	0.07	Carp
338	Raukbar-05	Suresh Pandey	72-01-01-253	Personal	28.7642	80.2731	189.24	0.17	Carp
339	Raukwar 7	Padam Sunar	72-01-01-366	Personal	28.9445	80.1847	188.58	0.20	Carp
340	Raukwar 3	Chet Raj Ojha	72-01-01-367	Personal	28.9446	80.1849	81.56	0.04	Carp
341	Raukwar 4	Man Bd. Bhat	72-01-01-368	Personal	28.9447	80.1850	643.60	2.72	Mangur
342	Raukwar 8	Bal Dev Baliyar	72-01-01-369	Personal	28.9448	80.1851	571.99	1.46	Carp
343	Raukwar 9	Chandra Kanta Awasti	72-01-01-370	Personal	28.9449	80.1850	396.23	0.57	Carp
344	Raukwar 8	Suresh Balayar	72-01-01-371	Personal	28.9447	80.1846	264.61	0.29	Carp
345	Raukwar 04	Gadaiya Tal	72-01-01-40	Government	28.6621	80.4157	72.27	0.04	Carp
346	Raukbar-06	Prem Baniya	72-01-01-254	Personal	28.7642	80.2730	384.20	0.88	Carp
347	Raukbar-07	Hari Rawal	72-01-01-255	Personal	28.7642	80.2730	188.58	0.20	Carp
348	Raukbar-08	Nawaraj Tamang	72-01-01-256	Personal	28.7643	80.2729	81.56	0.04	Carp
349	Total area(ha) in Raukbar							8.7948	

S.No.	Municipality/VDC	Name of Farmer	Code No.	Ownership	Latitude	Longitude	Perimeter(m)	Water surface area(Ha)	Culture System
350	Shankarpur-6	Dev Bd Caudhary	72-01-01-257	Personal	28.7643	80.2727	643.60	2.72	Carp
351	Shankarpur-7	Duda Raba	72-01-01-258	Personal	28.7642	80.2726	571.99	1.46	Carp
352	Sahankarpur-4	Ramdin Rana Kwaswa	72-01-01-259	Personal	28.7641	80.2725	396.23	0.57	Carp
353	Sahankarpur-5	Rajesh Rana	72-01-01-260	Personal	28.7640	80.2725	264.61	0.29	Carp
354	Sahankarpur-5	Aamar Singh Rana	72-01-01-261	Personal	28.7640	80.2725	194.96	0.25	Carp
355	Sahankarpur-4	Helendra Rana	72-01-01-262	Personal	28.7640	80.2725	112.55	0.07	Carp
356	Total area(ha) in Sahankarpur							5.3528	
357	Punarbhas -10	Indra Bd Bk	72-01-01-269	Personal	0.0000	0.0000	366.73	0.71	Carp
358	Punarbhas-10	Dam Bd Sahi	72-01-01-270	Personal	28.7794	80.2535	437.64	0.92	Carp
359	Punarbhas-14	Fairu Tamang Ram Basti	72-01-01-271	Personal	28.7793	80.2538	292.77	0.45	Carp
360	Punarbhas-01	Bharat Malla	72-01-01-272	Personal	28.7793	80.2539	323.34	0.44	Carp
361	Punarbhas-01	Sher Bd Pandey	72-01-01-273	Personal	28.7790	80.2538	200.45	0.16	Carp
362	Punarbhas 10	Prem Jaga Rokaya	72-01-01-274	Personal	28.7786	80.2536	267.05	0.35	Carp
363	Punarbhas 14	Bhajjan Rana	72-01-01-309	Personal	28.9704	80.2870	323.34	0.44	Carp
364	Punarbhas 15	Gagan Bohora	72-01-01-310	Personal	28.9704	80.2870	200.45	0.16	Carp
365	Punarbhas 1	Ishowr Buda Hariyali Samuha	72-01-01-275	Personal	28.7785	80.2536	131.15	0.09	Mangur
366	Punarbhas 2	Brij Lal Rana Kankad	72-01-01-276	Personal	28.7784	80.2541	164.87	0.13	Carp
367	Punarbhas 3	Dashath Sharma	72-01-01-277	Personal	28.7784	80.2544	162.40	0.16	Carp
368	Total area(ha) in Punarbhas							4.0147	
369	Dekhatbhuli 6	Rijit Rana	72-01-01-283	Personal	28.7802	80.2551	102.03	0.06	Carp
370	Dekhatbhuli 6	Kebal Rana	72-01-01-284	Personal	28.7803	80.2549	165.50	0.16	Carp
371	Dekhatbhuli 6	Suliva Rana	72-01-01-357	Personal	28.9689	80.1727	102.03	0.06	Carp
372	Dekhatbhuli 6	Kebal Rana	72-01-01-358	Personal	28.9690	80.1721	165.50	0.16	Carp
373	Dekhatbhuli 6	Sabin Ran A	72-01-01-359	Personal	28.9690	80.1721	173.80	0.13	Carp
374	Dekhatbhuli 3	Jamura Rana	72-01-01-360	Personal	28.9690	80.1716	292.84	0.15	Carp
375	Dekhatbhuli 3	Khyali Rana	72-01-01-361	Personal	28.9690	80.1713	149.45	0.10	Carp
376	Dekhatbhuli 3	Hari Krishna Rana	72-01-01-362	Personal	28.9689	80.1709	715.67	1.73	Carp
377	Dekhatbhuli 4	Prakash Rana	72-01-01-363	Personal	28.9688	80.1707	117.15	0.07	Carp
378	Dekhatbhuli 9	Sita Ram Chaudhary	72-01-01-364	Personal	28.9376	80.1941	189.24	0.17	Carp
379	Dekhatbhuli 8	Prakash Bhatta	72-01-01-365	Personal	28.9446	80.1847	384.20	0.88	Carp
380	Dekhatbhuli-01	Tiram Chaudhary	72-01-01-202	Personal	28.7701	80.2669	164.87	0.13	Carp
381	Dekhatbhuli-07	Janaku Chaudhary	72-01-01-203	Personal	28.7702	80.2671	162.40	0.16	Carp
382	Total area(ha) in Dekhatbhuli							3.9594	

S.No.	Municipality/VDC	Name of Farmer	Code No.	Ownership	Latitude	Longitude	Perimeter(m)	Water surface area(Ha)	Culture System
383	Daigi-01	Kamal ful Tal	72-01-01-05	Government	28.9461	80.1298	417.93	0.89	Carp
384	Daigi	Aasa Machha Palan Samuha	72-01-01-166	Personal	28.6710	80.4072	162.40	0.16	Carp
385	Chakki Bajar	Gangotri Sethi	72-01-01-287	Personal	28.7807	80.2547	149.45	0.10	Carp
386	Jhapi Municipality 1	Rishi Ram Kharel & Chudamadi Panta	72-01-01-372	Personal	28.9377	80.1939	194.96	0.25	Carp
387	Jhapi Municipality 1	Chuda Madi Panta	72-01-01-376	Personal	28.9429	80.1915	198.24	0.24	Carp
Total Area								262.81	